

**NOTTINGHAM CITY COUNCIL DIRECTION  
ON LEAD BY PUBLIC SPACES PROTECTION ORDER 2016  
(ANTI-SOCIAL BEHAVIOUR, CRIME AND POLICING ACT 2014,  
CHAPTER 2, SECTION 59 – 75)**



1. Nottingham City Council, being satisfied that although dogs should be permitted to have access to land where they can be exercised off lead dogs permitted off lead in the Restricted Area may cause damage to property nuisance annoyance or disturbance to persons or the worrying or disturbance of other dogs or other animals or birds which has or is likely to have a detrimental effect on the quality of life of those in the locality, hereby makes the following Order

2. In this Order:-

The Authority	means Nottingham City Council
Authorised Officer of the Authority	means an employee of the Authority who is authorised in writing by the Authority for the purpose of giving directions under this Order
Person in Charge	means the person who has the dog in his possession, care or company at the time the Relevant Offence is committed, or if none, the owner or person who habitually has the dog in his possession
Relevant Offence	an offence under Article 4 of this Order
Restricted Area	means the land designated in the Schedule to this Order

3. This Order comes into force on 26 September 2016 and remains in effect for a period of three years from that date

**Offence**

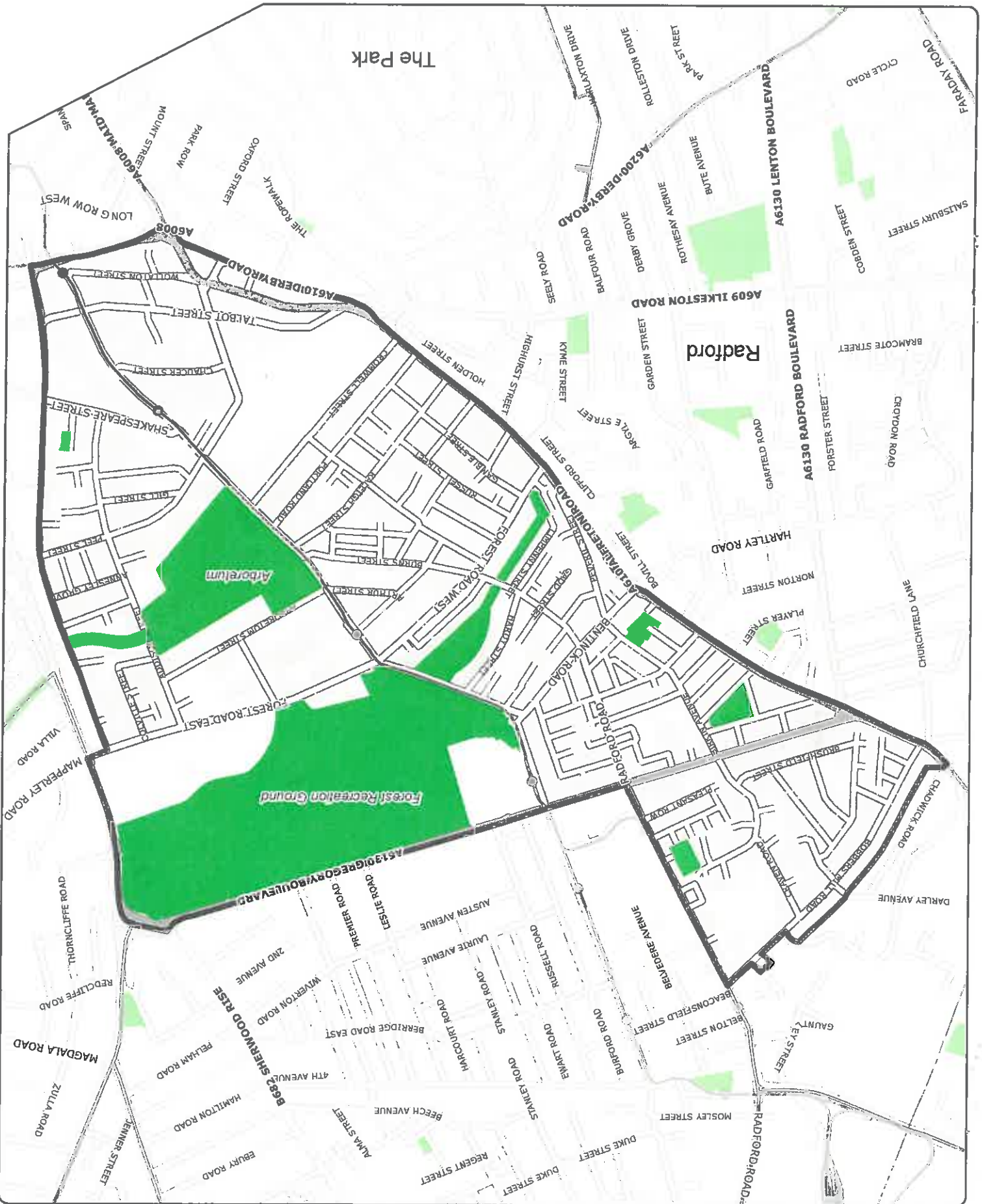
4. (1) A Person in Charge of a dog shall be guilty of an offence if, at any time, on any land in the Restricted Area, he does not comply with a direction given him by an Authorised Officer of the Authority to put and keep the dog on a lead, unless;

a) he has a reasonable excuse for failing to do so; or

# NCC's Public Spaces Protection Orders in Respect of Dogs

Plan 2

## Arboretum Ward



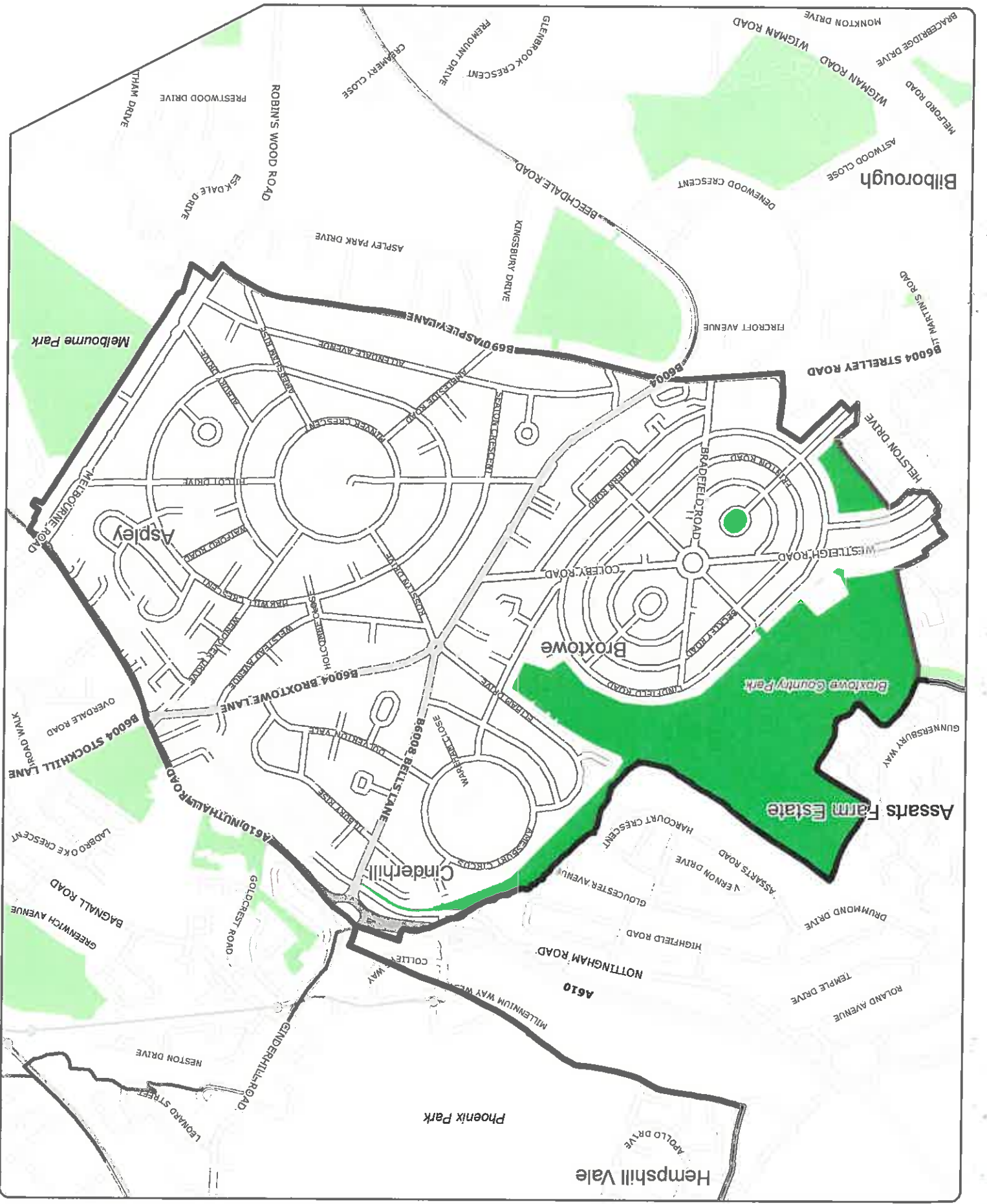
© Crown copyright and database right 2016. Ordnance Survey Licence number 100019317. GIS Team 1/8/2016



**Key**

- City Boundary
- Dogs on leads by direction
- Wards

Dogs on leads by direction

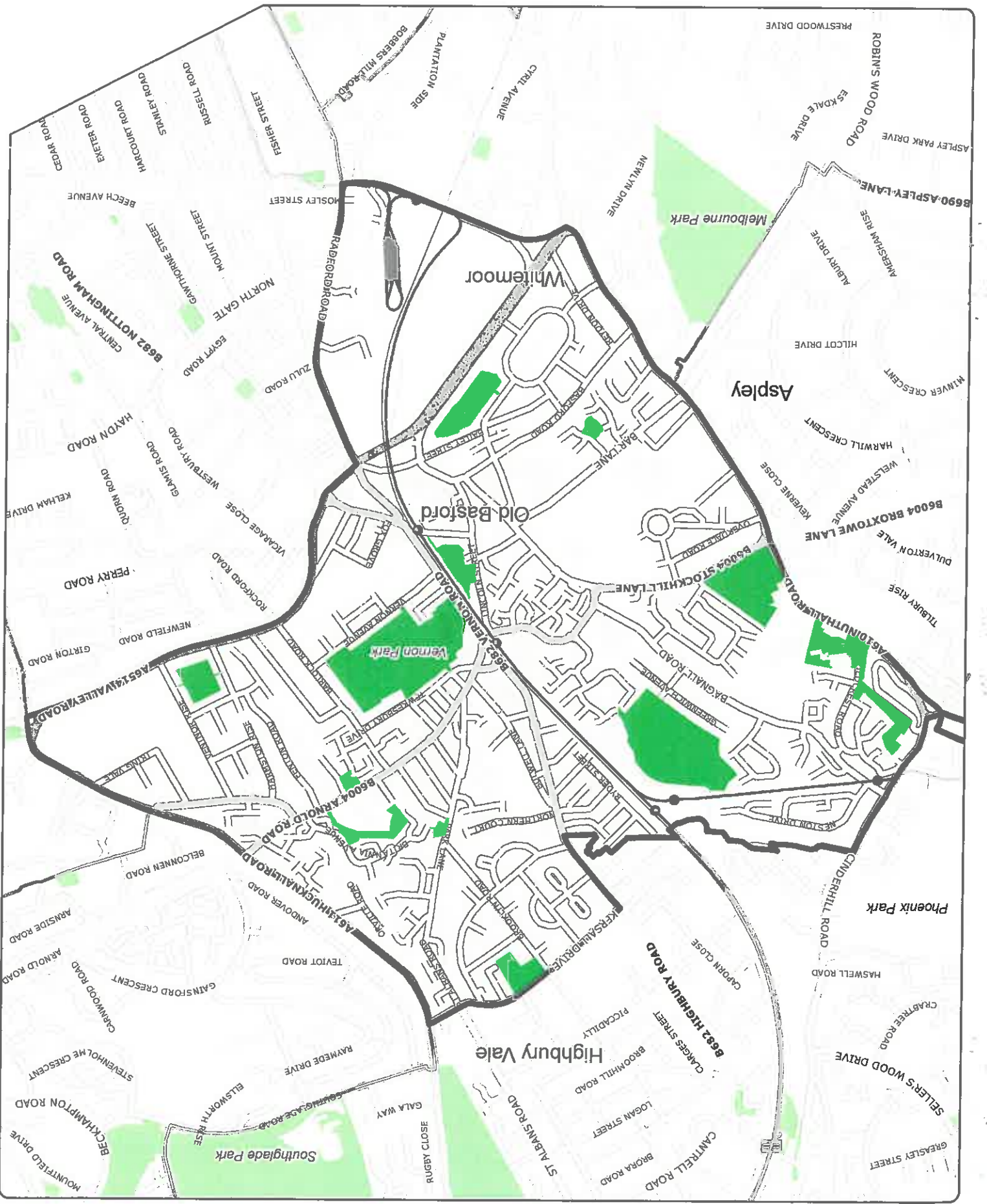


Dogs on leads by direction

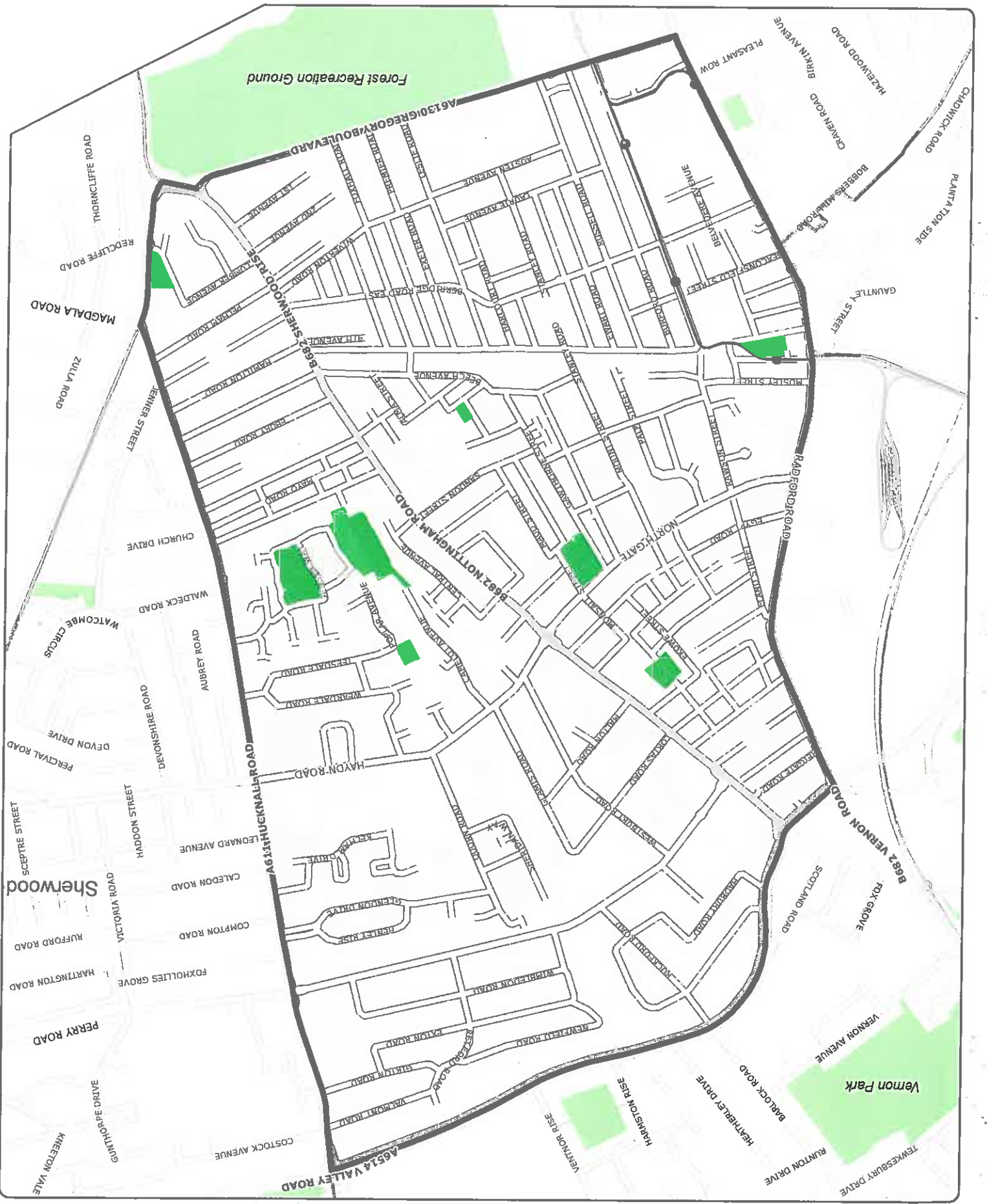


© Crown copyright and database right 2016. Ordnance Survey Licence number 100019317. GIS Tabm 18/08/2016

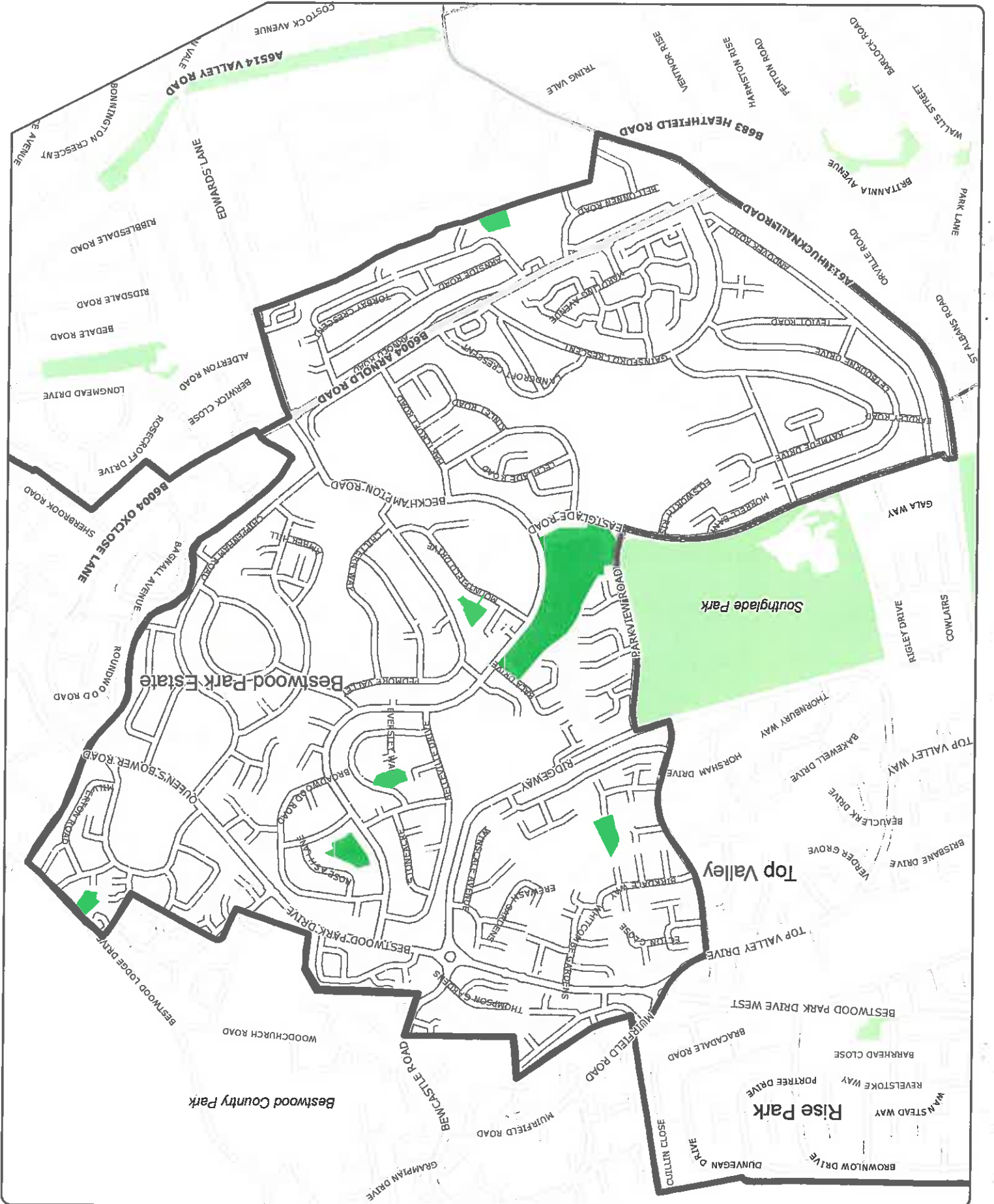
Key



NCC's Public Spaces Protection Orders in Respect of Dogs  
Basford Ward  
Plan 4

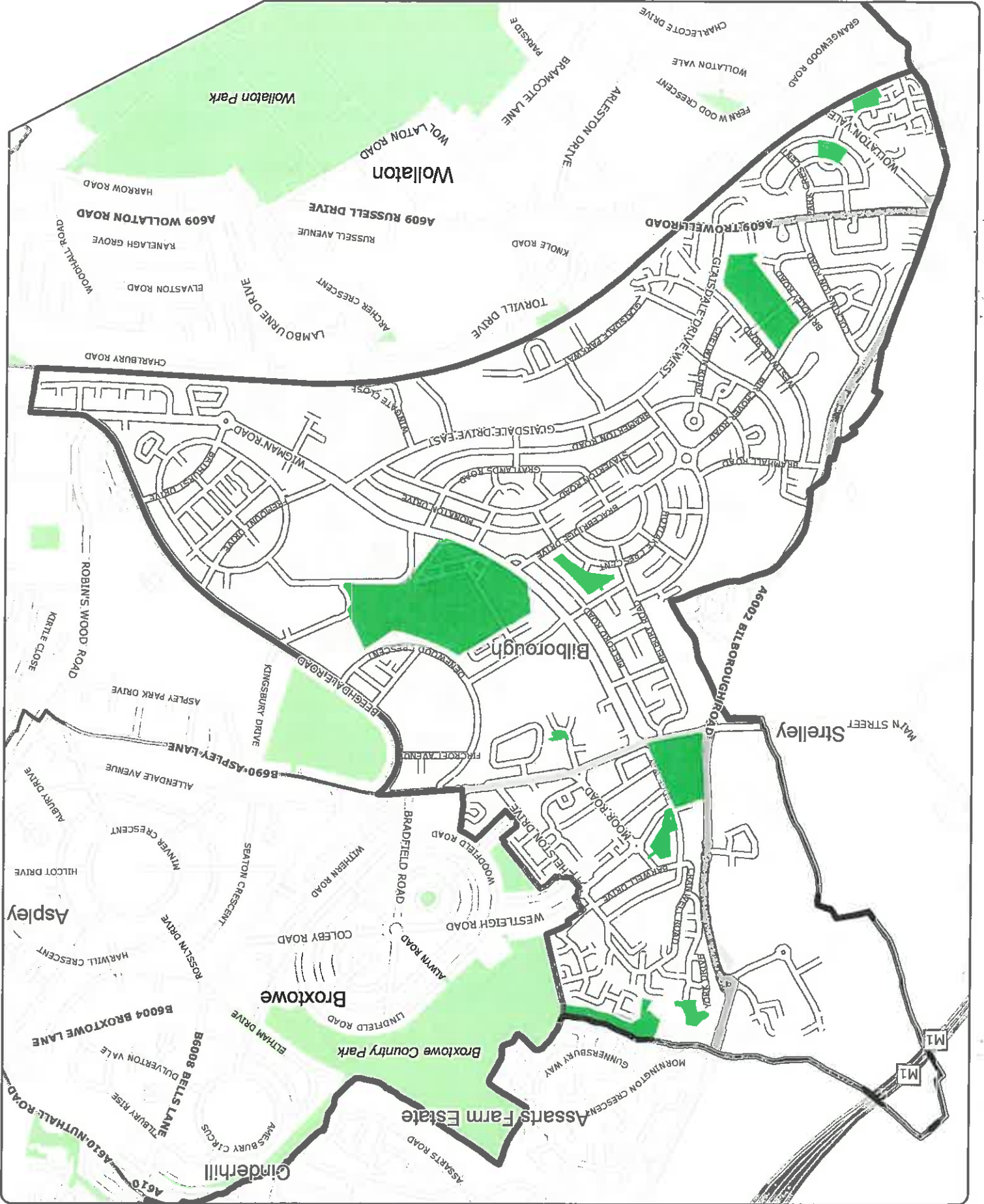


NCC's Public Spaces Protection Orders in Respect of Dogs  
Berridge Ward  
Plan 5



# NCC's Public Spaces Protection Orders in Respect of Dogs

Plan 7



© Crown copyright and database right 2016. Ordnance Survey Licence number 100019317. GIS Team 18/08/2016

0 115 230 Meters



City Boundary

Wards

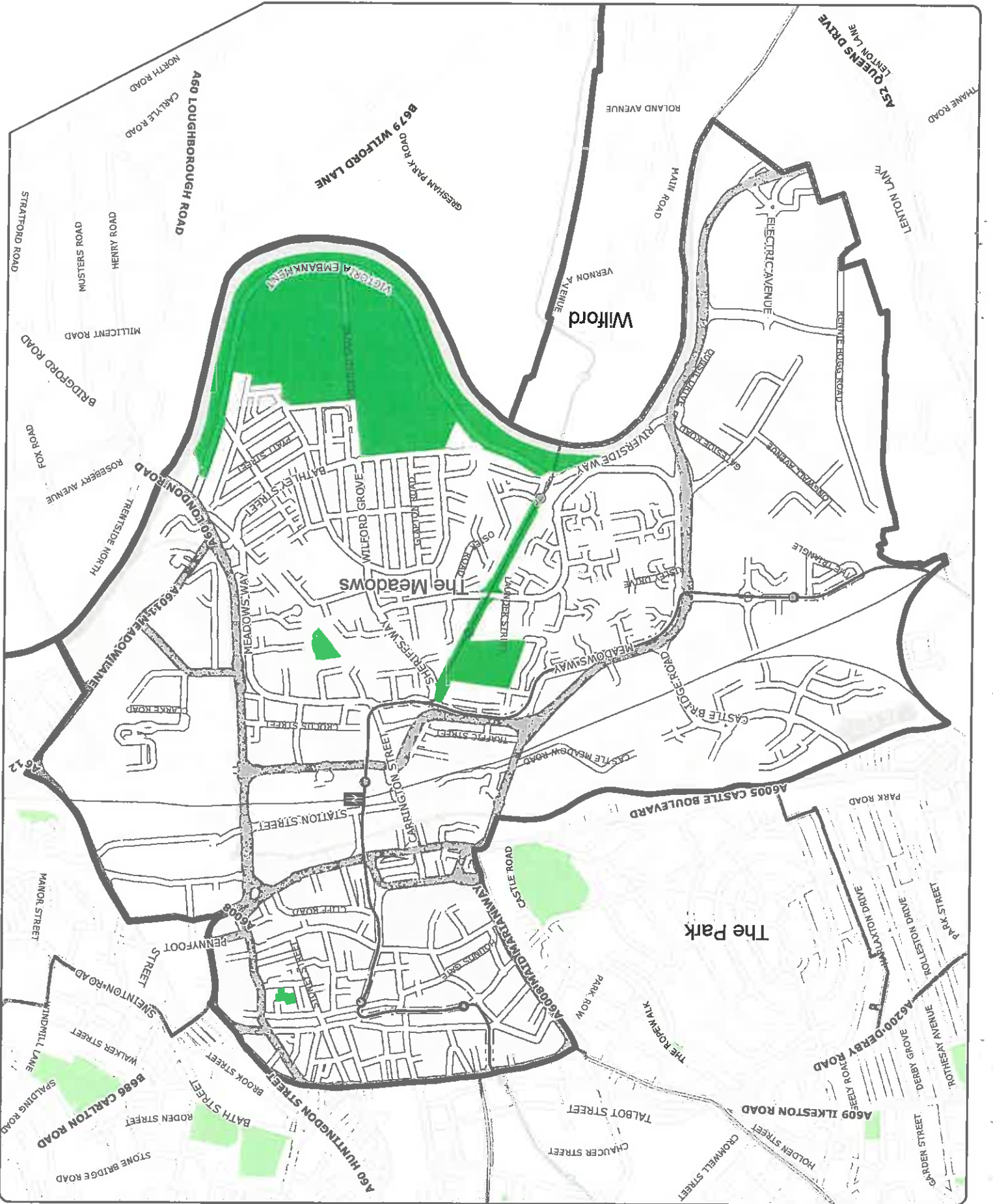
Dogs on leads by direction

Dogs on leads by direction



© Crown copyright and database right 2016. Ordnance Survey Licence number 100019317. GIS Team 18/08/2016

Key



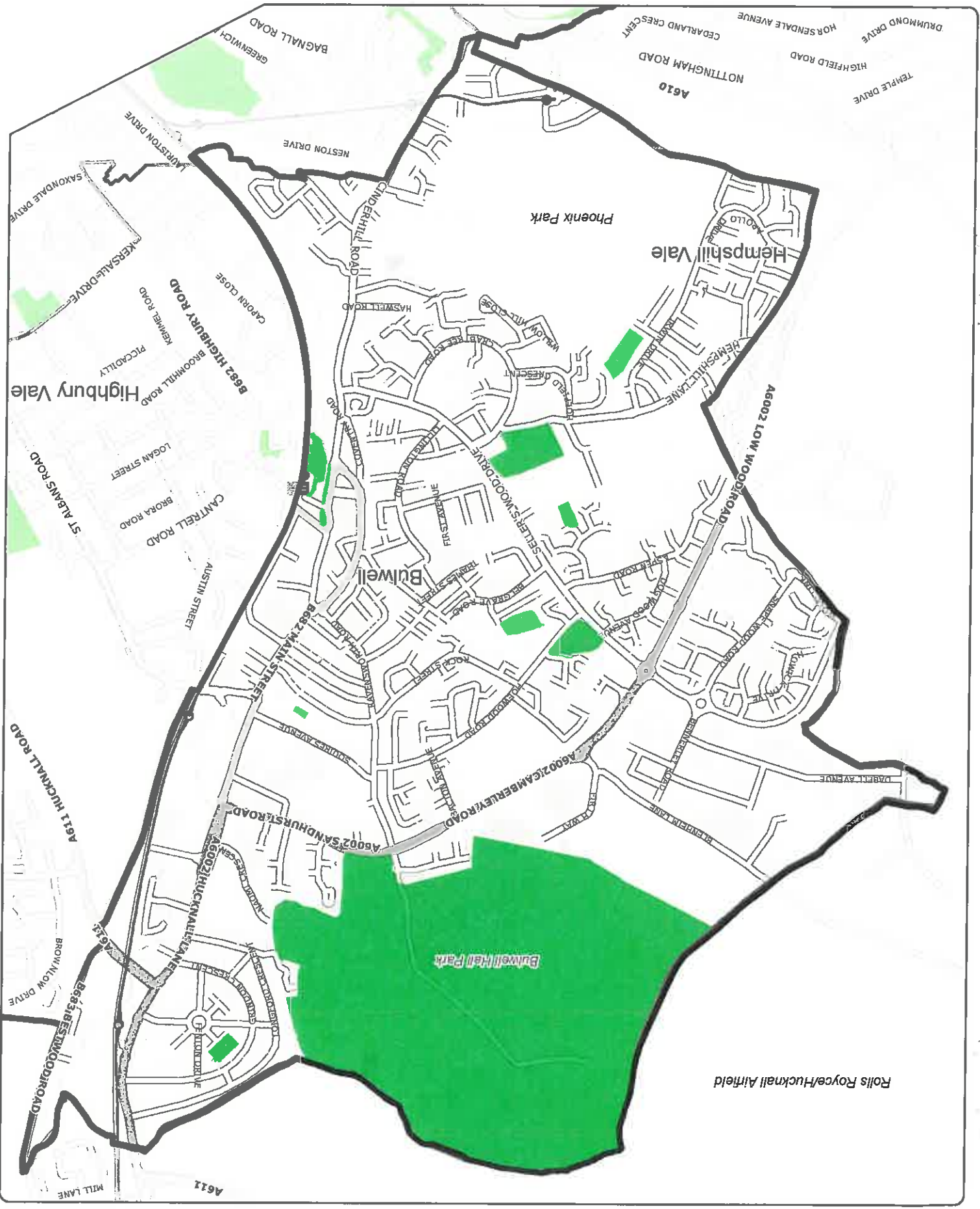
Bridge Ward  
NCC's Public Spaces Protection Orders in Respect of Dogs  
Plan 8





© Crown copyright and database right 2016. Ordnance Survey Licence number 100019317. GIS Team 18/08/2016

Key



Rolls Royce/Hucknall Airfield

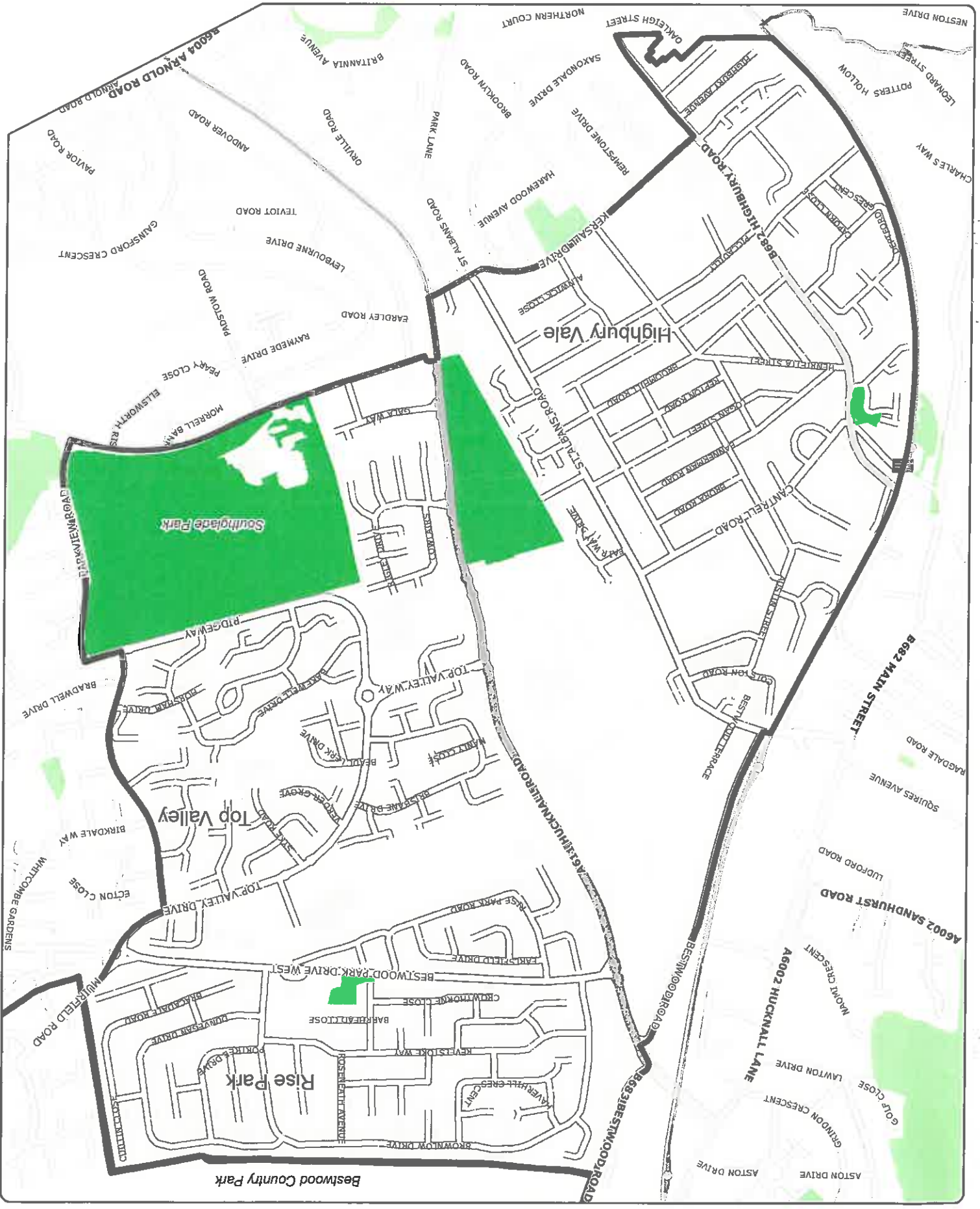
Bulwell Hill Park

Hempsill Vale

Phoenix Park

Highbury Vale

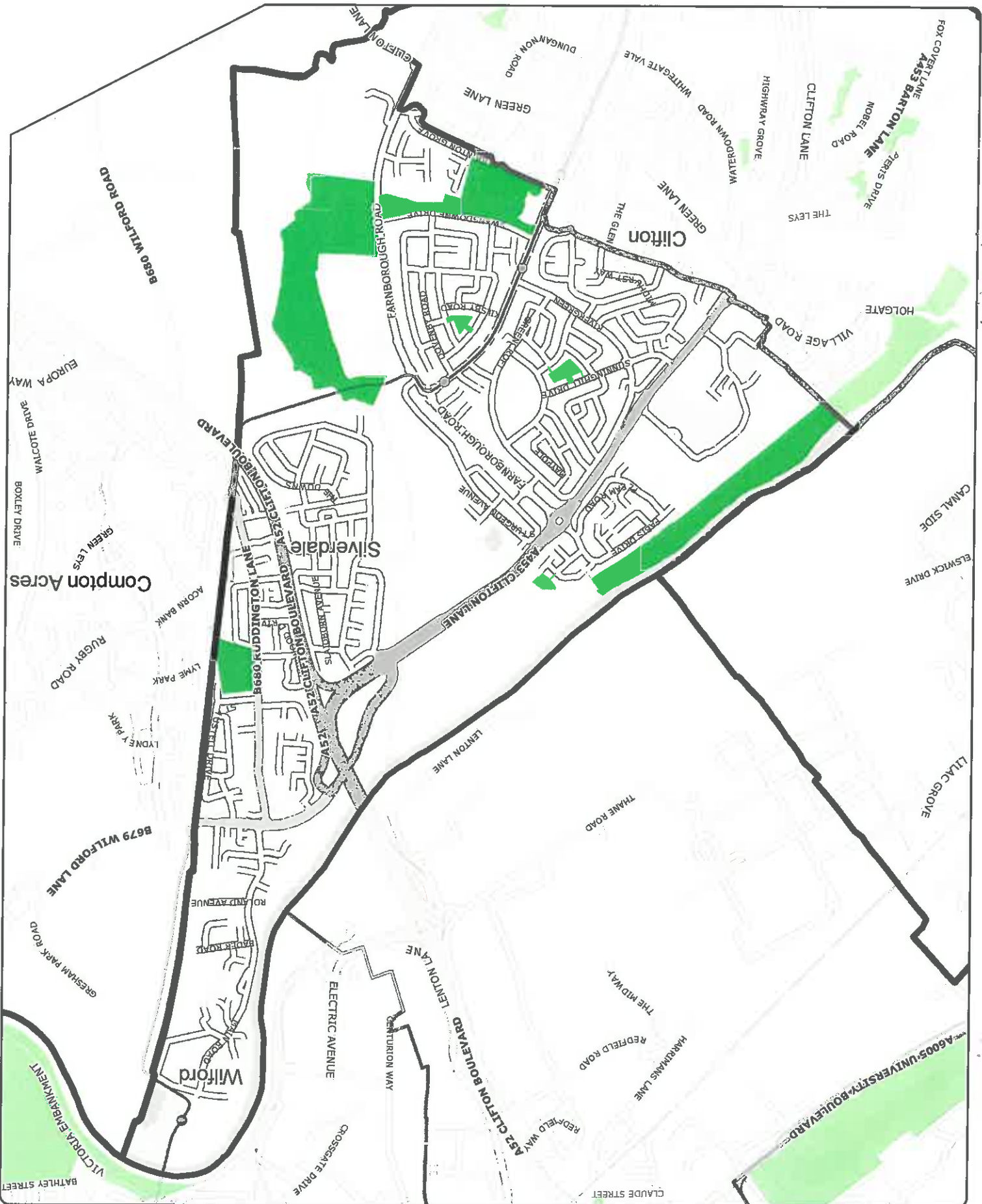
Bulwell

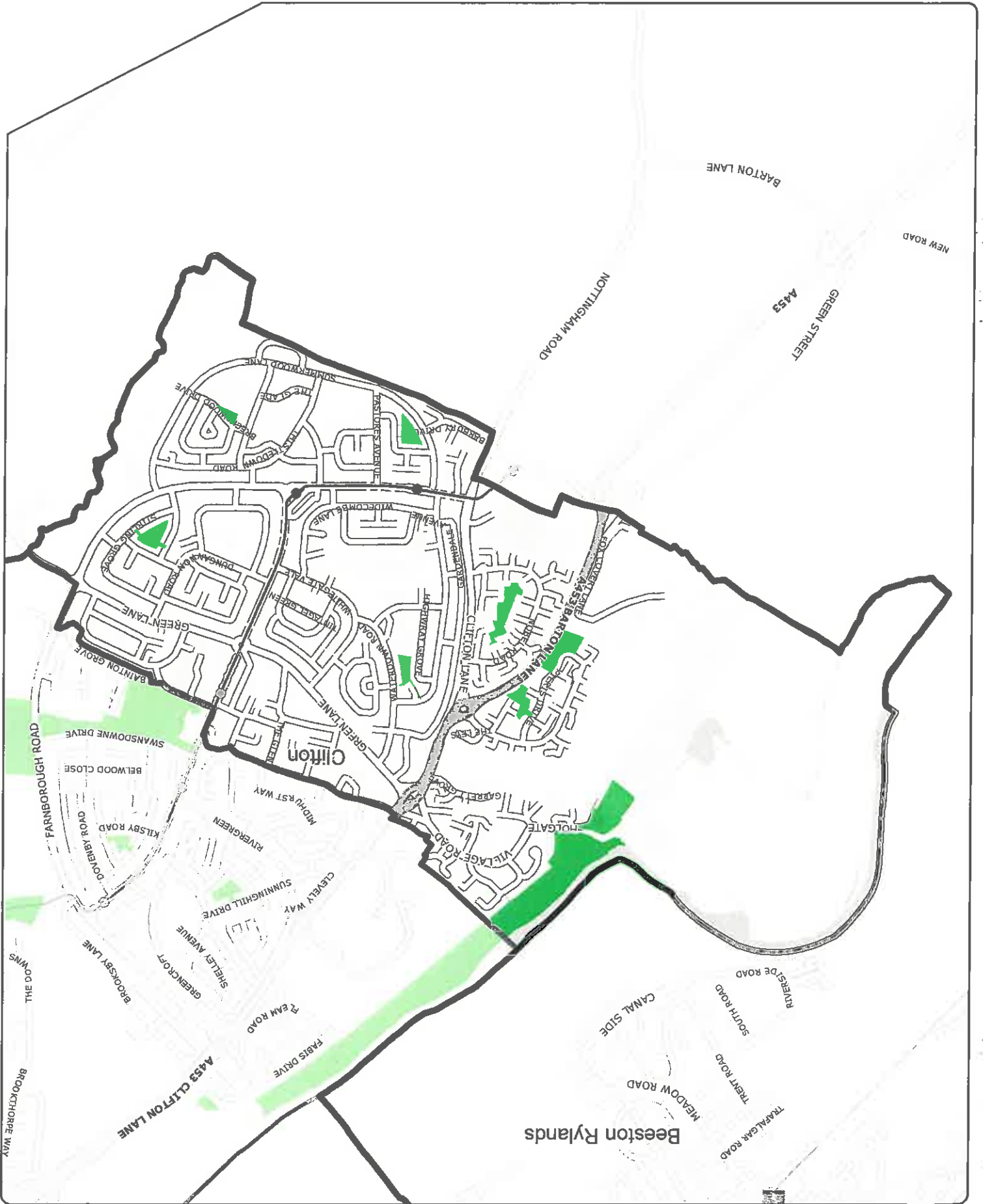


# NCC's Public Spaces Protection Orders in Respect of Dogs

Plan 11

Clifton North Ward





© Crown copyright and database right 2016. Ordnance Survey Licence number 100019317. GIS Team 1/8/08/2016

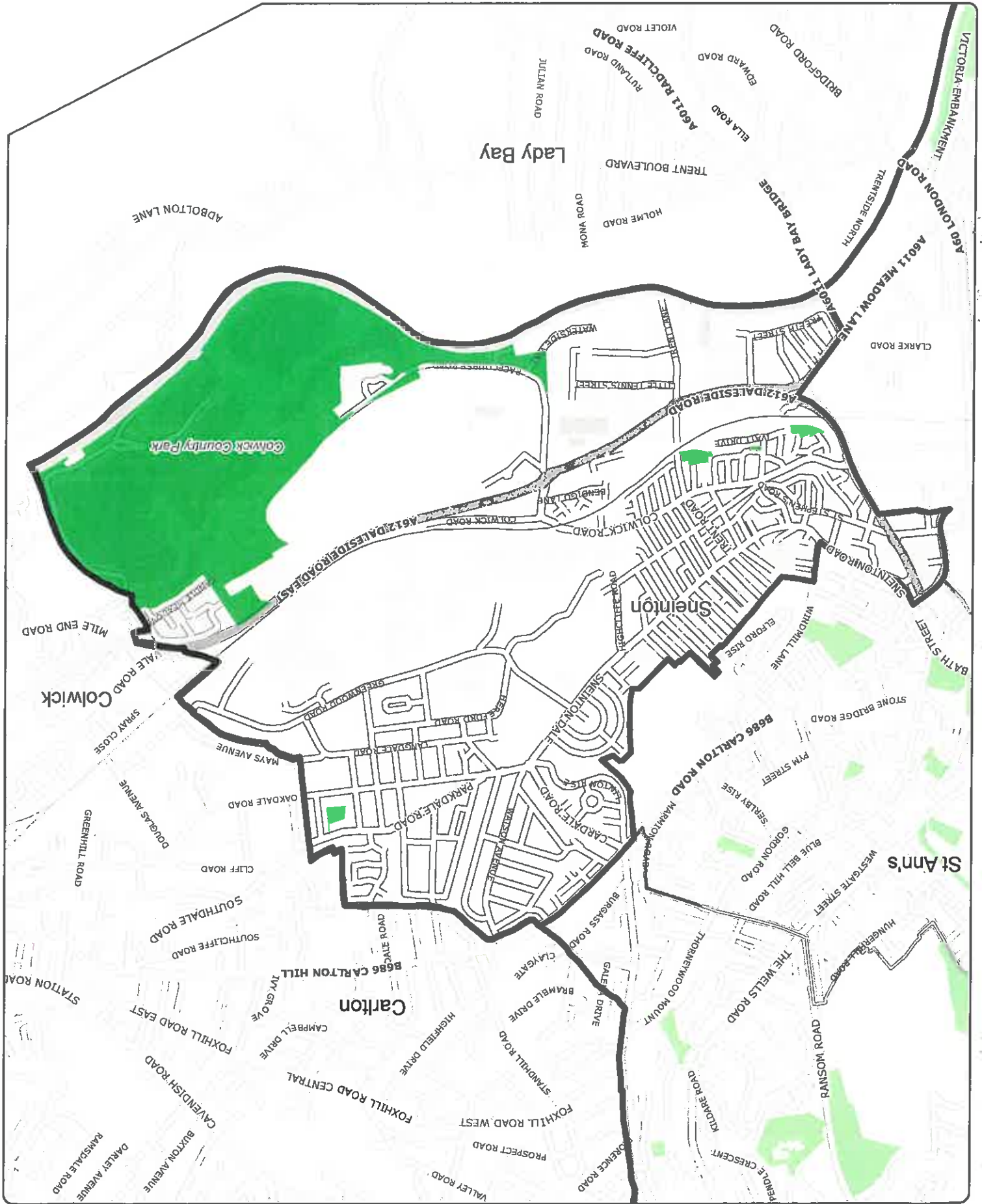
Key

City Boundary

Wards

Dogs on leads by direction





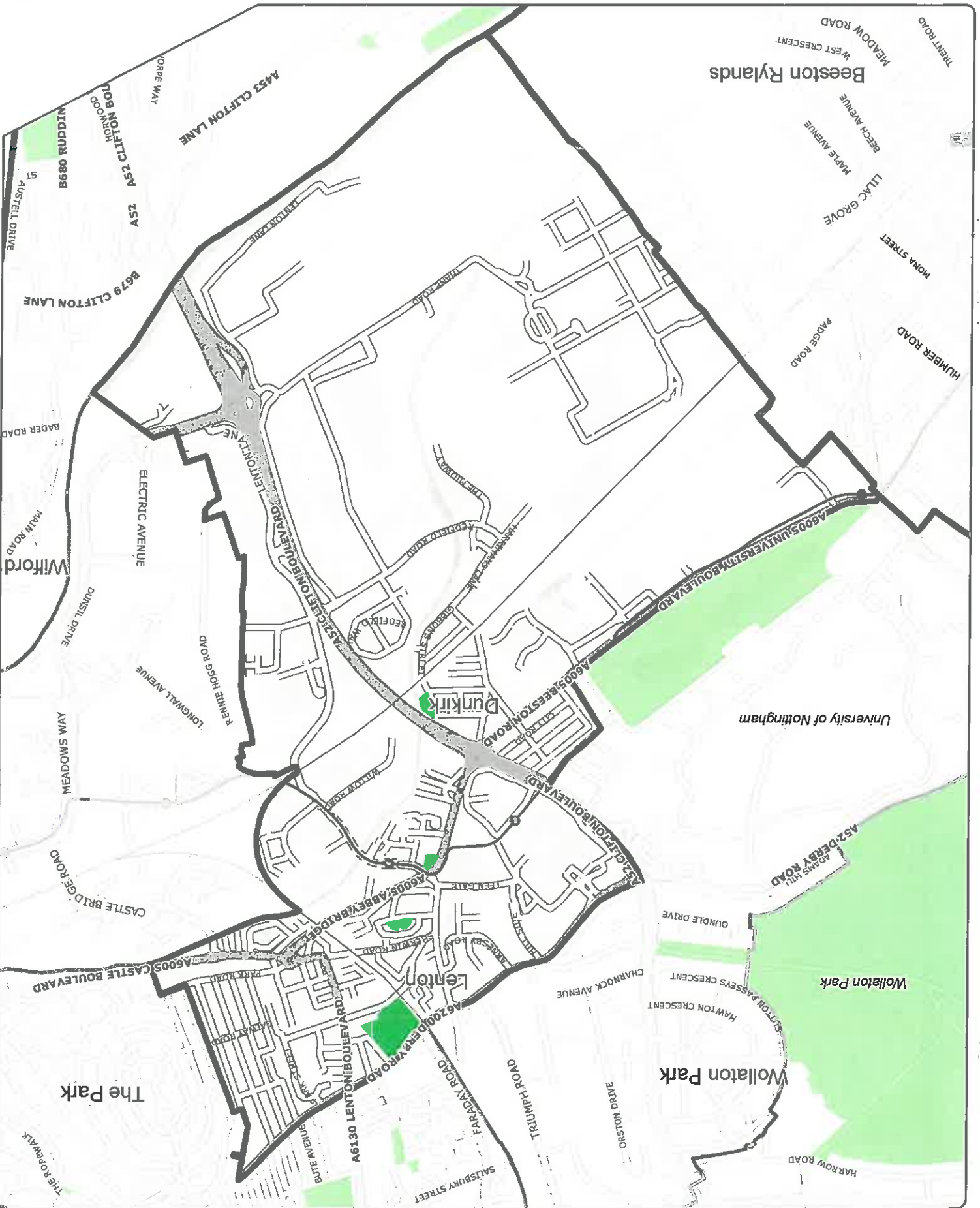
Key

City Boundary

Wards

Dogs on leads by direction

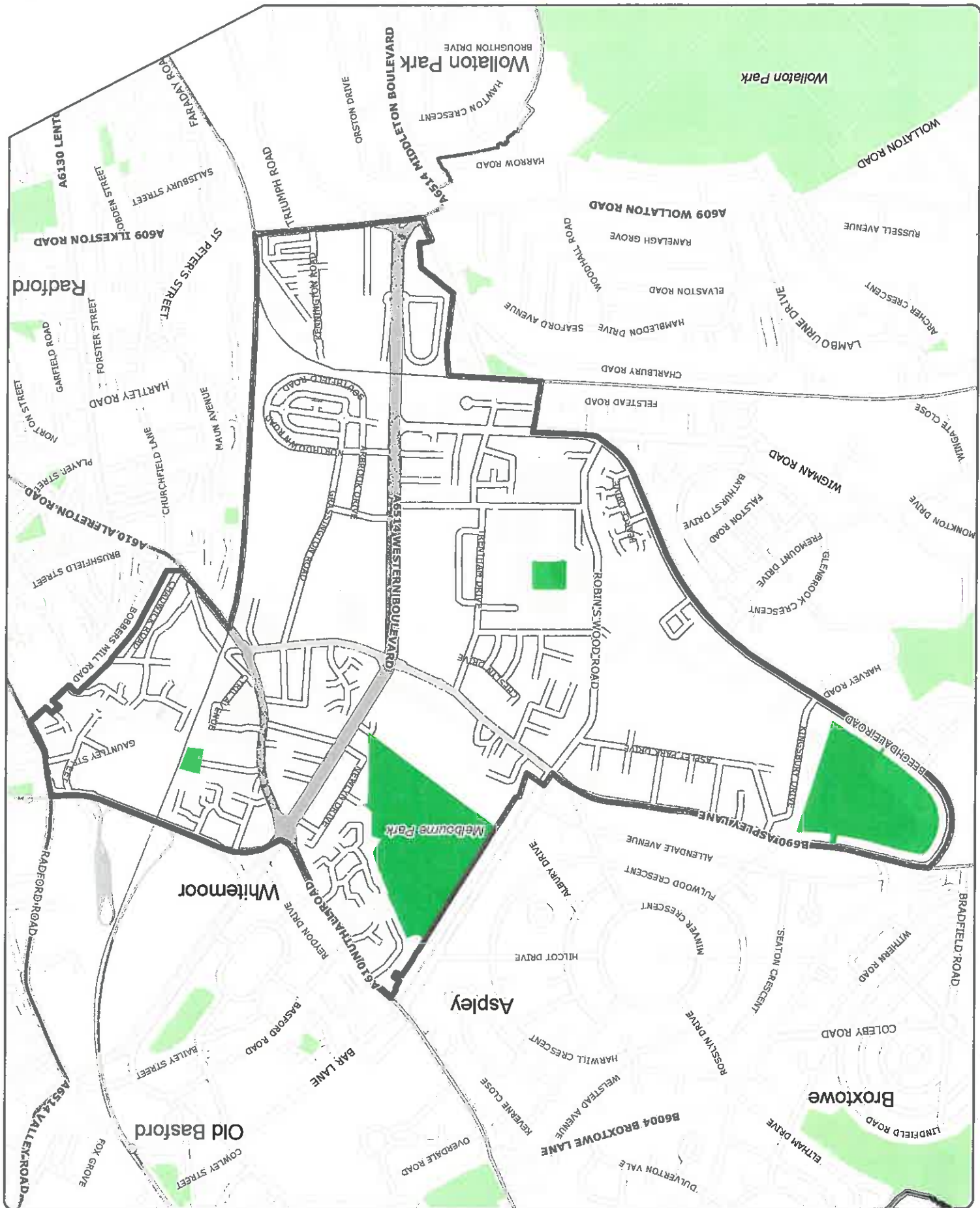
© Crown copyright and database right 2016. Ordnance Survey Licence number 100019317. GIS Team 18/08/2016



NCC's Public Spaces Protection Orders in Respect of Dogs

plan 14

Dunkirk and Lenton Ward



© Crown copyright and database right 2016. Ordnance Survey Licence number 100019317. GIS Term 1 8/02/2016

Key

City Boundary  
Wards

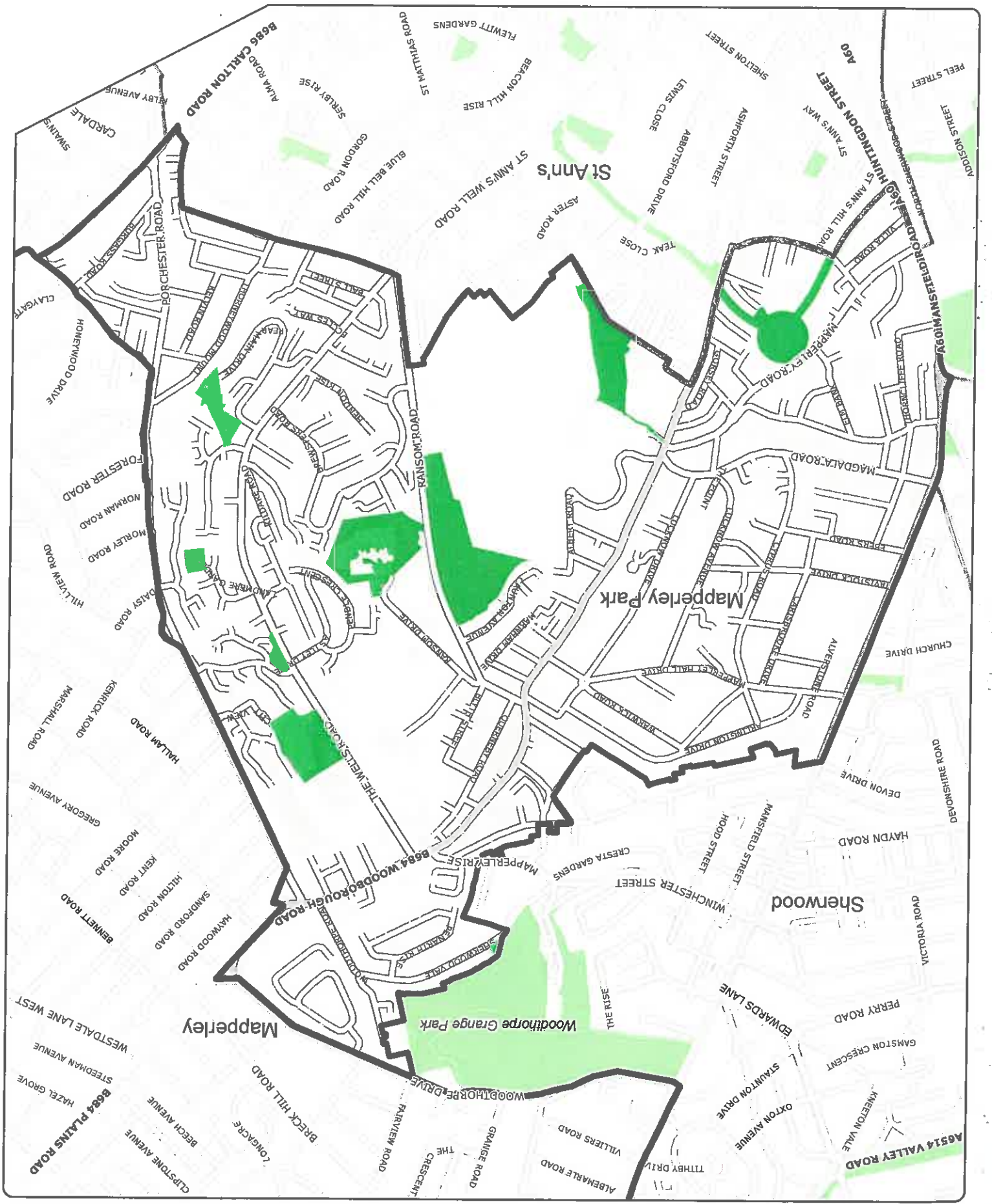
Dogs on leads by direction

Dogs on leads by direction



© Crown copyright and database right 2016. Ordnance Survey Licence number 100019317. GIS Tarm 18/08/2016

Key



Plan 16

# NCC's Public Spaces Protection Orders in Respect of Dogs

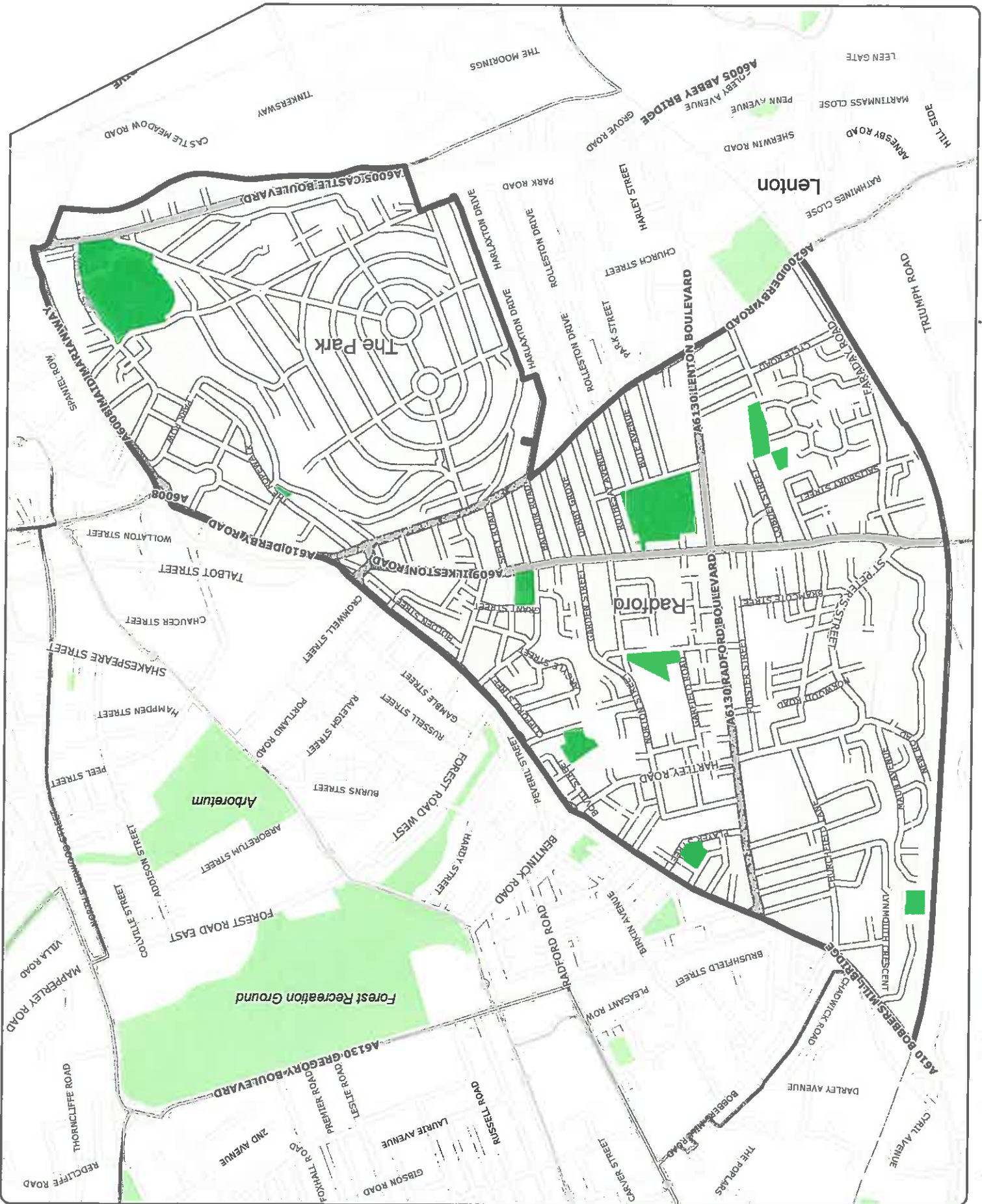
## Mapperley Ward



# NCC's Public Spaces Protection Orders in Respect of Dogs

Plan 17

## Radford and Park Ward



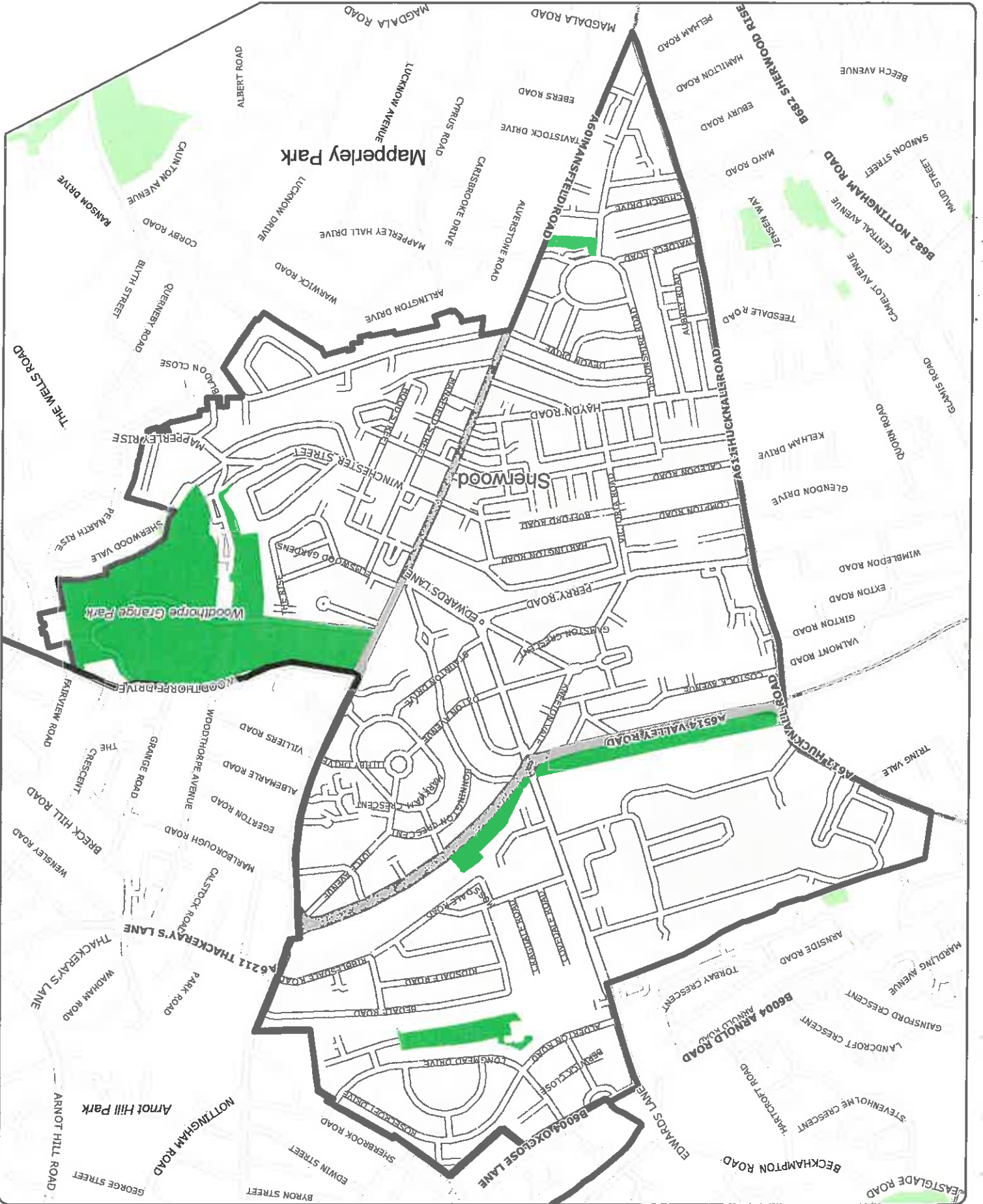
0 75 150 300  
Meters

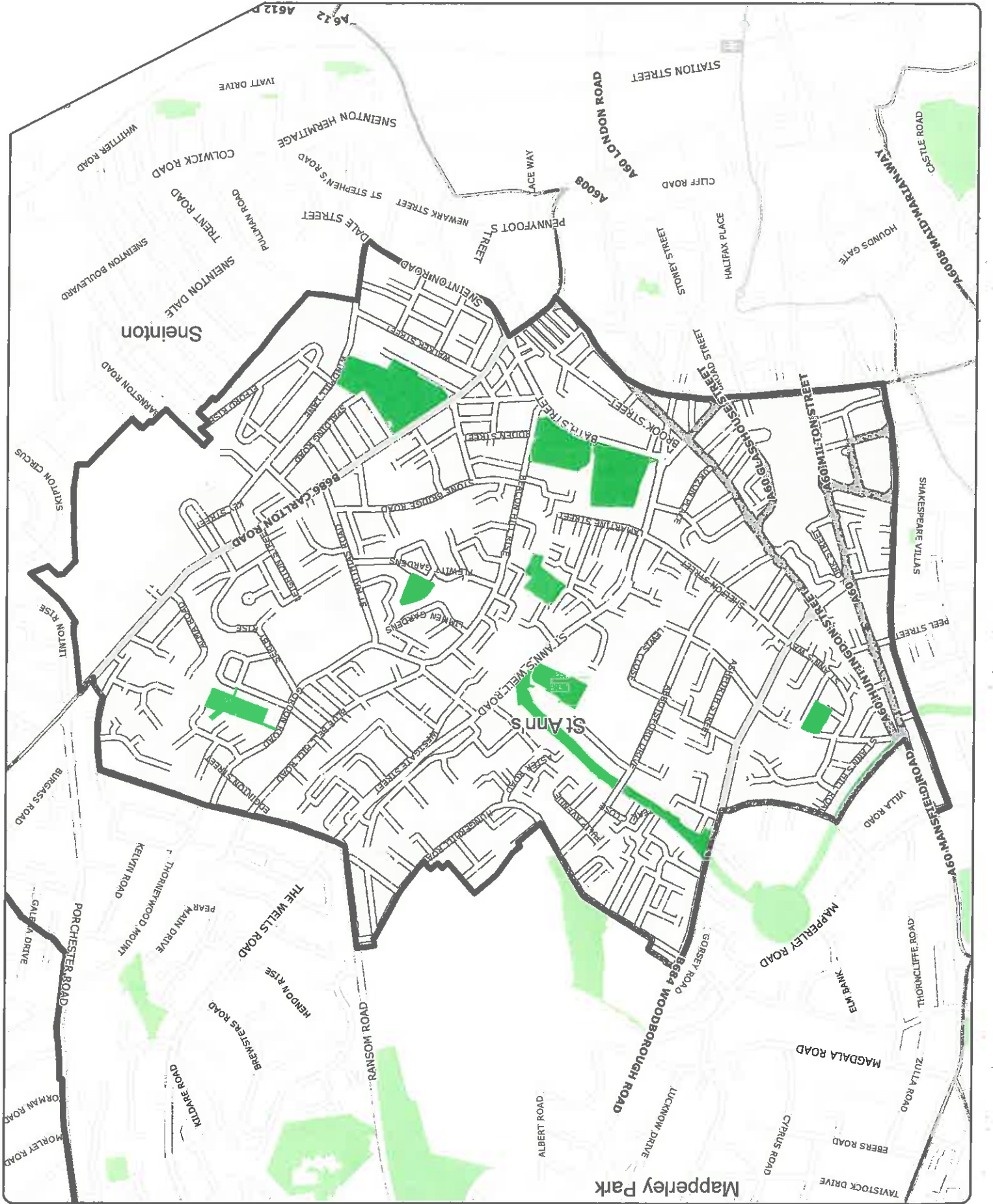
© Crown copyright and database right 2016. Ordnance Survey Licence number 100019317. GIS Team 18/08/2016

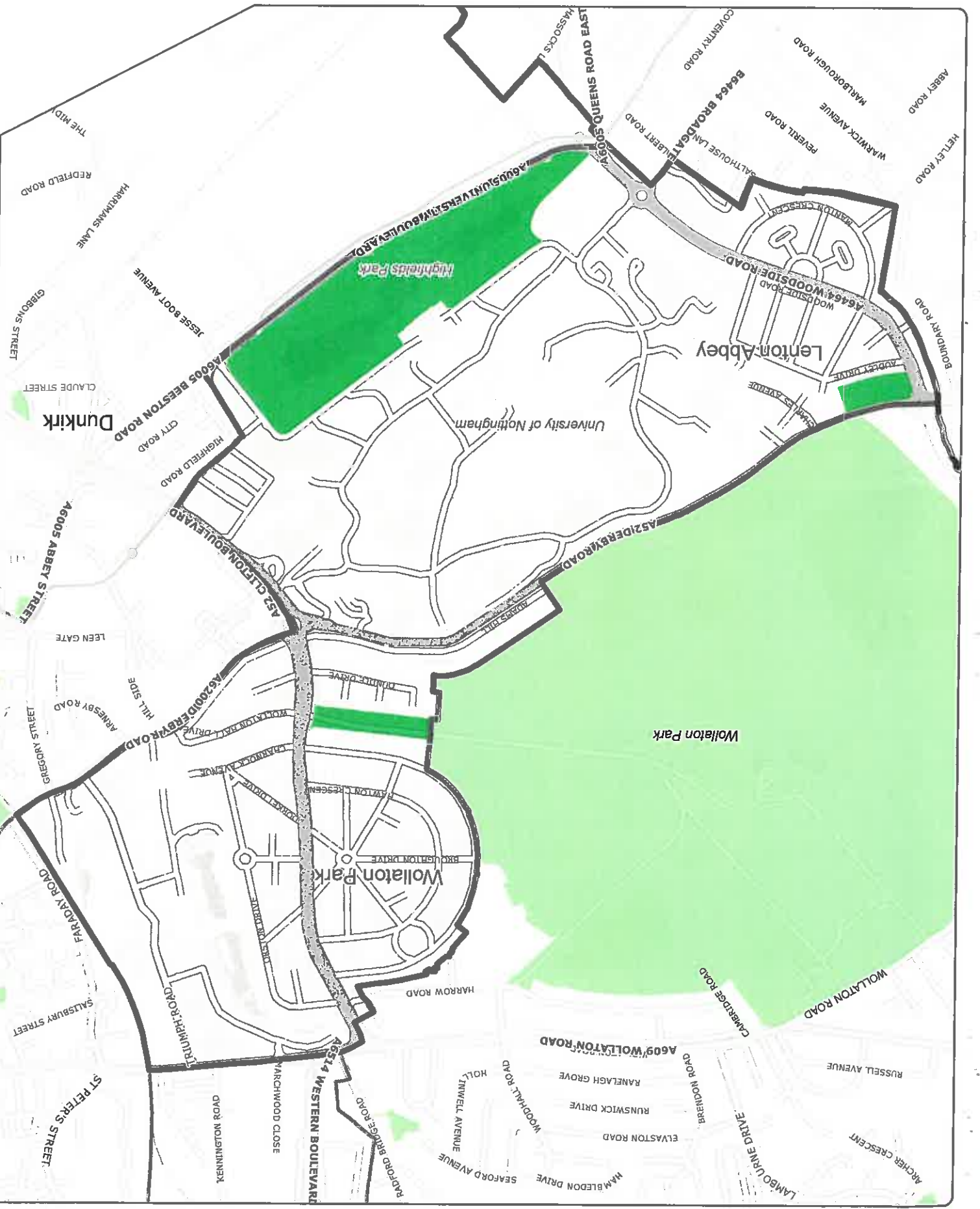
# NCC's Public Spaces Protection Orders in Respect of Dogs

Plan 18

## Sherwood Ward





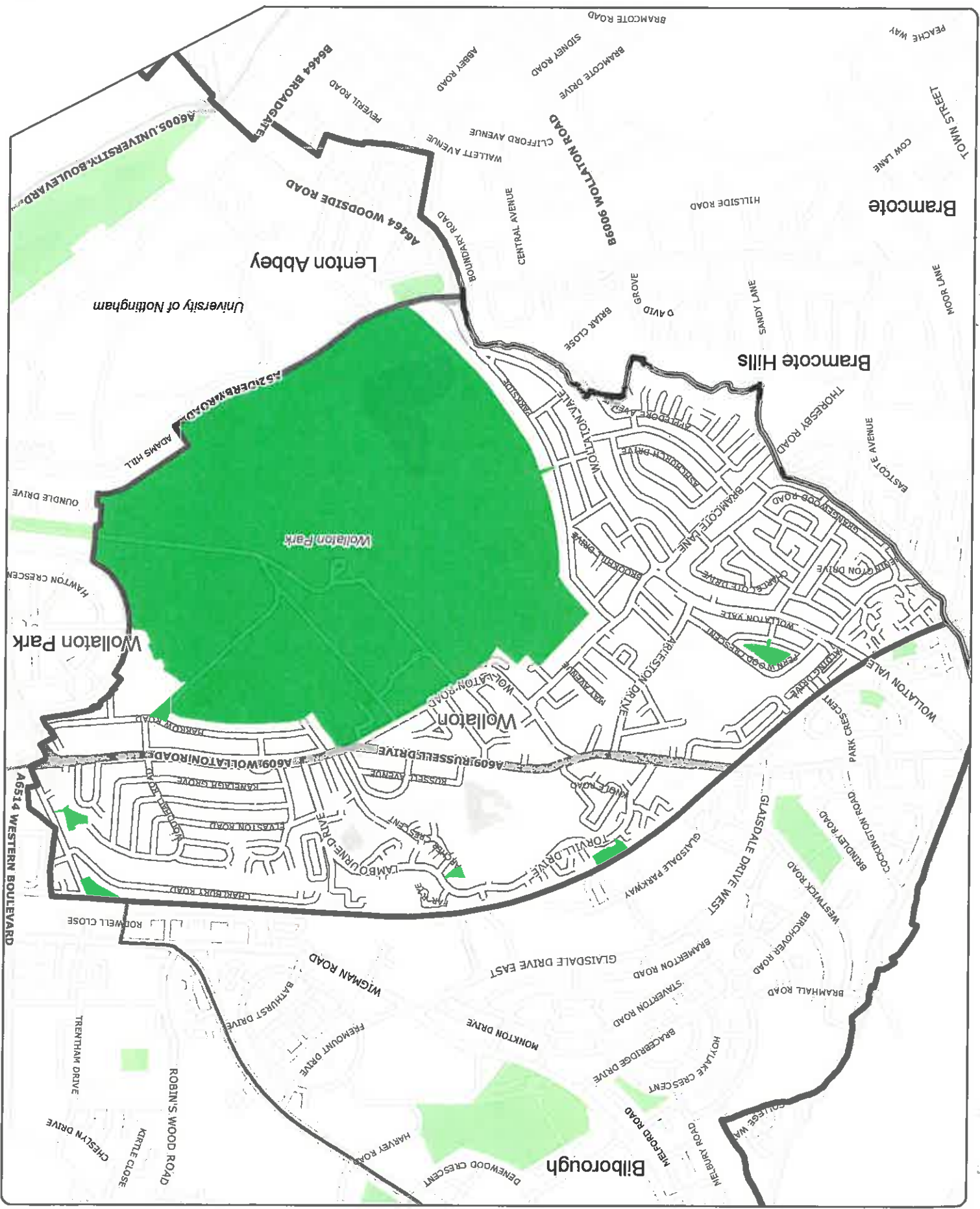


NCC's Public Spaces Protection Orders in Respect of Dogs  
Wollaton East and Lenton Abbey Ward  
Plan 20

# NCC's Public Spaces Protection Orders in Respect of Dogs

Plan 21

## Wollaton West Ward



© Crown copyright and database right 2016. Ordnance Survey Licence number 100019317. GIS Team 18/08/2016

City Boundary  
Wards

Dogs on leads by direction



*S. Morgan*  
Legal Services Manager  
Authorised Signatory

Given under the COMMON SEAL  
( Of NOTTINGHAM CITY COUNCIL )

Dated this 1<sup>st</sup> day of August 2016

6. A person does not commit an offence under this Order by failing to comply with a prohibition or requirement that the Authority did not have power to include in the Order

5. A person who is guilty of an offence under Article 4 shall be liable on summary conviction to a fine not exceeding level 3 on the standard scale

### Penalty

(2) For the purposes of this Article an Authorised Officer of the Authority may only give a direction under this Order to put and keep a dog on a lead if such restraint is reasonably necessary to prevent a nuisance or behaviour by the dog likely to cause annoyance or disturbance to any other person on any Relevant Land damage to property or the worrying or disturbance of any animal or bird

b) the owner, occupier or other person or authority having control of the Relevant Land has consented (generally or specifically) to his failing to do so

## SCHEDULE OF LAND

This Order applies to all land in the administrative area of Nottingham City Council that is open to the air and to which the public have access (with or without payment) which is shaded green on the attached plan numbered 1 attached to this Order and for illustrative purposes shaded green on the plans numbered 2 – 21 attached to this Order which shall include those places described in Part 1 below and in the event of a conflict between the plan numbered 1 attached to this Order and Part 1 of this Schedule, the plan numbered 1 shall take precedence.

For the purposes of this Schedule, land which is covered is to be treated as land which is "open to the air" if it is open to the air on at least one side.

### Part 1

Valley Road Park - West  
Toley Close  
Angel Green park  
Tintagel Green Open Space  
St Peter's with St James' Church, Bridge  
King George V Park  
Victoria Embankment  
Lenton Abbey Park  
Firbeck Road Open Space  
Commercial Road Open Space  
Torville Drive Open Space  
Scatell Way Open Space  
King Edward Park  
Streiley Recreation Ground  
Instow Rise Open Space  
Wollaton Park  
Hempsill Lane Recreation Ground  
Highfields Park 2 (University Owned)  
Clifton Playing Fields  
Basford Hall Open Space  
Mountfield Drive Open Space  
Fearnleigh (aka Pennant) Park  
Queens Drive Recreation Ground  
Brewhouse Yard  
Salsbury Square Open Space  
Bilborough Park  
Barton Green open space  
Woodthorpe Grange Park  
Heathfield Road Open Space  
Ruddington Lane park  
Barker Gate Rest Garden  
Sunninghill Open Space

Hood Street Open Space  
Wallen Street Open Space  
Colwick Country Park  
Beechdale Mews  
Nuthall Recreation Ground (Stockhill Lane park)  
John Farr Rest Garden  
Wyton Close (Chronos Richardson)  
Keys Close Green  
Cope Street Open Space  
Cottam Gardens Open Space  
Lenton Recreation Ground  
Hoylake Crescent  
John Carroll Leisure Centre play area  
Hazel Hill Crescent Open Space  
Melbourne Park  
Hayden Garth Open Space  
Independent Street Open Space  
Elm Avenue  
Rise Park Open Space  
Barlock Drive Open Space  
Birchover Recreation Ground  
Bulwell Forest Recreation Ground  
Glenloch Drive Open Space  
Seaford Avenue Open Space  
Britannia Avenue Open Space  
Greenway Community Centre  
Shakespeare Villas  
Gawthorne Street Open Space  
Hedley Villas  
Vernon Park  
St Mary's Rest Garden  
Broxtowe Country Park verge  
Orchard Court Open Space  
Whitemoor Drive Open Space  
Valley Road Park - Kickabout Area  
Kirkstead Street Open Space  
Lincoln Street Open Space  
Collesbourne Road Open Space  
Poplar Avenue Open Space  
Eastglade Park  
Chaffont Drive open space  
City Heights Open Space  
Christ Church Rest Garden  
Carrington Open Space  
Kennington Road Open Space  
Chediston Vale Park



Boynton Drive  
Lambourne Drive Open Space  
Lenton Priory Park  
Latimer Close Open Space  
King Edward Park - old NECTA building  
Wallis Street Open Space  
Bulwell Hall Park  
Bobbersmill Open Space  
Hine Hall open space  
Waterloo Promenade  
Chard Street Open Space  
Tricketts Yard Open Space  
Marham Close  
Pearmain Park & Mickleborough Railway  
Cutting  
Waterdown Road Open Space  
Clifton Hall  
Corporation Oaks  
Robin Hood Chase  
Heskey Park  
Irwin Drive Open Space  
Hambling Close Open Space  
Highfields Park 1 (NCC Owned)  
Breckswood Drive Open Space  
Hoewood Road Open Space  
Coppice Recreation Ground  
Marmion Park  
St Peter's Church, Radford  
Oldknow Street Open Space  
Forster Street Open Space  
Meadows Open Space  
Broxtove Country Park - Lindfield Road Former  
Arboretum  
Edgeway Plantation  
Victoria Park  
Queen's Walk  
Locksley (Groveside) Open Space  
Forest Recreation Ground  
Broxtove Country Park  
Jersey Gardens  
Pieris Drive open space  
Clifton Central Park  
St Anns Wells Road Open Space  
Parkdale Road Open Space  
Southglade Park  
Nottingham Castle  
Bulwell Bogs

Bramley Road Recreation Ground  
Sandpiper Way Open Space  
Rosedale Drive Open Space  
Radford Bridge Road Open Space  
Sycamore Recreation Ground  
Shipstone Street Open Space  
Newcastle Terrace (The Park) open space  
Whitwell Road Open Space  
Mildenhall Crescent Open Space  
Ragdale Road  
Fermwood Drive (Rushford Drive) Park  
Lancaster Way Open Space  
Landmere Gardens Open Space  
Penn Avenue Open Space - 1  
Penn Avenue Open Space - 2  
Dunkirk Road Open Space  
Leen Valley Open Space  
Broxtove Country Park  
Radford Recreation Ground

THE NOTTINGHAM CITY COUNCIL DOGS ON LEAD BY DIRECTION  
PUBLIC SPACES PROTECTION ORDER 2016  
(ANTI-SOCIAL BEHAVIOUR, CRIME AND POLICING ACT 2014, CHAPTER  
2, SECTION 59 – 75)

**NOTTINGHAM CITY COUNCIL  
DOGS ON LEAD BY DIRECTION  
PUBLIC SPACES PROTECTION ORDER 2016  
(ANTI-SOCIAL BEHAVIOUR, CRIME AND POLICING ACT 2014, CHAPTER 2  
SECTION 59 – 75)**

Pursuant to section 60 (2) of the Anti-social Behaviour, Crime and Policing Act 2014 the period that the Nottingham City Council Dogs on Lead by Direction Public Spaces Protection Order 2016 has effect has been extended. This extension was approved by the Nottingham City Council's Executive Board on 16 July 2019. This Order will now expire on 24 September 2022.

Dated this 7th day of August 2019

Signed:

  
Authorised Signatory