

Going to school in Nottingham

2020/21

Information about
applying for a
school place



- Starting school
- Transferring from an infant school to a junior school
- Transferring from a primary / junior school to a secondary school
- Applying for a school place during the school year



Nottingham
City Council



Apply online for a school place



If your child is starting school, transferring from an infant school to a junior school or transferring from a primary/junior school to a secondary school in the 2020 autumn term you need to apply for a school place.

Closing dates for applying for a school place are:

31 October 2019 -
Secondary school place
(apply between
6 September 2019 and
31 October 2019)

15 January 2020 -
Infant, junior or primary
school place (apply
between 15 November
2019 and 15 January 2020)

If we receive your application after the closing date, this will reduce your chances of getting a place at your preferred school, particularly if it is popular.

Applying online is the quickest and most secure way to apply for your child's school place.

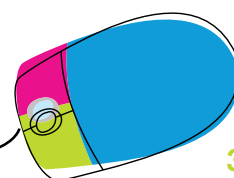
If your child is registered at a city school, and lives in Nottingham city, we will send you information about how to apply for a school place. If you have access to an email account you can apply for a school place online at www.nottinghamcity.gov.uk/schooladmissions

If you do not have an email account you'll need to set one up or visit www.go-on.co.uk and follow the step-by-step instructions.

Benefits of applying online

- It is quick and easy.
- It is safe and secure.
- You can read the online tutorial before you start, which will guide you through how to apply.
- Internet access is available at most Nottingham city libraries and children's centres, and some schools may allow you to use their computers to apply.
- The system helps you to fill in your form correctly by giving a selection of options in drop-down lists.
- We will send you an email to confirm that we have received your application.
- You can change your application at any time up to the closing date.
- You will receive your decision by email on the national offer day, rather than having to wait for your decision to arrive in the post.

Apply online: www.nottinghamcity.gov.uk/schooladmissions



Important dates to remember

Moving up to secondary school from primary or junior school	Starting school (reception class) and infant to junior transfers (Year 3 place)	What happens on these dates?
31 October 2019	15 January 2020	Closing date for receipt of all application forms and any supplementary information or supporting information
29 November 2019	10 February 2020	Last date for exceptional late applications to be considered
2 March 2020	16 April 2020	<ul style="list-style-type: none"> National offer day. Online applicants receive an email showing the outcome of their application
2 March 2020	16 April 2020	<ul style="list-style-type: none"> Letters sent only to parents who applied using a paper application form, by second class post showing the outcome of their application
2 March 2020	16 April 2020	<ul style="list-style-type: none"> Waiting lists operate from this date for any school that is full
16 March 2020	30 April 2020	<ul style="list-style-type: none"> Final date for parents to accept or refuse the place that is offered
30 March 2020	18 May 2020	Deadline for receipt of appeals for applications made by the closing date (some own admission authority schools may use a different date)
May/June 2020	June/July 2020	Appeal hearings take place for appeals lodged by the deadline (some own admission authority schools may use a different date)
The waiting list for primary, infant, junior and secondary schools will operate on the offer day and will be maintained by the local authority up to 27 August 2020 . After this date the relevant admission authorities will operate their own waiting list in accordance with their own arrangements.		Waiting lists close*

If you wish to apply for a place in Year 10 at a 14-19 school, academy or studio school, the closing date is 31 October 2019. Please see the admission arrangements for the Nottingham University Academy of Science and Technology in the separate Appendix 1 for further details.

* All admission authorities must maintain a waiting list for the normal year of entry until the end of the 2020 autumn term. Some admission authorities may continue to hold waiting lists after this date.

Welcome

This information is about children starting school; transferring to junior or secondary schools or changing schools during the school year in Nottingham. To apply for your child's school place it's best to apply online at **www.nottinghamcity.gov.uk/schooladmissions**. Here you will also find the facility to translate the pages into your language and alternative formats. If you require a Braille copy please contact us by phone on 0115 841 5568.

Urdu

یہ معلومات ان بچوں کے سکول شروع کرنے، جونیئر سکول میں منتقل ہونے اور پھر کیئرڈی سکول میں جانے کے بارے میں ہیں۔ بچہ کو داخلہ لینے کے لئے آن لائن (Online) درخواست **www.nottinghamcity.gov.uk/schooladmissions** پر آجکی معلومات کو اپنی زبان میں ترجمہ کرانے کی سہولت بھی ملے گی۔ اگر آپ کیوریل (Braille) میں معلومات چاہتے ہیں اس نمبر پر فون کریں 0115 841 5568۔

Punjabi

ਇਹ ਜਾਣਕਾਰੀ ਬੱਚਿਆਂ ਦੇ ਨੌਟਿੰਘਮ ਵਿੱਚ ਸਕੂਲ ਸ਼ੁਰੂ ਕਰਨ ਦੇ ਬਾਰੇ ਹੈ; ਯੂਨੀਅਰ ਸਕੂਲ ਵਿੱਚ ਤਬਦੀਲ ਕਰਨਾ ਅਤੇ ਸੈਕੰਡਰੀ ਸਕੂਲ ਵਿੱਚ ਜਾਣਾ। ਆਪਣੇ ਬੱਚੇ ਲਈ ਸਕੂਲ ਵਿੱਚ ਥਾਂ ਮਿਲਣ ਲਈ ਅਪਲਾਈ ਕਰਨ ਲਈ ਚੰਗਾ ਹੈ ਕਿ ਹੇਠਾਂ ਲਿਖੇ ਪਤੇ ਤੇ ਆਨਲਾਈਨ ਅਪਲਾਈ ਕਰੋ

www.nottinghamcity.gov.uk/schooladmissions ਇੱਥੇ ਤੁਸੀਂ ਇਹ ਸਫ਼ਾ ਆਪਣੀ ਜ਼ਬਾਨ ਵਿੱਚ ਤਰਜਮਾ ਕਰਨ ਅਤੇ ਹੋਰ ਸਕੂਲ ਵਿੱਚ ਲੈਣ ਦੀ ਸਹੂਲਤ ਵੀ ਦੇਖ ਸਕੋਗੇ। ਜੇ ਤੁਹਾਨੂੰ (ਨਜ਼ਰ ਦੀ ਅਪਾਹਜਤਾ ਵਾਲਿਆਂ ਵਾਸਤੇ) ਬ੍ਰੇਲ ਅੱਖਰਾਂ ਵਿੱਚ ਲੈਣ ਦੀ ਲੋੜ ਹੈ ਤਾਂ ਮਿਹਰਬਾਨੀ ਕਰਕੇ ਸਾਡੇ ਨਾਲ ਇਸ ਨੰਬਰ 0115 841 5568 ਤੇ ਸੰਪਰਕ ਕਰੋ।

Arabic

هذه المعلومات هي عن الأطفال الذين يرغبون بالذهاب الى الدراسة، أو الذين ينتقلون الى المدارس الإعدادية أو الثانوية أو يبدلون مدرستهم خلال العام الدراسي في نوتنغهام. للتقدم بطلب للحصول على مكان مدرسي لطفلكم، فمن الأفضل أن تتقدموا بطلبكم عبر موقعنا الإلكتروني:

www.nottinghamcity.gov.uk/schooladmissions

حيث ستجدون إمكانية ترجمة الصفحات إلى لغتكم إضافة إلى صيغ بديلة. إذا كنتم تحتاجون إلى نسخة بصيغة برايل يرجى الاتصال بنا عبر الهاتف على 0115 841 5568.

Chinese

這信息是關於孩子們開始上學；在諾定咸轉讀小學和升讀中學。去為你的孩子申請學位，最好是在網上申請，網址 **www.nottinghamcity.gov.uk/schooladmissions** 在這裏你也可以找到把內容翻譯成你的語言和另一種格式的設備。如果你需要一份盲人點字的譯本，請致電 0115 841 5568 與我們聯絡。

Czech

Tyto informace jsou o dětech začínajících školu; přestupujících na druhý stupeň základní školy (junior school) a chodících na střední školu v Nottinghamu.

Abyste si zažádali o místo ve škole pro Vaše dítě, nejlepší je zažádat online na

www.nottinghamcity.gov.uk/schooladmissions. Také zde najdete nástroj k přeložení stránek do Vašeho jazyka a alternativních formátů.

Pokud požadujete kopii v Braillově písmu, spojte se s námi, prosím, telefonicky na čísle 0115 841 5568.

French

Ces renseignements concernent les enfants qui commencent à l'école; le transfert des enfants à une école primaire et les enfants qui vont à une école secondaire à Nottingham. Pour faire une demande d'inscription de votre enfant à une école il vaut mieux le faire en ligne: **www.nottinghamcity.gov.uk/schooladmissions**. Sur ce site vous trouverez l'option d'afficher les pages dans votre langue et en formats alternatifs. Si vous avez besoin de la version Braille veuillez nous contacter par téléphone au 0115 841 5568.

Polish

Ta informacja jest na temat dzieci rozpoczynających szkołę, przeniesieniu do szkoły junior oraz na temat pójścia do szkoły średniej w Nottingham. Aby złożyć wniosek o miejsce w szkole dla dziecka, najlepiej zrobić to online pod adresem **www.nottinghamcity.gov.uk/schooladmissions**. Na stronie znajdziesz również program tłumaczeniowy, który pozwoli przetłumaczyć strony na Twój język lub przekształcić w inny format. Jeśli potrzebujesz kopii Braille proszę o telefon na numer 0115 841 5568.

Portuguese

Esta informação é sobre as crianças em início do período escolar; ingressando em escolas do ensino primário (junior schools) e secundário (secondary schools) em Nottingham. A melhor forma para solicitação de vaga escolar de seu filho (a) é pelo site **www.nottinghamcity.gov.uk/schooladmissions**. Aqui também existe a facilidade para tradução das páginas em seu idioma e outros formatos alternativos. Caso necessite de uma cópia em Braille, favor entrar em contato conosco pelo número de telefone 0115 841 5568.

Romanian

Aceste informatii sunt pentru copiii care incep scoala; care se transfera la o scoala primara sau incep generala in Nottingham. Ca sa faceti cerere pentru un loc la scoala pentru copilul dumneavoastra cel mai bine este sa faceti asta pe Internet la **www.nottinghamcity.gov.uk/schooladmissions**. Aici veti avea si posibilitatea sa traduceti informatiile in limba dumneavoastra si alte formate. Daca aveti nevoie de o copie Braille va rog sa sunati la numarul 0115 841 5568.

Turkish

Bu bilgiler okula başlayacak çocuklar içindir; Nottingham' da ilk okula transfer olma ve orta okula giriş; çocuğunuzun okula giriş vaşvurusunu www.nottinghamcity.gov.uk/schooladmissions websitesinden yaparsanız daha iyi olur. Bu websitede kendi dilinizde tercüme edilmiş ve farklı formatlarda yazıları de bulabilirsiniz. Eğer Braille (göremeyenlar için yazı) tarzında isterseniz 0115 841 5568 telefon numarasından bize bildiriniz.

Farsi

یادتیپا هرود یاه مسردم مبل لاقیتنا. دهدی تاملول عم دننکییم عورش مسردم مبل هک ییاه هچب دروم رد مل اقم نی قیروط زاناتی یاه هچب مسردم مبل هعجارم هار نی رت مبل. مامگنتان رد هطسوت مبل هرود یاه مسردم مبل نتفر و تسه ینایاپ تیاس بیو
www.nottinghamcity.gov.uk/schooladmissions
 لی رب یابفلالکش مبل ار مل اقم نی رگا. دینک همچرت دیناوتیم زین دوخ نابز مبل ار تیاس بیو نی
 دیریگب طاب ترا 0115 841 5568 نوفلت مرامش اب، دیه اوخیم (نایان یان یابفلال)

Hindi

यह जानकारी नाटिंगम [Nottingham] में विद्यालय प्रारंभ करने वाले; जूनियर स्कूल में स्थानांतरण करने वाले और माध्यमिक विद्यालय में जाने वाले बच्चों के बारे में है। अपने बच्चे के स्कूल में नामांकन के आवेदन के लिए ऑन-लाइन www.nottinghamcity.gov.uk/schooladmissions पर आवेदन करना उचित होगा। यहां आप इस पृष्ठ का अनुवाद अपनी भाषा में और वैकल्पिक प्रारूपों में करने की सुविधा भी प्राप्त करेंगे। यदि आपको इस कॉपी की ब्रेल में आवश्यकता है तो कृपया हमसे फोन 0115 841 5568 पर संपर्क करें।

Contents

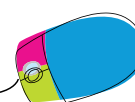
This booklet contains important information about how to apply for your child's school place. There is more information on our website at www.nottinghamcity.gov.uk/schooladmissions or you can contact the School Admissions Team on 0115 841 5568.

	Page
Apply online for a school place	3
Important dates to remember	4
Welcome	5
Contents	8
Introduction	10
Step-by-step guide to applying for a school place	11
Step 1: Understanding the admissions process 2020-2021	12
o The admissions scheme	12
o The Law	12
o Infant class sizes	13
o When will children start infant or primary school?	13
Step 2: Decide which schools to apply for	14
o What to consider when deciding about schools	14
o Special Educational Needs and Disabilities	17
o Travelling to school	18
o Oversubscribed schools	21
Step 3: Apply for a school place	25
o When to apply	25
o Requests for admission outside the normal age group	25
o How to apply	26
o Naming your schools	26
o Supplementary forms	26
o Proof of your child's home address	28
o Fair Access policy	29
Step 4: Find out the outcome of your application and what to do next	30
o How we decide which school to offer your child a place at	30
- Example of how the scheme works	31
o Accepting the place we have offered your child	32
o Your right of appeal	33
o Repeat applications	34
o Waiting lists	35
- Example of when a child is added to a waiting list	36

Applying for a school place during the school year	37
o Changing schools during the school year	37
o Moving house	37
o Moving to a different school	37
o In year waiting list - community schools	39
o In year waiting list - other schools/academies	39
Extra help for children and families	40
o School attendance	40
o Free school meals and milk	40
o School clothing allowance	41
Early Years Pupil Premium - Information for parents	42
School information	43
o Types of schools in Nottingham	43
o 14-19 Academies, University Technology Colleges & Studio Schools	44
o Post 16 Education	46
o Terms and holidays – community schools	47
o Directory of nursery and primary schools in Nottingham City	48
o Maps of schools in Nottingham City	58
o Directory of secondary schools in Nottingham City	66
o Admissions criteria for community primary schools	69-70
Nottingham City Behaviour Charter	71
Useful information and contacts	73
o Including Elective Home Education	
Checklist	Back cover

Glossary

LA:	Local Authority
CE:	Church of England
DfE:	Department for Education
Ofsted:	Office for Standards in Education, Children's Services and Skills
Parent or carer:	A person who is legally responsible for caring for a child
SEND:	Special educational needs and disabilities
VA:	Voluntary academy



Introduction

Dear parents and carers,

Schools in Nottingham are exciting places where our pupils come to learn and develop. We're proud that we have inspiring teachers and support staff working in modern buildings with state-of-the-art equipment.

But it's your children who are our strongest asset – they will be the ones to shape the future of the city, and further afield, for generations to come.

Here in Nottingham, we treasure and invest in these assets. We strive to ensure that every parent has the option of a good-quality school close to home, and every child receives the best possible education.

Parents and carers remain our best partners. They all want the very best for their child, and so do we.

Our schools are great places for learning, where children and young people are valued, nurtured and encouraged.

Every morning that a child comes into school represents another opportunity to learn something new or experience something different. In Nottingham we aim to provide the right environment in our classrooms for their creativity to flourish.

We're making positive strides on improving attendance and attainment – more children are achieving good test and exam results in Ofsted rated Good and Outstanding schools. We want to give them a platform to be the best they can be, and ensure they leave having reached their full potential and ready to make their mark on the world.

Although the Council doesn't have direct responsibility for academies, we take a keen interest in all schools, work in close partnership with them and champion Nottingham children regardless of the school they attend.

Our pledge is that, working with you, we will offer your children exciting learning experiences and opportunities. We promise to work tirelessly to achieve the best possible outcomes for every single child in Nottingham.

Yours truly,



**Cllr Neghat Khan,
Portfolio Holder for Early
Years, Education and
Employment**



**Nicholas Lee
Director of Education
Services**



Step-by-step guide to applying for a school place

This guide sets out what you need to do to apply for a school place for your child, whether they are starting school for the first time or moving from one school to another.

Step 1:

Understand the admissions process; read pages 12 and 13 or visit our website at www.nottinghamcity.gov.uk/schooladmissions



Step 2:

Decide which schools to apply for; read pages 14 to 23 or visit our website at www.nottinghamcity.gov.uk/schooladmissions, which gives you links to the websites of individual schools, Ofsted and the Department for Education (DfE).



Step 3:

Apply for a school place. This is easier to do online (read pages 25 to 29). If you do not have access to the internet you can apply by filling in a paper application form. Remember to use all your school preferences to increase your chances of getting a school you want your child to go to.



Step 4:

Find out the outcome of your application, including your rights of appeal (read pages 30 to 36).

We are here to help you. For more information about applying for a school place, contact us in one of the following ways:

-  **By phone:** 0115 841 5568
-  **By email:** schooladmissions@nottinghamcity.gov.uk
-  **Online:** www.nottinghamcity.gov.uk/schooladmissions
-  **By post:**
The School Admissions Team
LH Box 14
Loxley House
Station Street
Nottingham
NG2 3NG

Step 1

Understanding the admissions process 2020-2021

The aim of the co-ordinated admissions scheme is to make the process easier by allowing parents and carers to list their preferences in order of priority, on the online or paper application form.

You do not apply direct to any school, unless it is a private or independent school. The scheme also makes sure that every parent or carer living in Nottingham city who has applied for a school place for their child by the closing date receives not more than one offer of a school place by Nottingham City Council on the national offer day. You can apply easily online at www.nottinghamcity.gov.uk/e-admissions

A paper form to fill in yourself is available on request.

If you do not live in Nottingham city, you must contact your home local authority (the local authority for where you live) to apply for a school place, even if you want to apply for a Nottingham city school.

- **Applications for infant, primary or junior school:**

If you live in Nottingham city and your child will be starting infant or primary school or moving up from infant to junior school in the 2020-2021 school year, you must apply to us for a school place through the co-ordinated admissions scheme. In order of priority, list **up to six school preferences** for infant and primary schools, and **up to three school preferences** for junior schools, including schools in other local authority areas.

- **Applications for secondary schools:**

If your child will be going to secondary school in September 2020, you must apply for a school place through the co-ordinated admissions scheme. All applications from people living in Nottingham city for places in year 7 at secondary schools in the city or Nottinghamshire are co-ordinated by the local authority. List **up to four school preferences**, in order of priority, including schools in other local authority areas.

The law

You have a legal right to tell us which school you would prefer your child to go to. This is not the same as having a choice and automatically getting a place for your child at that school. However, most children will be offered a place at a school listed as a preference on their application, unless their parent/carer has not used all their preferences.

We provide you with information to help you apply online and, if you need it, individual advice on the admissions process, a guide and a form. We will always offer your child a place at the school you listed highest in your preferences if there is a place available. In some cases, a school receives more applications than it has places available. If that happens, we will offer places according to each school's admissions criteria (see pages 69 to 70 for community schools and the separate Appendices 1 and 2 for other schools/academies).



Admissions authorities must manage school admissions in line with the School Standards and Framework Act 1998, the Education and Inspections Act 2006 and the School Admissions Code. All parents and carers must fill in an application to ask for a place at the school they would like their child to go to, even if it is the catchment school (the school your child would be most likely to be offered a place at considering your home address).

The way in which school places are offered must be clear and fair. Make sure you read the admissions criteria at the back of this booklet and in the separate Appendices 1 and 2 to understand how they will apply to your child and your application.

Infant class sizes

There are rules relating to infant class sizes, which say that no infant class may contain more than 30 pupils with a single qualified teacher. We cannot offer your child a place at an infant/primary school if this would mean there would be more than 30 pupils in that class.

When will children start infant or primary school?

All children whose fifth birthday is between 1 September 2020 and 31 August 2021 will start school in September 2020, even though they may not yet be five years old. You will be able to delay your child starting school if you feel they are not ready for full-time school in September. The law says all children must receive full-time education no later than the start of the term after their fifth birthday. This is known as compulsory school age. Parents and carers can ask the head teacher if they would like their child to go to school part-time until they reach compulsory school age.

For admission purposes only, term dates are as follows:

Autumn term:

1 September 2020 to 31 December 2020

Spring term:

1 January 2021 to 31 March 2021

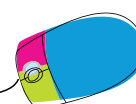
Summer term:

1 April 2021 to 31 August 2021

If you would like to delay your child starting school until they reach compulsory school age, you should arrange this with the head teacher of the school. You will still need to apply for a school place by the closing date, i.e. 15 January 2020.

However, if your child's fifth birthday falls between 1 April 2021 and 31 August 2021, delaying your child starting school until they reach compulsory school age would result in your child starting school in a different admission year and missing out on their reception year. In this case, your child could not be given a reception place at the school during the 2020-2021 school year and you would have to apply for a place in year 1 during the summer term 2021. **If you are thinking of this option please contact us for advice.**

Parents/carers may request admission for their child outside their normal age group – see page 25 for further details.



Step 2

Decide which schools to apply for

Before you list your school preferences on your application, you should consider which schools you would like your child to go to and whether your child has a realistic chance of getting a place at these schools.

What to consider when deciding about schools

There is no substitute for seeing things yourself.

The best way to decide how well a school might suit your child is to go and see it for yourself. That way you are not relying on rumours that are often incorrect and out of date. Most infant, junior and primary schools are happy to arrange a time for you to visit them.

Most secondary schools hold open evenings or sessions, details of which can be found on our website at www.nottinghamcity.gov.uk/schooladmissions. Alternatively you can contact the schools you are interested in to find out details of these sessions. We believe this provides a very good opportunity for you to

get the feel of schools and we strongly encourage you to attend. Contact details of all secondary schools are listed on pages 66 to 68.

- **Get a copy of the schools' prospectuses**, by contacting each individual school. Each prospectus contains information about the values of the school, the curriculum, and details of pupils' achievements. It also contains information about the school's dress code, discipline policy and other general information.
- **If your child has special educational needs and disabilities (SEND)** can these be met at a mainstream school? If not you will need the support of the SEND team (see page 17 for more information).
- **If your child has a physical disability** find out if your preferred school(s) is suitable as not all our school buildings are currently able to provide full access for disabled pupils (see page 17).
- **Think about how your child will get to and from school** - it is your responsibility to make sure your child can get to and from school. See pages 18 to 20 for more details on travelling to school.
- The best way to assess your child's chances of getting a place at a school you prefer is to **study that school's admissions criteria** and check which schools were oversubscribed (had more applications for places than they had places available) last year. For Nottingham city schools, see pages 21 to 23.
- Places in Nottingham city primary community schools will be **offered to applicants who live in the school's catchment area first** (see the admissions criteria on pages 69 to 70).
- If you want to apply for a place at a school that was oversubscribed last year, but you do not live in the catchment area for that particular school, **find out how many children who lived outside the catchment area were offered a place last year**. For Nottingham city community schools, look at the table on page 21. The further away from the school you live, the less likely you are to be offered a place.

- **Some schools have specialist places** (for example performing arts or technology) and your child may need to take a test if you are applying for one of these places. Ask yourself whether your child has an aptitude for the subject being tested.

The only Nottingham city school that has specialist places available for pupils who have an aptitude for technology is Bluecoat Aspley Academy. If you name this school as a preference and you would like your child to be considered for one of these specialist places, they will have to sit an aptitude test at the academy during October 2018 and **you must contact the academy directly by 30 September 2019 to arrange this.** If you do not, your child cannot be considered for a technology place.

Pupils who are offered a place under the specialist criterion at Bluecoat Aspley Academy will still follow the same curriculum as all other pupils in the academy.

What happens next?

If your child sat the aptitude test you will be sent a letter by Bluecoat Aspley

Academy prior to the closing date for applications (i.e. 31 October 2019) to advise you of either the outcome or ranking of your child's test.

If the outcome of the technology test is that your child has passed the test or has a high ranking, this does not mean they will be offered a technology place at the academy. It means they will be considered for a technology place along with other applicants in this criterion, provided you have named the school in your application and ticked the Specialist Technology box on that application.

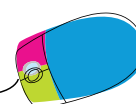
- **We strongly recommend that you use all of your preferences** and do not name a school more than once (if you do this it will count as only one preference and you will have lost the opportunity to name other schools). Naming only one school does not increase your chances of getting a place at that school. If you do not use all your school preferences and it is not possible to offer a place at your preferred school(s) your child may be offered a place at a school you do not want.

An alternative offer may be made when it is not possible to offer a place at any of the schools

named on the parent's application, so a place is offered at an alternative school that still has places available.

- If you are considering applying for a place at Dunkirk Primary or Heathfield Primary, you cannot apply for a particular site. As these schools are run from two sites, if your child is offered a place you will have the opportunity to discuss which site you prefer with senior staff at the relevant school or academy.

We recommend that at least one of the schools you list as a preference on your application form should be a school where you are sure that your child will meet one of the higher admissions criteria. (Please see pages 69 to 70 and the separate Appendices 1 and 2 for the admissions criteria.) This is likely to be your catchment school. Most parents and carers are happy for their child to go to their catchment school, and this is the school where your child will be given priority for a place, so **we strongly recommend** you consider listing it as one of your preferences. If you do not name your catchment school on your application, there may be no places left at that school if you decide



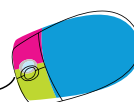
to apply for a place there later.

Make sure you fill in your online application or return a common application form (and any supplementary forms you are asked to fill in if you are applying for a church school) by the closing date.

Please consider your preferences for schools very carefully before filling in your application, as it will not be possible to change the order of your preferences at a later date and it may not be possible to offer your child a place at a different school if you change your mind after the closing date.

If your preferences are not realistic, we may not offer your child a place at any of your preferred schools and we may offer your child a place at a different school instead.

There is no guarantee of a place at your catchment school as it will depend on the number of applications we receive and the number of places available.



Special educational needs and disabilities (SEND)

How are special needs identified?

Some children's special educational needs and disabilities are identified at a very early age. Health professionals, early years settings and education support services will work together to share information and provide support for these children.

When children start to receive a formal education, the staff working with them (SENDCO, teachers and teaching assistants) are responsible for identifying any children with special educational needs and disabilities. They will also make arrangements to meet those needs.

By the time children approach the move to secondary school, information about their special educational needs and disabilities is generally well known and understood and the relevant schools make robust transition arrangements in preparation for the move.

However, if your child has special educational needs and disabilities, the move from primary to secondary school should always be supported by the special educational needs and disabilities co-ordinator (SENDCO) or another member of staff at your child's junior or primary school and the SENDCO at the secondary school working together to ensure that the transition goes ahead smoothly.

What is the local authority policy?

Nottingham City Council's local policies follow national policies and guidelines in the great majority of cases, children with special educational needs and disabilities (SEND) will have their needs effectively met in mainstream schools. Only a very small minority will require a special school.

In a number of mainstream schools, resources are in place to meet certain types of special educational needs. This is called **focus provision**.

Special schools cater for children with very severe and complicated needs. Children who go to special schools have an Education, Health and Care Plan (EHC). Their parents or carers will have

chosen for them to go to a special school rather than a mainstream school and this will have been agreed by the SEN Service.

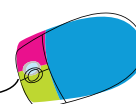
Our special schools are developing new ways of linking with mainstream schools.

What should you do if your child has a physical disability?

If your child has a physical disability, needs help moving around school, or needs some other physical support, it is helpful to think at an early stage about the schools your child is likely to go to.

We are trying to adapt as many of our mainstream schools as possible to meet the needs of disabled pupils. However, not all our schools' buildings are currently suitable and there are some schools where it will not be possible to provide full access for disabled pupils.

You can get more information about education for children with special educational needs and disabilities from the Special Educational Needs Service on **0115 876 4300** or email **special.needs@nottinghamcity.gov.uk** or contact the Ask Us Service (formerly Parent



Partnership) on
0115 804 1740.

The Ask Us Service works with parents and carers of all pre-school and school-aged children with special educational needs and disabilities. There are more contact details for the Ask Us Service on page 74, and you can find more information on their website at www.ppsnotts.org.uk.

Travelling to school

We would prefer all children to walk or cycle from home to school to encourage exercise and promote children's health and well-being. We do not guarantee to provide free travel to school and you should take this into account when choosing your school. Please see the conditions below for free travel to school.

- If a pupil's address does not have a catchment school, then under the Home to School Transport Policy the nearest school to the pupils address will be classed as their designated catchment school for school transport purposes.
- A walking distance measurement carried out by the School Transport team is a measurement taken from the pupils home address to their place of education using any walkable public right of way or access.

Infant, junior and primary schools

Most children who go to their catchment primary school will live well within walking distance and so do not qualify for help with transport costs.

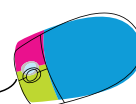
You are responsible for making sure your children can get to and from school and for paying any transport costs involved. However, help with travel costs may be available to eligible pupils who go to their catchment school or a nearer available school and live further away from the school than the maximum walking distance.

The maximum walking distances (measured using computerised software) for children at primary school are as follows:

- Two miles for pupils aged 5 to 7
- Three miles for pupils aged 8 to 11
- Two miles for pupils aged 8 to 11 from low-income families

If we refuse your child a place at their catchment school and they go to the next nearest school, this becomes their catchment school for the purpose of assessing whether they qualify for help with transport costs.

Pupils from families on a low income (those families that are entitled to free school meals or receive the maximum level of Working Tax Credit) may be entitled to help with travel costs to and from school, if they go to their catchment school or the nearest available primary school to their home, and this school is at **least two miles away** from their home (walking distance). You will



need to provide evidence to show that you are entitled to help.

If your child qualifies for free transport because you are on a low income, they will only receive free transport for this school year. You must apply again for future school years. If there is a change in personal circumstances that means you are no longer considered to be on a low income, we may withdraw your child's entitlement to free transport for the following school year.

Secondary school transport

Where walking or cycling is not an option, we would prefer pupils to use public transport to and from school. Bus and tram services pass near to every secondary school in Nottingham city and special tickets for pupils are available from most bus operators.

You are responsible for making sure your children can get to and from school and for paying any transport costs involved.

However, in a few cases pupils may be entitled to a free bus pass if:

- they go to their catchment school or the nearest available school to their home; and
- the walking route is over 3 miles, or
- they are from a low-income family and are

going to one of their three nearest schools which is over two miles away from their home (walking distance).

For more information please call the Children and Adults Transport Team on **0115 876 5049** or email them at **transport.team@nottinghamcity.gov.uk**

Or you can visit their website at www.nottinghamcity.gov.uk/school_transport to see the latest copy of the full policy.

Faith school transport

Nottingham City Council does not have a statutory duty to provide free transport for pupils who go to their allocated or nearest faith primary or secondary school. However, discretionary free travel may be considered for pupils if:

- the pupil is from a family on a low income (we will need to see evidence of this) and goes to their designated school and the school is more than two miles' walking distance and less than 15 miles' driving distance from home (driving distance is the shortest available route by road).

As well as the points listed above, we may consider providing free school travel to pupils who go to their

designated or nearest faith or single-sex secondary school because of their religion or belief if:

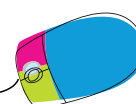
- the family have more than one school-aged child at the nearest faith or single-sex secondary school because of their religion or belief and the school is over two miles' walking distance from the home, and the family are receiving Working Tax Credit where the reduction due to income is less than the family's yearly school travel costs.

Children with special transport needs

If you are the parent or carer of a child with special educational needs who has a special transport need, you may qualify for help with your child's transport costs to and from school. Most children with special educational needs do not have special transport needs.

Children may have special transport needs if they have:

- complex needs or disabilities that place them or others at a serious risk of danger during the journey to and from school; or
- a mobility difficulty or medical condition which means they need to travel to school in a specialised vehicle.



Younger children do not usually travel to school on their own and so would not normally be eligible for help with travel costs unless they have significant special educational needs. If we agree that your child has a special transport need, we may provide help with travel in one of a variety of ways, for example, Independent Travel Training, a bus pass, a mileage allowance, minibus or in exceptional cases a taxi.

If we provide help with travel and your child usually travels on their own, we may ask you to travel with them.

Another form of travel assistance is Independent Travel Training where your child would be supported by an Independent Travel Trainer or their school to learn to

travel independently to and from school and would be provided with a bus pass to enable them to do so.

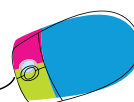
If there is a group of children travelling together, we will usually provide someone to travel with them dependent on age and need. If you decide to send your child to a school that is further away than the nearest appropriate school with available places, we will not provide help with travel.

We will continue to review your child's special transport needs and any help we provide is likely to change over time, for example, as your child gets older we may help them to learn

If your child qualifies for free transport because you are on a low income, they will only receive free transport for this school year.

independent travel skills and provide training and support so they can use public transport and travel independently.

If you think your child may have a special transport need, please contact the Special Educational Needs and Disabilities Team on **0115 876 4300** or email **special.needs@nottinghamcity.gov.uk**



Oversubscribed schools

Oversubscribed schools in reception year in 2019/2020

Table 1 lists the city community primary schools which were oversubscribed in reception year with applications received by the closing date in the 2019/2020 school year. The number of applications offered (in yellow) or refused (in blue) for each school is indicated along with the criterion under which they were considered. Proof of residence may be required for these schools (see page 28). These figures will further increase as a result of additional late applications received and refused after the closing date. Please note that these schools and a number of other schools have also been oversubscribed in other year groups during the 2019/2020 school year.

Table 1 - 2019/20 community primary schools

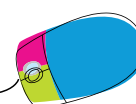
School	Admission number	Total no. of applications received by closing date	Places offered in each criterion* (total equals the admission number)							Total number refused at 16 April 2019	No. refused because they were offered a school they ranked higher than this school	No. refused because the school was oversubscribed	Number refused in each criterion* (total equals the number refused because the school was oversubscribed)				
			Education, Health & Care Plan	1	2	3	4	5	Medical / social grounds				1	2	3	4	5
Cantrell Primary	60	93	0	0	20	19	13	8	0	33	32	1	0	0	0	0	1
Carrington Primary	30	153	0	0	11	17	2	0	0	123	91	32	0	0	0	3	29
Fernwood	150	329	1	0	53	75	12	9	0	179	130	49	0	0	0	0	49
Greenfields Primary	30	83	0	0	17	13	0	0	0	53	42	11	0	0	1	4	6
Haydn Primary	60	226	0	0	12	28	10	10	0	166	118	48	0	0	0	0	48
Heathfield Primary	100	183	0	0	18	16	23	43	0	83	78	5	0	0	0	0	5
Mellers Primary	60	118	0	0	13	14	18	15	0	58	45	13	0	0	0	0	13
Middleton Primary	90	227	0	0	24	33	3	30	0	137	126	11	0	0	0	0	11
Robin Hood Primary	60	133	0	0	16	17	10	17	0	73	67	6	0	0	0	0	6
Welbeck Primary	45	90	0	0	11	21	5	8	0	45	40	5	0	0	0	0	5

***SUMMARY OF CRITERIA:**

Criterion 1 – Looked After / Previously Looked After children	Criterion 4 – Living outside catchment area, brother or sister attending the school at the time of admission	Medical/Social – Where the local authority is satisfied that a pupil has exceptional medical, mobility or social grounds for attending this school and the application has been supported by a statement in writing from a doctor, social worker or other relevant professional. For full details of the criteria, please see pages 69 to 70.
Criterion 2 – Living in catchment area, brother or sister attending the school at the time of admission	Criterion 5 – Living outside catchment area	
Criterion 3 – Living in catchment area		

The table below lists the academies in Nottingham city which were oversubscribed at the closing date in reception year in the 2019/2020 school year.

Primary School / Academy	Admission number	Total no. of applications received by closing date	Total number refused at 16 April 2019	No. refused because they were offered a school they ranked higher than this school	No. refused because the school was oversubscribed
Blue Bell Hill Academy	60	127	67	51	16
Bluecoat Primary Academy	60	172	112	86	26
Bulwell St Mary's	30	72	42	34	8
Burford Primary	30	67	38	29	9
Edale Rise Primary	30	94	64	50	14
Edna G Olds Academy	30	77	47	31	16
Old Basford School	60	161	101	81	20
Our Lady and St Edwards	30	75	45	39	6
Our Lady of Perpetual Succour	30	89	59	45	14
Radford Primary	30	77	47	36	11
Sneinton St Stephen's CofE Primary	30	77	47	36	11
South Wilford Endowed CofE Primary	60	107	47	46	1
St Margaret Clitherow	30	65	35	29	6
St Mary's Catholic VA	30	127	97	74	23
St Teresa's Catholic VA	60	210	151	91	60
Warren Primary Academy	30	64	34	31	3
William Booth Primary	30	82	52	43	9



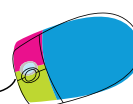
Oversubscribed secondary schools in year 7 in 2019/2020

The table below lists the academies in Nottingham city which were oversubscribed at the closing date in year 7 in the 2019/2020 school year.

Secondary School / Academy	Admission number	Total no. of applications received by closing date	Total number refused at 1 March 2019	No. refused because they were offered a school they ranked higher than this school	No. refused because the school was oversubscribed
Bluecoat Aspley Academy	178*	983	805	429	376
Bluecoat Beechdale Academy	180	324	144	137	7
Bluecoat Wollaton Academy	149**	692	543	318	225
Bulwell Academy	210	336	126	113	13
Emmanuel School	205	488	283	257	26
Fernwood School	210	539	329	191	138
Nottingham Girls' Academy	161	317	153	148	5
Nottingham Free School	115	446	331	237	94
NUAST	120	490	370	212	158
Oakwood Academy	150	324	174	164	10
Trinity Catholic School	165	616	451	281	170

* PAN reduced by 2 due to pupils with an EHCP

** PAN reduced by 1 due to pupil with an EHCP





Step 3:

Apply for a school place

When to apply

The deadlines for applying for a school place are as follows:

31 October 2019 - secondary school place (apply between 6 September 2019 and 31 October 2019)

15 January 2020 - infant or junior or primary school place (apply between 15 November 2019 and 15 January 2020)

If we receive your application after the closing date, this will reduce your chances of getting a place at your preferred school, particularly if it is popular. If your child already goes to a primary school and is in year 2, they will stay at this school until they are 11, and this information does not apply to you.

Requests for admission outside the normal age group

- Parents/carers may request admission for their child outside their normal age group. In general, it is considered that children should be educated in their normal age group, with the curriculum differentiated as appropriate, and they should only be educated out of their normal age

group in very limited circumstances.

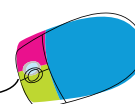
- Parents are required to make an application for their child's normal age group at the usual time (i.e. by 31 October for secondary and by 15 January for primary) but should also submit a request for admission out of the normal age group at the same time.
- The relevant admission authority will be required to make a decision on which age group the child should be admitted to. One admission authority is not required to honour the decision made by another admission authority on admission out of the normal age group.
- If the request is agreed by all admission authorities, the application for the normal age group may be withdrawn before a place is offered. Parents will then need to make a new application for reception/Foundation 2 as part of the main admissions round for the following year. The application will then be considered alongside other applications received and determined against the admission arrangements.

You'll need to make a note of your username and password to apply online.

- If the request to be admitted out of age group is refused, the parent must decide whether to accept the offer of a place for the normal age group, or to refuse it.

A copy of the Council's accelerated/delayed school admissions policy can be found at

www.nottinghamcity.gov.uk/schooladmissions.



How to apply

The quickest and easiest way to apply for a school place is to go online at www.nottinghamcity.gov.uk/e-admissions and follow the instructions.

You will need a valid email address to apply online. It is completely safe and secure to apply online, you can make changes to your application right up to the time of the closing date and we'll send you an email to confirm that we have received your application. If you do not have an email account you'll need to set one up or visit www.go-on.co.uk and follow the step-by-step instructions.

If you don't have access to the internet, you can use the computers at most Nottingham city libraries and children's centres. Some schools may also allow you to use their computers to apply.

A paper form to fill in yourself is available on request.

Naming your schools

Fill in your application and list up to:

- six **infant or primary** schools; or
- three **junior** schools; or
- four **secondary** schools.

Give us details (including the date of birth) of any brothers or sisters who already go to the schools you have listed as preferences or a linked infant or junior school and who will still be on roll at the schools in September 2020.

Having a place at a nursery school does not guarantee your child a place in the linked infant or primary school. You still need to apply for a place at the school on the online or paper application form.

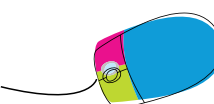
If you are applying for a place at **Bluecoat Aspley Academy**, please confirm whether you are applying for one of the 'specialist' technology places. You must contact the academy directly by 30 September 2019 to arrange for your child to sit the technology test. If you do not, your child cannot be considered for a technology place.

Supplementary forms

If you are applying for a place at a Nottingham city church school/academy, you may also need to fill in a supplementary form.

You can get these forms from the relevant school/academy or at www.nottinghamcity.gov.uk/schooladmissions. Please remember that the supplementary form is **not** a valid application on its own – you must also fill in an online or paper application.

Send your supplementary form straight to the church school/academy you are applying for, do not send it to us. If you are applying for a voluntary-aided school, trust school, foundation school or academy outside Nottingham city, you need to contact that school to check if you need to fill in a supplementary form.



Sending your application to us

When you apply online, make sure you click 'submit' at the end of the application.

If you fill in a paper application, sign and date the form and return it by the closing date to:

The School Admissions Team
LH Box 14
Loxley House
Station Street
Nottingham
NG2 3NG

Acknowledgement

If you apply online, we will send you an email straight away telling you we have received your application.

If you apply by filling in a paper form, we will send you a reply in writing when we have received it. If you do not hear from us within 10 days, call us on 0115 841 5568.

If you do not get a reply letter it means we have not received your application form or maybe we do not have your correct address. We will only consider your application if we have sent you an acknowledgement, even if you have delivered

it by hand or sent it by recorded or special delivery (proof of postage is **not** proof that we received your form).

If you do not get a reply letter at least one week before the closing date, it is your responsibility to follow this up and call us on 0115 841 5568.

If we have not received your application and you make another application after the closing date, we will consider this to be a late application.

This will reduce your chances of your child being offered a place at your preferred school.

Nursery applications

If you want to apply for a nursery school place, you need to contact the head teacher of the nursery. For more information, please call the Families Information Service on Freephone 0800 458 4114 (calls from mobile phones may be charged at the network provider's standard rate).

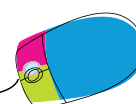
Pupil's home address

We consider a pupil's home address to be the residential property where they are living which is their **only or main home** on the closing date for applications and which their parent, carer or guardian owns, leases or rents under a lease or written rental agreement.

If more than one person has parental responsibility for the child and those people live in separate homes, we will consider the child's home address to be the property at which they live for most of the week (this includes weekends as well as weekdays).

If the child lives at two separate homes for an equal length of time, we will consider their home address to be the address named on the Child Benefit letter. If you live or move into the catchment area of a school that you have listed as a preference and which has a history of being oversubscribed (see pages 21 to 23 for details of oversubscribed schools in 2019/2020), we may need documents from you to prove that you live in the catchment area.

We will accept **one** piece of evidence from **each** of the



three categories listed below as proof of your home address. This is because we give priority to pupils who live within the catchment area and we need to avoid offering places to people who have claimed their child lives in the catchment area of a school when in fact they do not. Please send photocopies of the documents listed below, do not send originals.

Proof of your child's home address

If you do not provide proof of your child's home address when we ask for it, we will be unable to consider your application as being from within the catchment area and it may reduce your child's chance of getting a place at their catchment school.

Category 1

- A copy of a letter from the Child Benefit Agency showing the child's name and home address; or
- A copy of a letter from the Child Tax Credit Agency showing the child's name and home address; or
- A copy of your child's bank statement, showing the child's name and address; or

- An NHS letter showing your child's name and address.

Category 2

- A copy of your tenancy agreement; or
- A copy of a solicitor's letter confirming the completion of a property you have bought; or
- A copy of a council tax bill (we will only accept this if you have lived in the catchment area for over six months).

Category 3

- A copy of your bank statement dated within the last six months; or
- A copy of a utility bill (gas, water or electricity bill, but not mobile phone bill) dated within the last six months.

We will not accept informal living arrangements with family and friends unless there are exceptional circumstances (in which case we will need to see proof of the exceptional circumstances).

Fraudulent applications

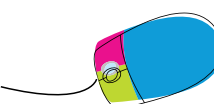
We take the issue of fraudulent applications very seriously. If we receive any information alleging that an application has

been made fraudulently we will investigate and will require parents to provide additional proof of address. If we find out that we have offered your child a place based on incorrect, fraudulent or misleading information we will withdraw that offer of a place.

Late applications

If we receive your application or any changes to your preferences after the closing date, we will deal with your application after 2 March 2020 (if your application is for a place at a secondary school) or after 16 April 2020 (if your application is for a place at an infant, junior or primary school). **This may mean that we cannot offer your child a place at one of your preferred schools.**

Under exceptional circumstances, we (and other admissions authorities) may be willing to accept applications which we receive late but before **5pm on 29 November 2019** (for applications for a place at a secondary school) or **10 February 2020** (for applications for a place at an infant, junior or primary school).



Examples of exceptional circumstances include if the application is from:

- a family who are returning from living abroad;
- a single parent who has been ill for some time; or
- a family who is moving into Nottingham from another area.

If you think there are exceptional circumstances which mean we should accept a late application from you, you must attach written details to your application form. We will consider each case individually. Please note that where we do accept a late application under exceptional circumstances, we will still consider your child's home address to be where they were living at the closing date for applications.

If you send us your application before the closing date and you then send in a late application for different schools, because you are still applying for a school place in the same academic year, we will add these to the end of your first list of schools. For example, if you applied for six primary schools before the closing date and then applied for three different primary schools after the closing date, they would be your seventh, eighth and ninth preferences. We will deal with these after the national offer date.

Fair access policy

Under the 2014 School Admissions Code, all local authorities must have a fair access policy to make sure they offer a school place quickly to children and young people who are vulnerable or considered hard to place in school. The School Admissions Code says that all schools and

academies must take part in their local authority's fair access policy, even if they are already full to make sure that all schools in an area have their fair share of vulnerable and challenging pupils.

Admissions authorities check each application to decide if it should be considered through the fair access policy. For full details of our fair access policy and the categories of children it covers, please visit www.nottinghamcity.gov.uk/schooladmissions

Please remember that the fair access policy does not apply to year 6 pupils moving up to secondary school in September.

Help and advice

If you would like any help or advice about applying for a school place, please call us on 0115 841 5568. Or, for secondary school applications, you can also call the Choice Advice Service on 0800 458 4114. (Calls from mobile phones may be charged at the network provider's standard rate.)

Under the 2014 School Admissions Code, all local authorities must have a fair access policy



Step 4:

Find out the outcome of your application and what to do next

How we decide which school to offer your child a place at

Each school has a published admission number, which is the number of places it has available in the intake year (reception year for infant and primary schools and year 7 for secondary schools). We show the admission number for each school in the schools directory later in this booklet.

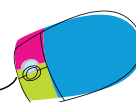
After the closing date, we will treat your applications for each of the schools you have listed as separate applications and will consider them all equally. We will process all requests for places at Nottingham city community schools. If you have listed any other city schools as preferences, or schools in another local authority, we will send details of your application to the relevant admissions authority for them to consider against the school's admission criteria.

They will send us their decision. We will not tell the other admissions authorities the order you have ranked your preferences in during the decision-making process. If a school receives more applications than it has places available, this means the school is oversubscribed and places are offered using the school's admissions criteria. For a full list of the criteria for each type of school, see pages 69 to 70 and separate appendices 1 and 2. If there are too many applications in a single criterion for city community schools, we will give priority to those who live closest to the school, measured (using a computerised geographical information system) in a straight line from a point in the school grounds to a point in your home (as the crow flies).

We will offer only one school place to your child as follows:

- a) If it is possible to offer your child a place at only one of the schools you listed as preferences, we will offer them a place at that school.
- b) If it is possible to offer your child a place at two or more of the schools you listed as preferences, we will offer them a place at the school you ranked highest from the schools we could offer them a place at.
- c) It is possible that we may not be able to offer your child a place at any of the schools you have named, although this is less likely if you have included your catchment school as one of your preferences.

You do not have to name your catchment school if you do not want your child to go to that school. However, you should remember that if it is not possible for us to offer a place for your child at any of your preferred schools, the only schools with places available at the end of the admissions process may be some distance away from your home and you may be responsible for the cost of getting your child to school (see 'Travelling to school' on page 18).



If it is not possible to offer your child a place at any of the schools you listed as preferences the local authority will offer your child a place at your catchment community school (if there is one for your child's address) if places are still available. If there are no places available, a place will be offered at the next nearest Nottingham city academy where the governing body has authorised the local authority to make offers on their behalf, if this is the

nearest school and if places are available.

For secondary school applications, where it's not possible to offer your child a place at any of your preferred schools it may not always be possible to offer your child an alternative school place. Where possible a place may be offered at the next nearest Nottingham city community school or academy as detailed above, however any such offer may not be made

until May or June 2019. This is why it is important to ensure that at least one of your preferences is for a school where your child meets one of the higher admission criteria for that school.

If you have not applied for a school place we will only offer your child a place after we have offered places to people who have made an application.

Here's an example of how the scheme works for a child called John

Rank	School preference	John's details	Outcome of each request	Place offered	Placed on the waiting list
1	Catholic School A	Not a baptised Catholic	No	No	Yes
2	School B	Lives in catchment area	Yes	Yes	Does not apply
3	School C	Does not live in catchment area	Yes	No	No
4	School D	Does not live in catchment area	Yes	No	No
5	School E	Does not live in catchment area	Yes	No	No
6	School F	Does not live in catchment area	No	No	No

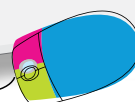
Please remember that we can only offer one place to your child. For more information about waiting lists, please see page 35.

- Catholic School A is John's parents' first preference, but it is oversubscribed (it receives more applications than it has places available) and John is not a baptised Catholic.
- John does not live in the catchment area of School C, School D or School E but as the schools are not oversubscribed with pupils from within their catchment areas, it is possible to offer a number of places to pupils from outside the catchment areas. We will offer places to those living closest to the schools first.
- John does not live in the catchment area of School F and the school is oversubscribed.
- John's parents had ranked School B higher than Schools C, D and E, so we would offer John a place at School B and not School C, D or E.

Accepting the place we have offered your child

If you have applied online, you will receive an email from us on the offer day (or next working day) to tell you the outcome of your application. Parents and carers who apply using a paper application form will be sent a letter to tell them the outcome of their applications on the offer day (or next working day). These letters will arrive in the post 2-3 days after the offer day. Please wait until you receive your decision email or letter - do not phone us for your decision as we cannot give decisions over the phone.

You need to let us know whether or not you want to accept the school place we have offered to your child. You can do this **online** or by contacting us on **0115 841 5568**, by email at **schooladmissions@nottinghamcity.gov.uk** or by **filling in the acceptance slip** enclosed with your decision letter and returning it to us within 14 days. **If you do not accept the place within 14 days, we may withdraw the place and offer it to another pupil.**



Your right of appeal

If we turn down your application for a place at a community school, you can appeal to an independent appeal panel. This is dealt with by the School Appeals Team in our Democratic Services Department, who are independent of Children and Adults.

Appeals against infant class sizes

We may turn down your application for a place in an infant class because the class size would go above 30 if any more pupils were accepted. Appeal panels can only grant a place in **very limited circumstances**. Your appeal is only likely to be successful if the panel is satisfied that either:

- we would have offered your child a place if we had followed the published admissions arrangements properly; or
- the decision to refuse your child a place was not one which a reasonable admissions authority would have made in the same circumstances. The refusal letter/email we send you will tell you if we have refused your child a place because of infant class size.

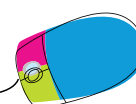
All appeals

If you decide to appeal, you can complete an appeal form online at www.nottinghamcity.gov.uk/schooladmissions, where you will also find information explaining the procedure for appealing and what will happen at the appeal. Alternatively, you can ask for a copy of the information and/or appeal form by phoning 0115 841 5568.

Appeals for applications made on time (by the closing date of 31 October 2019) for places in year 7 are likely to be heard during May and June 2020 and, in any event, no later than 16 June 2020.

Appeals for applications made on time (by the closing date of 15 January 2020) for places in reception year are likely to be heard during June and July 2020 and, in any event, no later than 20 July 2020.

Appeals for late applications for places in year 7 and reception and for applications into other year groups will be heard within 30 school days of being made.



The School Appeals Team will tell you when the appeal panel will hear your appeal and will send you detailed guidance notes about the appeal hearing.

You can contact the School Appeals Team on **0115 876 4302** or email them at **school.appeals@nottinghamcity.gov.uk**

You can also contact the Children's Legal Centre who provide free legal information, advice and representation to children, their families and carers on state education, including admissions appeals. You can contact them by calling **0845 345 4345**, Mon-Fri 9.00am-8.00pm or Saturday 9.00am-12.30pm or by visiting their website at **www.childrenslegalcentre.com**

Repeat applications

If you have applied for, and been refused, a place at a community school, we will not consider another application for this school for a place in the same school year unless there has been a significant change in your circumstances since you made your original application.

Examples of significant changes in your circumstances may include significant medical or social reasons, not simply a change of address. If you believe you have a strong case, please write to us and send us proof of the change in your circumstances. We may be able to reconsider your application.

Parents, the local authority and the schools involved must accept the appeal panel's decision as final. The Director of Education Services or his staff, city councillors or even members of Parliament cannot change the decision.



Waiting lists

We will only put your child's name on a waiting list for each city school that they have been refused a place at if that school is ranked higher (in your list of preferences) than the school they have been offered a place at or, if you have asked us in writing to do this, we will put their name on the waiting list of a school that is ranked lower than the school they have been offered a place at. (For example, in the table overleaf, we will put Safa's name on the waiting list for School A only.)

Priority on the waiting list will depend on which of the admissions criteria (see pages 69-70 and the separate appendices 1 and 2) your application meets. Waiting list arrangements should be clear and fair, and must not give priority based simply on the date the application was added to the list.

If late applicants have a higher priority under the admissions criteria, they will be placed higher on the waiting list than those who have been on the list for some time.

Your child's place on the list may move up or down. If we have put your child's name on a waiting list, we advise

you not to raise your hopes about the likelihood of your child being offered a place.

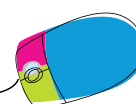
If school places become available, we will fill these places from the top of the waiting list.

If we offer your child a place at a higher-ranked school than the one they were originally offered, we will remove their name from the waiting list for lower-ranked schools. Putting your child's name on a waiting list does not affect your right to appeal against an unsuccessful application.

Year 7 waiting list - waiting lists must be kept open for year 7 until the end of the Autumn term only (December 2020).

If your child does not have a school place at this point you should contact us as we have details of schools with places available and we will help you decide on another school for your child.

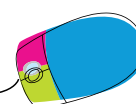
Reception year waiting list - waiting lists must be kept open until the end of the Autumn term (December 2020). For community schools, waiting lists will be kept open until the 2021 summer half term and parents/carers will be contacted on a half termly basis to confirm that they wish their child's name to remain on the waiting list.



Here's an example of when a child called Safa is added to the waiting list for an infant, junior or primary school

Rank	School preference	Safa's details	Outcome of each request	Place offered	Placed on the waiting list
1	School A	Does not live in the catchment area	No	No	Yes
2	School B	Lives in the catchment area	Yes	Yes	Does not apply
3	School C	Does not live in the catchment area, but the school is not oversubscribed	Yes	No	No

If you later refuse the school place you have been offered for your child and ask for a place at a school you had ranked lower than the one you were offered, but that school is full, we will not add your child's name to the waiting list for that school unless you have asked us in writing to put your child's name on the waiting list for that school.



Applying for a school place during the school year

Changing schools during the school year

This information is about applications to change schools between 1 September 2020 and 31 August 2021 (these applications are known as in-year transfers).

Nottingham City Council co-ordinates in-year admission requests for all community schools and for some academies but not all of them.

If you wish to apply for a school place part way through the school year at a Nottingham city school or academy, please check our website for details of how to do this. Or contact us (email schooladmissions@nottinghamcity.gov.uk or telephone **0115 841 5568**) or contact the school you wish to apply to.

For details of how to apply for an in-year transfer to schools in Nottinghamshire County Council's area contact the County Council (email admissions.ed@nottscc.gov.uk or telephone 0300 500 8080).

Moving house

If you move house during the school year, we will be able to tell you which is the catchment school for your new address (if there is a catchment school for your address). This is the school where your child will have a higher priority for a place.

If your catchment school has a history of being oversubscribed and you want to apply for a place at that school, you may be asked to provide documents to prove that you and your child are living in the catchment area (see page 28).

Pages 21 to 23 list the schools which were oversubscribed at the closing date for applications in the 2019/2020 school year. This means that there were more applications than places available in the year group. Please remember that other schools may have become oversubscribed at a later date as a result of late applications received after the closing date. Other schools may have become oversubscribed in these year groups after this booklet was printed.

If this is the case, we may ask you to provide documents to prove that you and your child are living

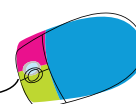
in the catchment area as explained above and on page 27.

Please remember that moving into the catchment area of a school will not guarantee your child a place at that school if the school is already full.

Moving to a different school

Moving your child to another school may affect their education and achievement. We strongly recommend that you keep your child at the school they are at. Many things that worry parents, carers and children can be settled without the need to move schools. Talking to your child and staff at your child's school should avoid the need for your child to change school.

You should read the '*Summary guide to in-year admission arrangements*' before applying for a change of school. You can get a copy of these guidance notes from our website at www.nottinghamcity.gov.uk/schooladmissions, or by contacting us.



If, after discussing the situation with your child's head teacher, you still feel that changing school is the best option for your child, you must fill in an application form to apply for a place in a different school.

How to apply for a place may vary depending on which school or academy you wish to apply for. If you are applying for a Nottingham city community school you can apply online at www.nottinghamcity.gov.uk/schooladmissions or you can get a paper form from us.

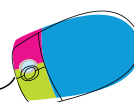
Details of how to apply for individual academies can be found on our website at www.nottinghamcity.gov.uk/schooladmissions or by contacting us or the academy directly.

For community schools, usually the last day for transfers to take place will be during the summer half term. If we receive your application for a transfer in the second half of the summer term, we will only consider offering your child a place for September.

If you are applying for a Nottingham city church school or academy, you should also fill in the relevant supplementary form which you can do online at www.nottinghamcity.gov.uk/schooladmissions or you can get a paper copy from the relevant school.

You should return the supplementary form to the church school/ academy you are applying for, do not send it to us. Please remember to fill in an application form; a supplementary form on its own is not a valid application. If you are applying for a school outside Nottingham city, you should ask that school whether you need to fill in a supplementary form.

While you are waiting to transfer your child from one school to another, they must continue to go to their current school. If they do not, the school may involve the Education Welfare Service.



In-year waiting lists - community schools

We do not hold waiting lists for pupils in year 6. We do not encourage pupils in these year groups to change school because this seriously affects their chances of success in these important years of their education. So, if your child is in year 6 and you are refused a school place, we will not add their name to a waiting list.

If your child is in any other year group and is refused a place at any community school, we will put your child's name on a waiting list for each of those community schools that is ranked higher (in your list of preferences) than the school you have been offered a place at or, if you have asked us in writing to do this, for a community school ranked lower than the school they have been offered a place at.

Priority on the waiting list will depend on which of the admissions criteria (see pages 69 to 70) your application meets. Waiting list arrangements should be clear and fair, and must not give priority based simply on the date the application was added to the list. If later applicants have a

higher priority under the admissions criteria, they will be placed higher on the waiting list than those who have been on the list for some time.

Your child's place on the list may move up or down. If we have put your child's name on a waiting list, we advise you not to raise your hopes about the likelihood of your child being offered a place. If school places become available, we will fill these places from the top of the waiting list.

If we offer your child a place at a higher-ranked school than the one they were originally offered, we will remove their name from the waiting list for lower-ranked schools. Putting your child's name on a waiting list does not affect your right to appeal against an unsuccessful application.

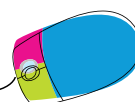
For transfers in reception year to year 5 – your child's name will stay on the waiting list until the end of the 2021 summer half term) and parents/carers will be contacted on a half termly basis to confirm that they wish their child's name to remain on the waiting list.

This does not affect your right of appeal against our decision.

Children who are entitled to a school place under our fair access policy must take priority over those on any waiting list (see page 29).

In-year waiting lists - other schools/academies

Other admissions authorities may hold a waiting list. If they do, it will be in line with their own arrangements. Contact the school or academy concerned for details.



Extra help for children and families



School attendance

A full-time education will give your child the best possible start in life. By law, you must make sure your child receives an appropriate education. Most children receive their education by going to school regularly.

The Education Welfare Service works with schools to promote attendance and to ensure pupils are attending regularly. Parents/carers who fail to ensure regular attendance at school are at risk of being prosecuted in the Magistrates Court. Education Welfare Officers provide help, support and guidance to children, young people and families with all aspects of school attendance.

For help with and advice on school attendance, contact your child's school

or Education Welfare (phone **0115 876 2965** or email **EducationWelfareServices@nottinghamcity.gov.uk**)

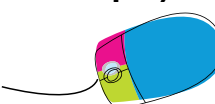
Free school meals and milk

Midday meals are available in all schools. Your child may qualify for either a free two-course meal or, where the school has a cafeteria service, items up to the price of a school meal, if you receive:

- Income Support;
- Income-based Jobseeker's Allowance;
- Child Tax Credit (without Working Tax Credit), with an income (assessed by HM Revenue & Customs) of less than £16,190;
- Support under Section 95 of the Immigration Asylum Seeker Act 1999;

- Employment Support Allowance (income related);
- Pension Credit (Guarantee Credit); or
- Universal Tax Credit (subject to means testing).

All children receive free school milk up to their fifth birthday. Children who are eligible for free school meals may be entitled to receive free milk up to the end of the term in which they reach their seventh birthday. If you would like to apply for free school meals for your child (or children) and they will be going to a city school, you should contact the Pupil Benefits Team on **0115 915 4084** or email **pupil.benefits@nottinghamcity.gov.uk** or visit the enquiry counter at **Loxley House, Station Street, Nottingham NG2 3NG** which is open **between 8.30am and 4.30pm Monday to Friday (except Thursday 9.30am-4.30pm).**



Universal infant free school meals

From September 2014 all children in reception year, year 1 and year 2 at state-funded schools in England have been eligible for free school meals, as part of the national Universal Free Infant School Meals scheme.

It is important, however, that all parents who receive one of the benefits listed above register for free school meals as this will enable your child's school to claim "pupil premium allocation". The pupil premium is additional funding given to publicly funded schools in England to raise attainment. This additional funding for schools can help to buy new equipment and resources.

If your child will be going to a county school, you should contact Nottinghamshire County Council on **01623 433 009** or email **parentpupil.north@nottscc.gov.uk**

If your child is offered a place and is going to attend Djanogly City Academy, Bluecoat Aspley Academy, Bluecoat Wollaton Academy or Nottingham Emmanuel Academy, please apply directly to the relevant Academy as the Pupil Benefits Team does not administer free school meals on their behalf.

School clothing allowance

Each school decides whether their pupils must wear a school uniform and games kit. Please check the school's prospectus. If your child goes to a community school and you live within the Nottingham city boundary, you may be entitled to help with the cost of school clothes and shoes for your children aged 5 to 16 years if you receive:

- Income Support;
- Income-based Jobseeker's Allowance;
- Child Tax Credit or Working Tax Credit with an income (assessed by HM Revenue & Customs) of less than £16,190;
- Support under Section 95 of the Immigration Asylum Seeker Act 1999;
- Employment Support Allowance (income related);
- Pension Credit (Guarantee Credit); or
- Universal Tax Credit.

and your child is in one of the following school years: reception, 1, 4, 7, 9 or 11.

If you are entitled to help, you will receive a payment at the beginning of the school year as a contribution towards the

cost of your child's uniform for that school year.

It is not possible to provide support with School Clothing if your child attends an academy. Please contact the academy to find out if they operate a School Clothing Allowance scheme.

If you would like to apply for school clothing allowance, please send your application to the Pupil Benefits Team by 31 December 2019.

For more information, please contact the Pupil Benefits Team. Phone: **0115 915 4084** Monday to Friday between 8.30am and 4.50pm (except Thursday 9.30am-4.50pm).

Email: **pupil.benefits@nottinghamcity.gov.uk**

Call in: **Loxley House, Station Street, Nottingham NG2 3NG** (the enquiry counter is open between 8.30am and 4.30pm, Monday to Friday except Thursday, 9.30am-4.30pm).

If you are entitled to help, you will receive a payment at the beginning of the school year as a contribution towards the cost of your child's uniform for that school year.

Early Years Pupil Premium – Information for Parents

What is the EYPP?

In April 2016, the Government introduced the Early Years Pupil Premium (EYPP). Schools, nurseries, pre-schools and childminders registered to deliver the funded early education entitlement for 3 and 4 year olds will be able to claim up to an extra £300 per year through the EYPP for eligible children to help support the delivery of high quality early education.

How could this help your child?

Additional funding will help your child's school or early years setting to:

- Extend the facilities, equipment and learning experiences available
- Provide additional services to meet your child's particular needs and interests
- Further support your child's individual learning and development

Could my child be eligible?

If your 3 or 4 year old is accessing their free early education entitlement at a registered early years setting and you meet at least one of the following criteria then your child could be eligible:

- **Income Support**
- Income-based **Jobseeker's Allowance**
- Income-related **Employment and Support Allowance**
- Support under Section 95 of the **Immigration and Asylum Act 1999**
- The guaranteed element of **State Pension Credit**
- **Child Tax Credit** (provided you're not also entitled to Working Tax Credit and have an annual gross income of no more than £16,190)
- **Working Tax Credit run-on**, which is paid for 4 weeks after you stop qualifying for Working Tax Credit
- **Universal Tax Credit** (parents **must** have an annual net earned income equivalent to and not exceeding £7,400, assessed on up to three of the parents most recent Universal Credit assessment periods).

Children are also eligible if they have:

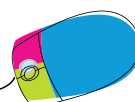
- Been in local-authority care for 1 day or more in England or Wales
- Been adopted from care in England or Wales
- Left care under a special guardianship order in

England or Wales

- Been subject to a child arrangement order setting out with whom the child is to live (formerly known as residence orders).

What should you do next?

If you think you qualify, it's quick and easy. Talk to your school or early years setting who will help you to apply through completing a simple form to allow your eligibility to be checked.



School Information

Types of schools in Nottingham

Different types of schools will have different arrangements for admission.

As the local authority, we maintain a number of the schools in the city.

Community schools

We are the admissions authority for these schools and are responsible for offering or refusing places. Individual schools and head teachers are not allowed to offer or refuse places at these schools. The admissions arrangements set out in this booklet apply mainly to community schools.

Academies

Academies are all-ability schools set up by sponsors from business, faith or voluntary groups working with partners from the local community.

The academy trust is the admissions authority and is responsible for offering or refusing places.

Free schools

Free schools are funded by the government but aren't run by the local authority. They have more control over how they do things. They're 'all-ability' schools, so can't use academic selection processes like a grammar school. Free schools can set their own pay and conditions for staff, change the length of school terms and the school day and they don't have to follow the national curriculum.

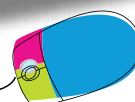
There is one free school in the city – Nottingham Free School, which is a member of the Torch Academy Gateway Trust. The Trust has delegated the responsibility for offering or refusing school places to the Nottingham Free School Local Governing Body.

Single-sex education for girls

The Nottingham Girls' Academy is an academy which provides single-sex education for girls between the ages of 11 and 18.

The academy trust is the admissions authority and is responsible for offering or refusing places.

Please note that the local authority does not have accountability for academies. The accountability line for academies is to the Secretary of State via the Regional Schools Commissioner.



14 – 19 Academies, University Technical Colleges and Studio Schools

Technical Academies

Technical Academies are part of the government's plans to improve the quality of vocational education, including increased flexibility for 14-19 year olds. These are being established across England to develop vocational technical education that engages young people and meets the needs of modern business.

University Technical Colleges

University Technical Colleges (UTCs) offer 14-19 year olds the opportunity to take a highly regarded, technically-oriented course of study at a specialist college. The Colleges are sponsored by a university often in partnership with a college of further education, offering clear progression routes into higher education or further learning in work.

Pupils integrate academic study with practical learning, studying core GCSEs alongside technical qualifications.

Studio Schools

Studio schools are an innovative new model of 14-19 year old educational provision. They are small schools - typically with around 300 pupils - delivering mainstream qualifications through project-based learning.

Students work with local employers and a personal coach, and follow a curriculum designed to give them the employability skills and qualifications they need in work, or to take up further education.

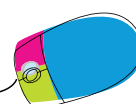
The Nottingham University Academy of Science and Technology

Nottingham University Academy of Science and Technology (NUAST) is a specialist academy offering Year 10 students the chance to specialise in science, engineering or computing whilst continuing to study a full range of EBacc subjects.

How to apply

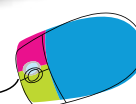
If you live in Nottingham city and wish to apply for a place in Year 10 at the Nottingham University Academy of Science and Technology or any other 14-19 school, academy or college in another authority for September 2020, you should apply when your child is in year 9 by 31 October 2019, which is the closing date for applications. The quickest and easiest way to apply is to go to www.nottinghamcity.gov.uk/schooladmissions and follow the simple step by step instructions. Applying online is completely safe and secure. A paper form to fill in is available on request.

If we receive your application after 31 October 2019, it will be considered as a late application which may affect your child's chance of getting a place at your preferred school, academy or college.





Apply online: www.nottinghamcity.gov.uk/schooladmissions





Post 16 Education

The Education and Skills Act 2008 increased the minimum age at which young people in England can leave learning. This means that young people are expected to remain in education or training until their 18th birthday. This doesn't mean they need to stay at school.

There are several options available, which include:

- full-time education (540 hours per year), such as sixth form, college or home education
- an apprenticeship
- part-time education or training (280 hours per year) if they are employed, self employed or volunteering for more than 20 hours a week.

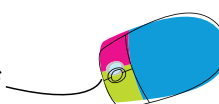
The majority of young people in Nottingham already choose to continue their education between the ages of 16 and 18, as they recognise the benefits this will bring in terms of improving chances of employability and quality of life.

The aim for Nottingham is to ensure all young people aged 16 and 17 are undertaking a programme of learning that meets their needs and aspirations.

This can be achieved by ensuring all the city's young people receive good quality, impartial and independent careers information, advice and guidance (IAG) - since this will enable them to make informed decisions about their future options, which will increase their chances of a successful transition from Key Stage 4 to 5.

Your child will be able to seek advice and guidance on the full range of options available to them through their school. They can also contact The National Careers Service and speak to an advisor. The helpline is available from 8am to 10pm, seven days a week on **0800 100 900**. They can also send text messages to **07766 413 219** or search online for the **National Careers Service**.

All 16/17 year olds, who are Not in Education Employment or Training, can get lots of help to apply for learning, apprenticeships and traineeships by calling into the Futures Centre, 57 Maid Marian Way, Nottingham, Monday – Friday between 12.30pm – 3.30pm or by telephone on 0115 960 1597.



School terms and holiday calendar – 2020/21

The Nottingham Model

AUGUST 2020						
M		3	10	17	24	31
T		4	11	18	25	
W		5	12	19	26	
TH		6	13	20	27	
F		7	14	21	28	
S	1	8	15	22	29	
SU	2	9	16	23	30	

SEPTEMBER 2020						
M		7	14	21	28	
T	1	8	15	22	29	
W	2	9	16	23	30	
TH	3	10	17	24		
F	4	11	18	25		
S	5	12	19	26		
SU	6	13	20	27		

OCTOBER 2020						
M		5	12	19	26	
T		6	13	20	27	
W		7	14	21	28	
TH	1	8	15	22	29	
F	2	9	16	23	30	
S	3	10	17	24	31	
SU	4	11	18	25		

NOVEMBER 2020						
M		2	9	16	23	30
T		3	10	17	24	
W		4	11	18	25	
TH		5	12	19	26	
F		6	13	20	27	
S		7	14	21	28	
SU	1	8	15	22	29	

DECEMBER 2020						
M		7	14	21	28	
T	1	8	15	22	29	
W	2	9	16	23	30	
TH	3	10	17	24	31	
F	4	11	18	25		
S	5	12	19	26		
SU	6	13	20	27		

JANUARY 2021						
M		4	11	18	25	
T		5	12	19	26	
W		6	13	20	27	
TH		7	14	21	28	
F	1	8	15	22	29	
S	2	9	16	23	30	
SU	3	10	17	24	31	

FEBRUARY 2021						
M	1	8	15	22		
T	2	9	16	23		
W	3	10	17	24		
TH	4	11	18	25		
F	5	12	19	26		
S	6	13	20	27		
SU	7	14	21	28		

MARCH 2021						
M	1	8	15	22	29	
T	2	9	16	23	30	
W	3	10	17	24	31	
TH	4	11	18	25		
F	5	12	19	26		
S	6	13	20	27		
SU	7	14	21	28		

APRIL 2021						
M		5	12	19	26	
T		6	13	20	27	
W		7	14	21	28	
TH	1	8	15	22	29	
F	2	9	16	23	30	
S	3	10	17	24		
SU	4	11	18	25		

MAY 2021						
M		3	10	17	24	31
T		4	11	18	25	
W		5	12	19	26	
TH		6	13	20	27	
F		7	14	21	28	
S	1	8	15	22	29	
SU	2	9	16	23	30	

JUNE 2021						
M		7	14	21	28	
T	1	8	15	22	29	
W	2	9	16	23	30	
TH	3	10	17	24		
F	4	11	18	25		
S	5	12	19	26		
SU	6	13	20	27		

JULY 2021						
M		5	12	19	26	
T		6	13	20	27	
W		7	14	21	28	
TH	1	8	15	22	29	
F	2	9	16	23	30	
S	3	10	17	24	31	
SU	4	11	18	25		

KEY

- In school
- Public Holiday
- School Holiday
- In Service Training Day

- Half term 1 – 7 weeks
- Half term 2 – 7 weeks
- Half term 3 – 6 weeks
- Half term 4 – 5 weeks 4 days
- Half term 5 – 5 weeks 4 days
- Half term 6 – 7 weeks 2 days

Directory of primary schools

School name and address	Contact details	Head Teacher	Age range	Estimated number on roll - Sept 2019	Published admission number	Total number of preferences received for reception year by closing date	Oversubscribed at closing date last year? See pages 21 to 22 for details	Type of School	Admission criteria	Map reference
Ambleside Primary Minver Crescent, Aspley Nottingham NG8 5PN	0115 900 3610 admin@ambleside.nottingham.sch.uk www.amblesideprimaryschool.co.uk	Ms J Bromley	3 to 11	630	90	129	No	Academy	See Appendix 2	Map 2, page 59
Bentnick Primary & Nursery Alfreton Road, Radford Nottingham NG7 4AA	0115 915 1567 admin@bentnick.nottingham.sch.uk www.bentnickprimary.co.uk	Mrs J Nunez	3 to 11	210	30	96	No	Community	See page 70	Map 3, page 60
Berridge Primary & Nursery Split Campus* Bobbersmill Road, Hyson Green, Nottingham NG7 5GY	0115 915 5851 admin@berridge.nottingham.sch.uk www.berridgeprimary.com	Mr J Tee	3 to 11	622	90	126	No	Community	See page 70	Map 3, page 60
Blessed Robert Widmerpool Catholic Voluntary Academy (Parish of Corpus Christi) Listowel Crescent, Clifton Nottingham NG11 9BH	0115 915 2392 admin@brw.nottingham.sch.uk www.brwacademy.com	Mrs Luisa Maylard-Mason	3 to 11	215	30	57	No	VA Academy	See Appendix 2	Map 1, page 58
Blue Bell Hill Primary School Gordon Road, St Ann's Nottingham NG3 2LE	0115 915 1161 admin@bluebellhill.org.uk www.bluebellhill.org.uk	Mrs R Edge	3 to 11	420	60	127	Yes	Academy	See Appendix 2	Map 4, page 61
Bluecoat Primary Academy, Harvey Road, Bilborough, Nottingham NG8 3BB	0115 900 7200 office@bluecoatprimaryacademy.co.uk www.bluecoatprimaryacademy.co.uk	Mrs S Shaw	3 to 11	300	60	172	Yes	Academy	See Appendix 2	Map 2, page 59
Brocklewood Primary School Fircroft Avenue, Bilborough Nottingham NG8 3AL	0115 915 3272 or 0115 915 5731 admin@brocklewood.nottingham.sch.uk www.brocklewoodprimaryschool.co.uk	Mrs H Tarrant	3 to 11	484	73	118	No	Academy	See Appendix 2	Map 2, page 59

*Berridge Primary and Nursery operates on two sites, i.e. Bobbers Mill Site (KS1) and Brushfield Site (KS2)

School name and address	Contact details	Head Teacher	Age range	Estimated number on roll - Sept 2019	Published admission number	Total number of preferences received for reception year by closing date	Oversubscribed at closing date last year? See pages 21 to 22 for details	Type of School	Admission criteria	Map reference
Bulwell St Mary's C of E Primary & Nursery Ragdale Road, Bulwell Nottingham NG6 8GQ	0115 915 1506 admin@bsm.nottingham.sch.uk www.bulwellstmarys.co.uk	Mr D Farthing	3 to 11	265	30	72	Yes	Academy	See Appendix 2	Map 6, page 63
Burford Primary & Nursery Oxclose Lane, Arnold Nottingham NG5 6FX	0115 915 1560 admin@burford.nottingham.sch.uk www.burfordprimaryandnursery.co.uk	Mr S Farrington	3 to 11	210	30	67	Yes	Academy	See Appendix 2	Map 5, page 62
Cantrell Primary & Nursery Cantrell Road, Bulwell Nottingham NG6 9HJ	0115 915 5770 admin@cantrell.nottingham.sch.uk www.cantrell.nottingham.sch.uk	Mrs D Weaver	3 to 11	416	60	93	Yes	Community	See page 70	Map 6, page 63
Carrington Primary & Nursery Jenner Street, Carrington Nottingham NG5 1AB	0115 915 6825 admin@carrington.nottingham.sch.uk www.carrington.nottingham.sch.uk	Mrs C Skeats	3 to 11	210	30	153	Yes	Community	See page 70	Map 4, page 61
Claremont Primary & Nursery Claremont Road, Carrington Nottingham NG5 1BH	0115 915 6870 admin@claremont.nottingham.sch.uk www.claremont.nottingham.sch.uk	Mr M Campbell	3 to 11	408	60	139	No	Community	See page 70	Map 3, page 60
Crabtree Farm Primary & Nursery Steadfold Close, Bulwell Nottingham NG6 8AX	0115 915 5737 admin@crabtreefarm.nottingham.sch.uk www.crabtreefarm.nottingham.sch.uk	Ms L Heskey (Acting Head)	3 to 11	402	60	60	No	Community	See page 70	Map 6, page 63
Djanogly Northgate Academy Suez Street, New Basford Nottingham NG7 7GB	0115 915 6896 admin@northgate.djanogly.org www.northgateacademy.co.uk	Mr R Jackson	3 to 11	405	60	77	No	Academy	See Appendix 2	Map 3, page 60
Djanogly Sherwood Academy Sherwood Rise, Nottingham NG7 7AR	0115 942 1301 admin@sherwood.djanogly.org www.sherwoodacademy.co.uk	Mrs H Keen	3 to 11	280	60	47	No	Academy	See Appendix 2	Map 3, page 60

School name and address	Contact details	Head Teacher	Age range	Estimated number on roll - Sept 2019	Published admission number	Total number of preferences received for reception year by closing date	Oversubscribed at closing date last year? See pages 21 to 22 for details	Type of School	Admission criteria	Map reference
Djanogly Strelley Academy Helston Drive, Strelley Nottingham NG8 6JZ	0115 884 5913 admin@strelley.djanogly.org www.djanoglystrelleyacademy.co.uk	Mrs F Sian	3 to 11	405	60	62	No	Academy	See Appendix 2	Map 2, page 59
Dovecote Primary & Nursery Greencroft, Clifton Nottingham NG11 8EY	0115 915 2953 admin@dovecote.nottingham.sch.uk www.dovecote.nottingham.sch.uk	Mr A Jenkins	3 to 11	374	60	62	No	Community	See page 70	Map 1, page 58
Dunkirk Primary & Nursery School - split campus* (Highfield campus) Marlborough Street, Dunkirk Nottingham NG7 2LE & (Abbey campus) Lenton Boulevard, Nottingham	0115 915 3273 & 915 1935 admin@dunkirk.nottingham.sch.uk www.dunkirkprimary.com	Mrs H Hollis	3 to 11	454	60	91	No	Community	See page 70	Map 3, page 60
Edale Rise Primary & Nursery Edale Road, Sneinton Nottingham NG2 4HT	0115 915 0180 admin@edale-rise.nottingham.sch.uk www.edale-rise-primary.co.uk	Ms Sharon O'Connor	3 to 11	209	30	94	Yes	Academy	See Appendix 2	Map 7, page 64
Edna G Olds Academy Church Street, Lenton Nottingham NG7 1SJ	0115 915 6813 admin@ednagolds.co.uk www.ednagoldsacademy.co.uk	Mrs M Pemberton	3 to 11	207	30	77	Yes	Academy	See Appendix 2	Map 3, page 60
Fernwood Primary and Nursery School Arliston Drive, Wollaton Nottingham NG8 2FZ	0115 915 5727 admin@fernwoodprimary.co.uk www.fernwoodprimary.co.uk	Mrs M Austin (Executive Head)	3 to 11	973	150	329	Yes	Community	See page 70	Map 2, page 59
Firbeck Academy Firbeck Road, Wollaton Nottingham NG8 2FB	0115 915 5739 admin@firbeck.nottingham.sch.uk www.firbeck.org.uk	Mrs V Hayles (Executive Head)	3 to 11	194	30	50	No	Academy	See Appendix 2	Map 2, page 59

*Dunkirk Primary and Nursery School operates on two sites, i.e. Marlborough Road and Lenton Boulevard. For distance purposes, measurements will be made from the pupil's home to both school sites using a computerised geographical information system in a straight line (as the crow flies). The shorter of those two measurements will then be used to determine the distance to the pupil's home where the school is oversubscribed (see full details of the admission criteria for community schools on page 70). This does not mean that if the pupil is offered a place at Dunkirk Primary and Nursery School this will be for the site closest to their home. The decision of which site the pupil is accommodated on will be made by the head teacher at the school. The allocation of a place at either site does not form part of the admission arrangements and there is no right of appeal against the allocation of a particular site.

School name and address	Contact details	Head Teacher	Age range	Estimated number on roll - Sept 2019	Published admission number	Total number of preferences received for reception year by closing date	Over subscribed at closing date last year? See pages 21 to 22 for details	Type of School	Admission criteria	Map reference
Forest Fields Primary & Nursery Stanley Road, Forest Fields Nottingham NG7 6GQ	0115 915 6872 admin@forestfields.nottingham.sch.uk www.forestfields.nottingham.sch.uk	Ms S Hoyland	3 to 11	590	90	110	No	Community	See page 70	Map 3, page 60
Glade Hill Primary & Nursery Chippenham Road Bestwood Park Nottingham NG5 5TA	0115 915 0298 admin@gladehill.nottingham.sch.uk www.gladehill.nottingham.sch.uk	Ms L Sheppard	3 to 11	295	60	96	No	Community	See page 70	Map 5, page 62
The Glapton Academy Glapton Lane, Clifton Nottingham NG11 8EA	0115 915 2936 admin@glaptonacademy.co.uk www.glaptonacademy.co.uk	Ms C Hurst	3 to 11	330	60	80	No	Academy	See Appendix 2	Map 1, page 58
Glenbrook Primary & Nursery Wigman Road, Bilborough Nottingham NG8 4PD	0115 915 5717 admin@glenbrook.nottingham.sch.uk www.glenbrooknottingham.org.uk	Miss V Cairns	3 to 11	347	60	85	No	Academy	See Appendix 2	Map 2, page 59
Greenfields Community Orange Gardens, The Meadows Nottingham NG2 2JE	0115 915 3762 admin@greenfields.nottingham.sch.uk www.greenfields.nottingham.sch.uk	Mr T Smith	3 to 11	207	30	83	Yes	Community	See page 70	Map 7, page 64
Haydn Primary & Nursery Haydn Road, Sherwood Nottingham NG5 2JU	0115 915 0193 admin@haydn.nottingham.sch.uk www.haydn.nottingham.sch.uk	Mr P Fielding & Mrs S Fielding (job share)	3 to 11	422	60	226	Yes	Community	See page 70	Map 4, page 61
Heathfield Primary & Nursery** (Split campus) Scotland Road, Basford Nottingham NG5 1JU & Kersall Drive Campus, Kersall Drive, Nottingham. NG6 9EU	0115 915 5725 & 0115 979 4304 admin@heathfield.nottingham.sch.uk www.heathfieldprimary.org.uk	Mr G Fullwood	3 to 11	580	100	183	Yes	Community	See page 70	Map 6, page 63

**Heathfield Primary and Nursery School operates on two sites, i.e. Scotland Road and the former Henry Mellish School site (Kemmel Road / Highbury Road / Kersall Drive). For distance purposes, measurements will be made from the pupil's home to both school sites using a computerised geographical information system in a straight line (as the crow flies). The shorter of those two measurements will then be used to determine the distance to the pupil's home where the school is oversubscribed (see full details of the admission criteria for community schools on page 70). This does not mean that if the pupil is offered a place at Heathfield Primary and Nursery School this will be for the site closest to their home. The decision of which site the pupil is accommodated on will be made by the head teacher at the school. The allocation of a place at either site does not form part of the admission arrangements and there is no right of appeal against the allocation of a particular site.

School name and address	Contact details	Head Teacher	Age range	Estimated number on roll - Sept 2019	Published admission number	Total number of preferences received for reception year by closing date	Oversubscribed at closing date last year? See pages 21 to 22 for details	Type of School	Admission criteria	Map reference
Hempshill Hall Primary Armstrong Road, Hempshill Vale Nottingham NG6 7AT	0115 915 3275 admin@hempshillhall.nottingham.sch.uk www.hempshillhall.com	Mrs Karen Gregg & Mrs Sally Dakin	3 to 11	405	60	87	No	Community	See page 70	Map 6, page 63
Henry Whipple Primary Padstow Road, Bestwood Nottingham NG5 5GH	0115 915 5723 admin@henrywhipple.nottingham.sch.uk www.henrywhipple.co.uk	Mrs C Burgess	3 to 11	208	30	33	No	Community	See page 70	Map 5, page 62
Highbank Primary & Nursery Winscombe Mount, Clifton Nottingham NG11 9FP	0115 915 2965 admin@highbank.nottingham.sch.uk www.highbankpriandnursery.co.uk	Ms L Lister	3 to 11	266	47	45	No	Academy	See Appendix 2	Map 1, page 58
Hogarth Academy Porchester Road, Mapperley Nottingham NG3 6JG	0115 915 0106 admin@hogarthacademy.co.uk www.hogarthacademy.co.uk	Ms S Lee	3 to 11	207	30	62	No	Academy	See Appendix 2	Map 4, page 61
Huntingdon Academy Alfred Street Central, St Ann's Nottingham NG3 4AY	0115 915 6841 admin@huntingdon.academy.co.uk www.huntingdonacademy.co.uk	Mr R Middleton	3 to 11	351	60	98	No	Academy	See Appendix 2	Map 4, page 61
Jubilee L.E.A.D. Academy Highwood Avenue, Bilborough Nottingham NG8 3AF	0115 915 5719 admin@jubilee.nottingham.sch.uk www.jubilee.nottingham.sch.uk	Mrs N McIntyre	3 to 11	346	60	60	No	Academy	See Appendix 2	Map 2, page 59
Melbury Primary (Nursery attached) Melbury Road, Bilborough Nottingham NG8 4AU	0115 915 5787 admin@melbury.nottingham.sch.uk www.melburyprimary.co.uk	Ms J Kemplay	3 to 11	194	30	59	No	Community	See page 70	Map 2, page 59
Mellers Primary School Norton Street, Radford Nottingham NG7 3HU	0115 915 1796 admin@mellers.nottingham.sch.uk www.mellersprimary.co.uk	Ms A Dawson	3 to 11	326	60	118	Yes	Community	See page 70	Map 3, page 60
Middleton Primary & Nursery Harrow Road, Wollaton Park Nottingham NG8 1FG	0115 915 3261 admin@middleton.nottingham.sch.uk www.middletonprimary.com	Mr M Brumwell	3 to 11	461	90	227	Yes	Community	See page 70	Map 2, page 59

School name and address	Contact details	Head Teacher	Age range	Estimated number on roll - Sept 2019	Published admission number	Total number of preferences received for reception year by closing date	Oversubscribed at closing date last year? See pages 21 to 22 for details	Type of School	Admission criteria	Map reference
The Milford Academy Dungannon Road, Clifton Nottingham NG11 9BT	0115 915 2951 admin@milford.nottingham.sch.uk www.milfordacademy.org.uk	Mr D Magner	3 to 11	387	60	97	No	Academy	See Appendix 2	Map 1, page 58
Nottingham Academy Greenwood Road, Bakersfield Nottingham NG3 7EB	0115 748 3385 admin@nottinghamacademy.org www.nottinghamacademy.org	Mr S Jones	3 to 19	2300	150	139	No	Academy	See Appendix 2	Map 7, page 64
The Nottingham Nursery School & Training Centre Denman Street West, Radford Nottingham NG7 3AB (Please note that parents/carers must apply directly to the Nottingham Nursery School for a nursery place for their child)	0115 915 9090 reception@nurseryschool.nottingham.sch.uk www.nottinghamnurseryschool.co.uk	Laura Dermody (Acting Head)	2 to 4	100	98	N/A	N/A	Maintained Nursery School	Contact the Nursery School for criteria	
Old Basford School Percy Street, Old Basford Nottingham NG6 0GF	0115 978 5505 admin@oldbasford.nottingham.sch.uk www.oldbasfordschool.co.uk	Mrs V Shaw	3 to 11	420	60	101	Yes	Academy	See Appendix 2	Map 6, page 63
Our Lady and St Edward Primary & Nursery Catholic Voluntary Academy (Parish of Our Lady & St Edward) Gordon Road, St Ann's Nottingham NG3 2LG	0115 915 5800 admin@olseacademy.org.uk www.olseacademy.org.uk	Ms R Byrnes	3 to 11	210	30	75	Yes	VA Academy	See Appendix 2	Map 4, page 61
Our Lady of Perpetual Succour Catholic Voluntary Academy (Parish of Our Lady of Perpetual Succour) Piccadilly, Bulwell Nottingham NG6 9FN	0115 915 0500 admin@ourladyops.nottingham.sch.uk www.ourladyopsbulwell.com	Mrs C Toner	3 to 11	212	30	89	Yes	VA Academy	See Appendix 2	Map 6, page 63
Portland Spencer Academy Westwick Road, Bilborough Nottingham NG8 4HB	0115 915 5747 admin@portland.nottingham.sch.uk www.portlandspenceracademy.co.uk	Mrs K Green	3 to 11	372	60	67	No	Academy	See Appendix 2	Map 2, page 59

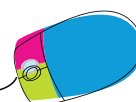
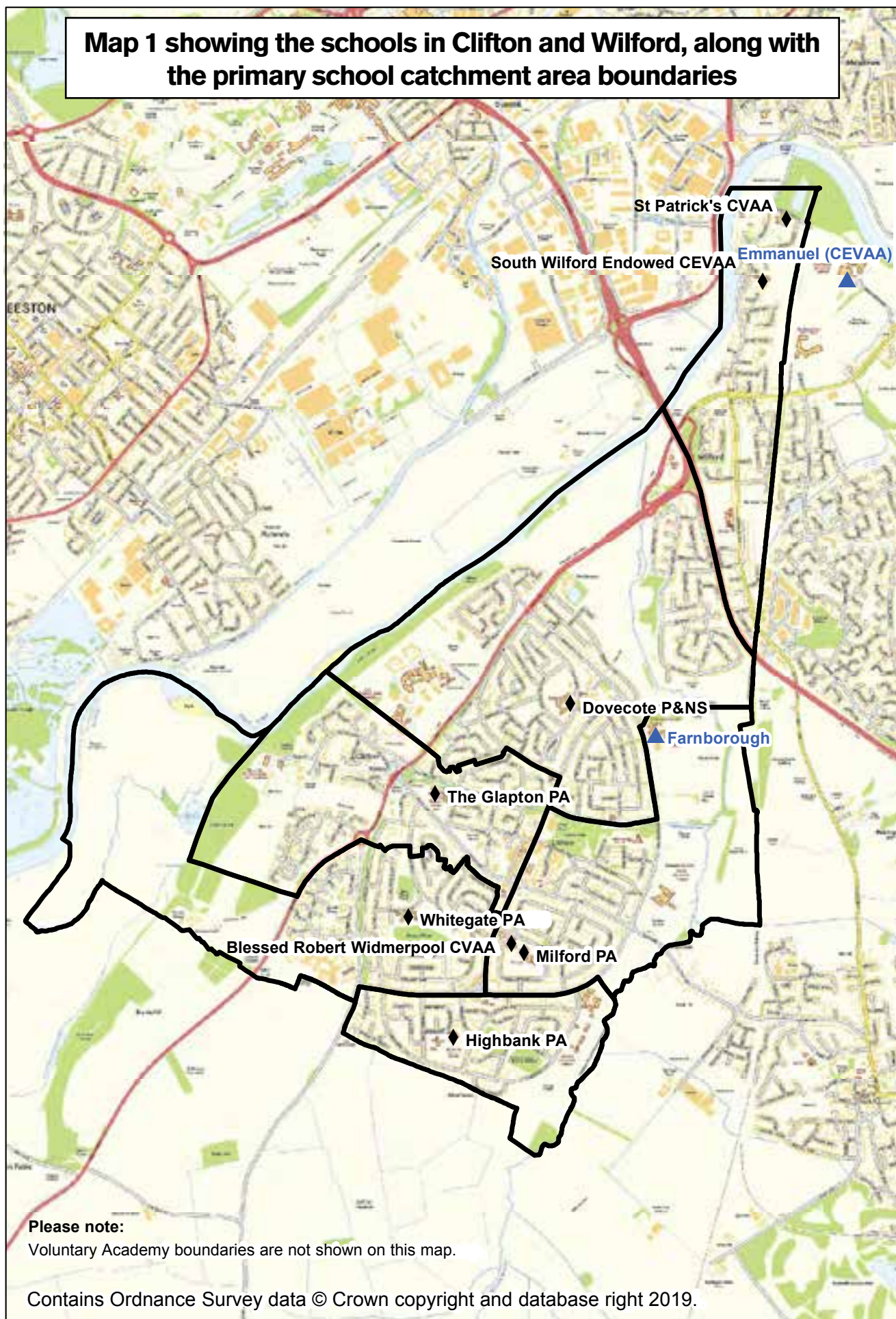
School name and address	Contact details	Head Teacher	Age range	Estimated number on roll - Sept 2019	Published admission number	Total number of preferences received for reception year by closing date	Oversubscribed at closing date last year? See pages 21 to 22 for details	Type of School	Admission criteria	Map reference
Radford Academy Denman Street West, Radford Nottingham NG7 3FL	0115 915 5810 admin@radford.nottingham.sch.uk www.radfordacademy.co.uk	Meeta Davé	4 to 11	208	30	77	Yes	Academy	See Appendix 2	Map 3, page 60
Rise Park Primary & Nursery Bestwood Park Drive West, Rise Park Nottingham NG5 5EL	0115 915 3775 admin@risepark.nottingham.sch.uk www.riseparkprimaryschool.co.uk	Mrs N Kelly	3 to 11	417	60	122	No	Community	See page 70	Map 5, page 62
Robert Shaw Primary & Nursery School Southfield Road Western Boulevard Nottingham NG8 3PL	0115 915 5765 admin@robertshaw.nottingham.sch.uk www.robertshaw.nottingham.sch.uk	Mrs K Coker	3 to 11	423	60	75	No	Academy	See Appendix 2	Map 2, page 59
Robin Hood Primary & Nursery Beckhamton Road Bestwood Park Nottingham NG5 5NA	0115 915 3982 admin@robinhood.nottingham.sch.uk www.robinhoodprimary.co.uk	Nicky Bridges	3 to 11	419	60	133	Yes	Community	See page 70	Map 5, page 62
Rosslyn Park Primary & Nursery Amesbury Circus, Aspley Nottingham NG8 6DD	0115 915 3266 admin@rosslyn.nottingham.sch.uk www.rosslyn.nottingham.sch.uk	Mr S Mason	3 to 11	620	90	116	No	Academy	See Appendix 2	Map 2, page 59
Rufford Primary Hoewood Road, Bulwell Nottingham NG6 8LE	0115 915 5755 admin@rufford.nottingham.sch.uk www.rufford.nottingham.sch.uk	Mrs A Tones	3 to 11	393	60	68	No	Community	See page 70	Map 6, page 63
Scotholme Primary & Nursery Fisher Street, Hyson Green Nottingham NG7 6FJ	0115 978 1968 admin@scotholme.nottingham.sch.uk www.scotholme.com	Ms K Hall	3 to 11	419	60	136	No	Academy	See Appendix 2	Map 3, page 60
Seely Primary & Nursery Perry Road, Sherwood Nottingham NG5 3AE	0115 915 3780 admin@seely.nottingham.sch.uk www.seely.nottingham.sch.uk	Mrs S Pearce / Mrs J Newton (job share)	3 to 11	525	75	128	No	Community	See page 70	Map 4, page 61
Snape Wood Primary & Nursery Aspen Road, Snapewood Nottingham NG6 7DS	0115 915 9146 admin@snapewood.nottingham.sch.uk www.snapewood.nottingham.sch.uk	Mrs Choudry	3 to 11	198	30	30	No	Community	See page 70	Map 6, page 63

School name and address	Contact details	Head Teacher	Age range	Estimated number on roll - Sept 2019	Published admission number	Total number of preferences received for reception year by closing date	Oversubscribed at closing date last year? See pages 21 to 22 for details	Type of School	Admission criteria	Map reference
Sneinton St Stephen's CofE Primary Windmill Lane, Sneinton Nottingham NG2 4QB	0115 915 1370 admin@sneinton.nottingham.sch.uk www.sneintoncofeprimaryschool.co.uk	Mrs Kelly Lee	3 to 11	210	30	77	Yes	VA Academy	See Appendix 2	Map 7, page 64
Southglade Primary & Nursery Beckhampton Road Bestwood Park Nottingham NG5 5NE	0115 915 5763 admin@southglade.nottingham.sch.uk www.southgladeprimary.co.uk	Mrs A Thomas	3 to 11	410	60	90	No	Community	See page 70	Map 5, page 62
Southwark Primary School Park Lane, Old Basford Nottingham NG6 0DT	0115 915 0466 admin@southwarkprimary.net www.southwarkprimary.net	Mr B Skirton	3 to 11	628	90	143	No	Academy	See Appendix 2	Map 6, page 63
South Wilford Endowed CofE Primary Main Road, Wilford Nottingham NG11 7AL	0115 915 2967/8 admin@southwilford.nottingham.sch.uk www.southwilford.nottingham.sch.uk	Jenny Marshall	4 to 11	370	60	107	Yes	Academy	See Appendix 2	Map 1, page 58
Southwold Primary & Early Years Centre Kennington Road, Radford Nottingham NG8 1QD	0115 915 5756 admin@southwold.nottingham.sch.uk www.southwoldprimary.com	Mrs K Clifford	3 to 11	207	30	56	No	Community	See page 70	Map 2, page 59
Springfield Primary (Nursery attached) Lawton Drive, Bulwell Nottingham NG6 8BL	0115 915 5769 admin@springfield.djanogly.org www.springfieldacademy.co.uk	Mrs J B Francis	3 to 11	190	30	38	No	Academy	See Appendix 2	Map 6, page 63
St Ann's Well Academy Hungerhill Road St Ann's Nottingham NG3 3PQ	0115 915 5808 admin@st-anns.nottingham.sch.uk www.stannswellacademy.co.uk	Mrs E. Thorne	3 to 11	210	30	68	No	Academy	See Appendix 2	Map 4, page 61
St Augustine's Catholic Voluntary Academy (Parish of St Augustine s) Park Avenue, Mapperley Nottingham NG3 4JS	0115 915 6995 admin@st-augustines.nottingham.sch.uk www.augustinesprimary.weebly.com	Mr Barker	3 to 11	317	45	86	No	VA Academy	See Appendix 2	Map 4, page 61

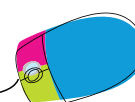
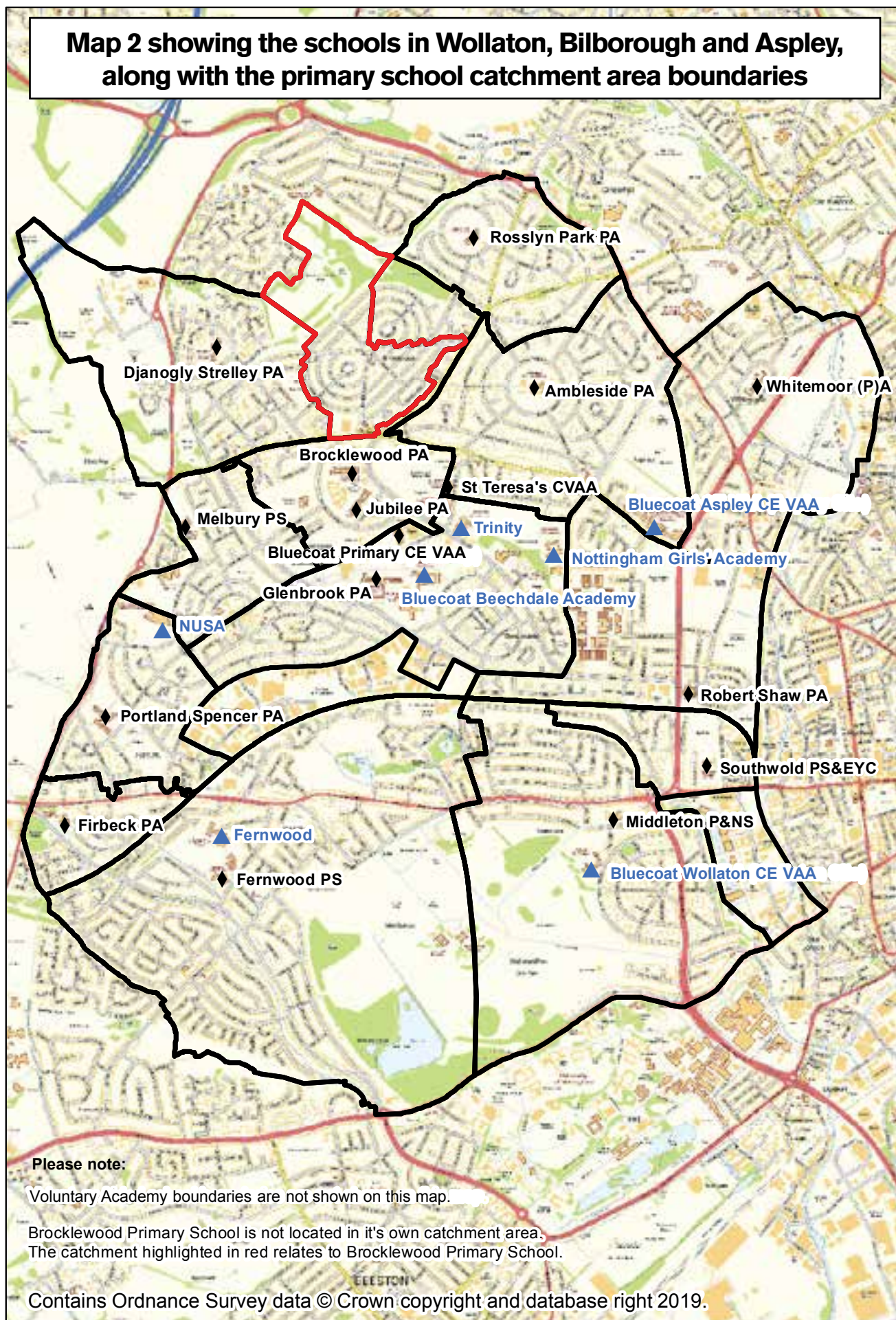
School name and address	Contact details	Head Teacher	Age range	Estimated number on roll - Sept 2019	Published admission number	Total number of preferences received for reception year by closing date	Over subscribed at closing date last year? See pages 21 to 22 for details	Type of School	Admission criteria	Map reference
St Margaret Clitherow Catholic Voluntary Academy (Parishes of the Divine Infant of Prague & the Good Shepherd) Mildenhall Crescent, Bestwood Park Nottingham NG5 5RS	0115 915 0296 admin@st-margaretclitherow.nottingham.sch.uk www.st-margaretclitherow.nottingham.sch.uk	Miss C Reilly & Miss S Sweeney	3 to 11	201	30	65	Yes	VA Academy	See Appendix 2	Map 5, page 62
St Mary's Catholic Voluntary Academy (Parishes of St Mary & St Paul) Beaconsfield Street Hyson Green Nottingham NG7 6FL	0115 915 1799 admin@smca.nottingham.sch.uk www.stmaryshysongreen.com	Miss L O'Sullivan	4 to 11	211	30	127	Yes	VA Academy	See Appendix 2	Map 3, page 60
St Patrick's Catholic Primary & Nursery Voluntary Academy (Parish of Our Lady & St Patrick) Coronation Avenue, Wilford Nottingham NG11 7AB	0115 915 2961 admin@st-patricks.nottingham.sch.uk www.st-patricks.nottingham.sch.uk	Ms T Lane	3 to 11	216	30	69	No	VA Academy	See Appendix 2	Map 1, page 58
St Teresa's Catholic Voluntary Academy Kingsbury Drive, Aspley Nottingham NG8 3EP	0115 915 5762 admin@st-teresas.nottingham.sch.uk www.stteresasprimaryschool.co.uk	Mrs A Glynne-Jones	4 to 11	421	60	210	Yes	VA Academy	See Appendix 2	Map 2, page 59
Stanstead Primary & Nursery Stanstead Avenue, Rise Park Nottingham NG5 5BL	0115 915 6300 admin@stanstead.nottingham.sch.uk www.stansteadprimary.co.uk	Mrs P Vladev	3 to 11	199	30	37	No	Academy	See Appendix 2	Map 5, page 62
Sycamore Academy Abbotsford Drive, St Ann's Nottingham NG3 4QP	0115 915 5804 admin@sycamoreacademy.co.uk www.sycamoreacademy.co.uk	Mr P Worley	3 to 11	401	60	89	No	Academy	See Appendix 2	Map 4, page 61
Victoria Primary Ainsworth Drive, The Meadows Nottingham NG2 1FX	0115 807 7750 office@victoriaprimarieschool.org.uk www.victoriaprimarieschool.org.uk	Mr Russell Gray	3 to 11	380	45	66	No	Academy	See Appendix 2	Map 7, page 64

School name and address	Contact details	Head Teacher	Age range	Estimated number on roll - Sept 2019	Published admission number	Total number of preferences received for reception year by closing date	Oversubscribed at closing date last year? See pages 21 to 22 for details	Type of School	Admission criteria	Map reference
Walter Halls Primary (Nursery attached) Querneby Road, Mapperley Nottingham NG3 5HS	0115 915 0045 admin@walterhalls.nottingham.sch.uk www.walterhallsprimary.co.uk	Emma Bearder	3 to 11	309	60	82	No	Community	See page 70	Map 4, page 61
Warren Primary Academy Bewcastle Road, Top Valley Nottingham NG5 9PJ	0115 915 3760 admin@warrenacademy.co.uk www.warrenacademy.co.uk	Miss J Tinsdeall	3 to 11	210	30	64	Yes	Academy	See Appendix 2	Map 5, page 62
Welbeck Primary & Nursery Kinglake Place, The Meadows Nottingham NG2 1NT	0115 915 3890 admin@welbeck.nottingham.sch.uk www.welbeck.nottingham.sch.uk	Mrs R Gittins	3 to 11	313	45	90	Yes	Community	See page 70	Map 7, page 64
Westglade Primary & Nursery Skye Road, Top Valley Nottingham NG5 9BG	0115 915 7515 admin@westglade.nottingham.sch.uk www.westgladeprimary.co.uk	Ms J Keely	3 to 11	264	30	61	No	Community	See page 70	Map 5, page 62
Whitegate Primary & Nursery Middlefell Way, Clifton Nottingham NG11 9JQ	0115 915 2944 admin@whitegate.nottingham.sch.uk www.whitegateprimary.co.uk	Mr L Noble	3 to 11	378	60	70	No	Academy	See Appendix 2	Map 1, page 58
Whitemoor Academy (Primary and Nursery) Bracknell Crescent, Whitemoor Nottingham NG8 5FF	0115 978 6351 admin@whitemoor.nottingham.sch.uk www.whitemooracademy.co.uk	Mrs L Di Martino	3 to 11	419	60	94	No	Academy	See Appendix 2	Map 2, page 59
William Booth Primary & Nursery Notitone Street, Sneinton Nottingham NG2 4QF	0115 915 5821 admin@williambooth.nottingham.sch.uk www.williambooth.nottingham.sch.uk	Mrs C Paparozzi	3 to 11	212	30	82	Yes	Academy	See Appendix 2	Map 7, page 64
Windmill L.E.A.D. Academy Sneinton Boulevard, Sneinton Nottingham NG2 4FZ	0115 915 0195 admin@windmillacademy.co.uk www.windmillacademy.co.uk	Theresa Shrestha (Acting Head)	3 to 11	420	60	92	No	Academy	See Appendix 2	Map 7, page 64

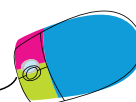
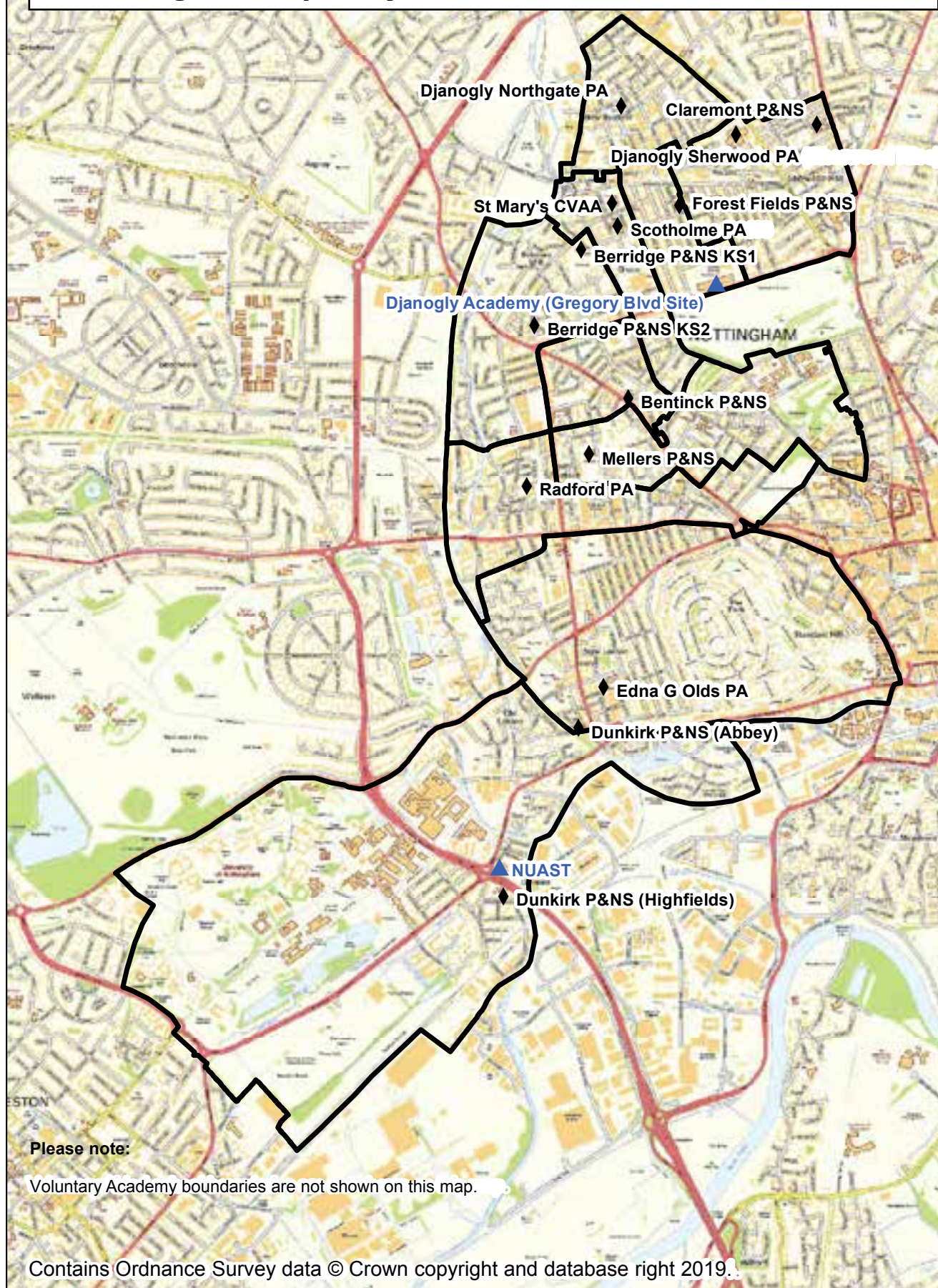
Map 1 showing the schools in Clifton and Wilford, along with the primary school catchment area boundaries



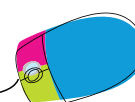
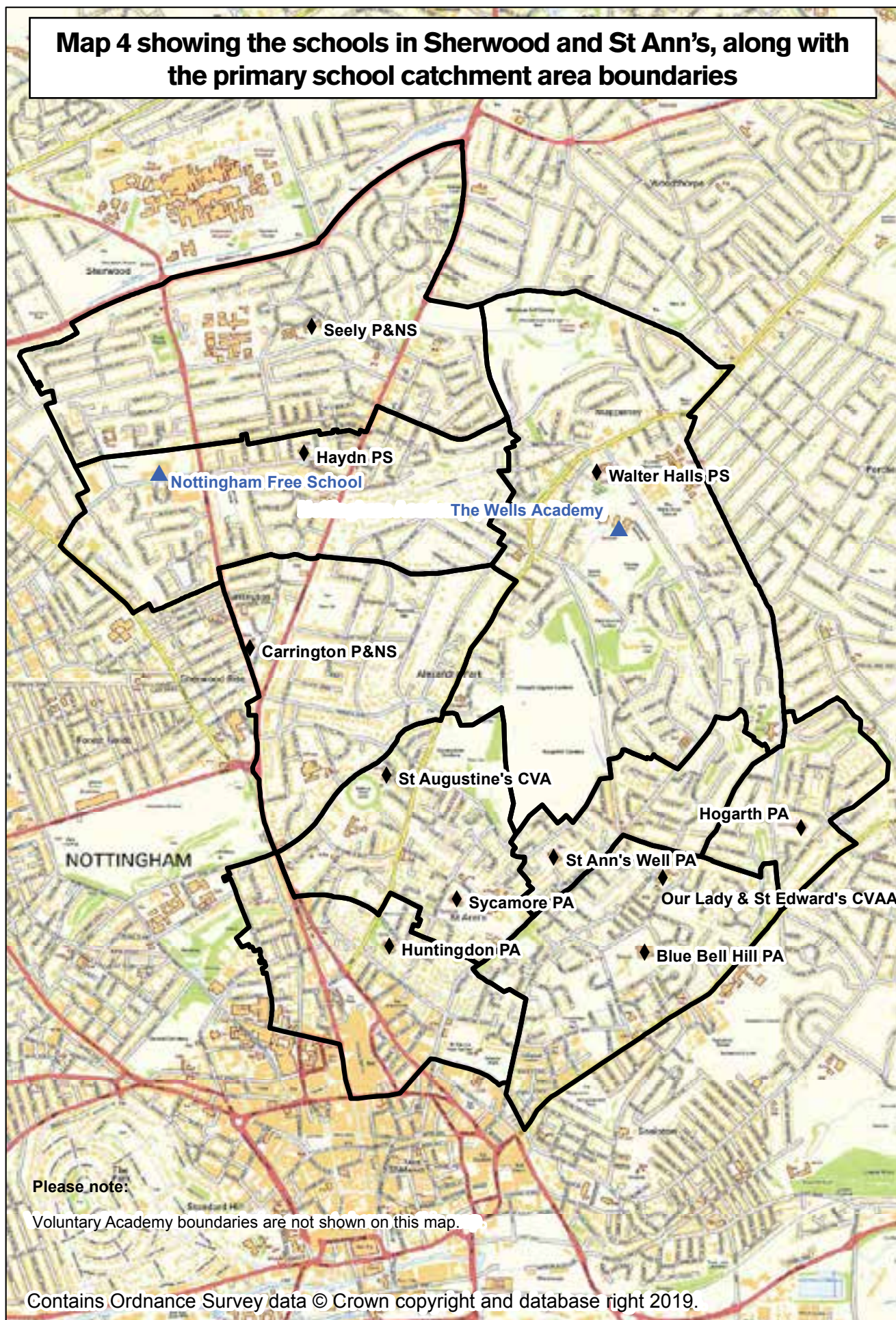
Map 2 showing the schools in Wollaton, Bilborough and Aspley, along with the primary school catchment area boundaries



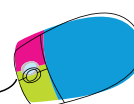
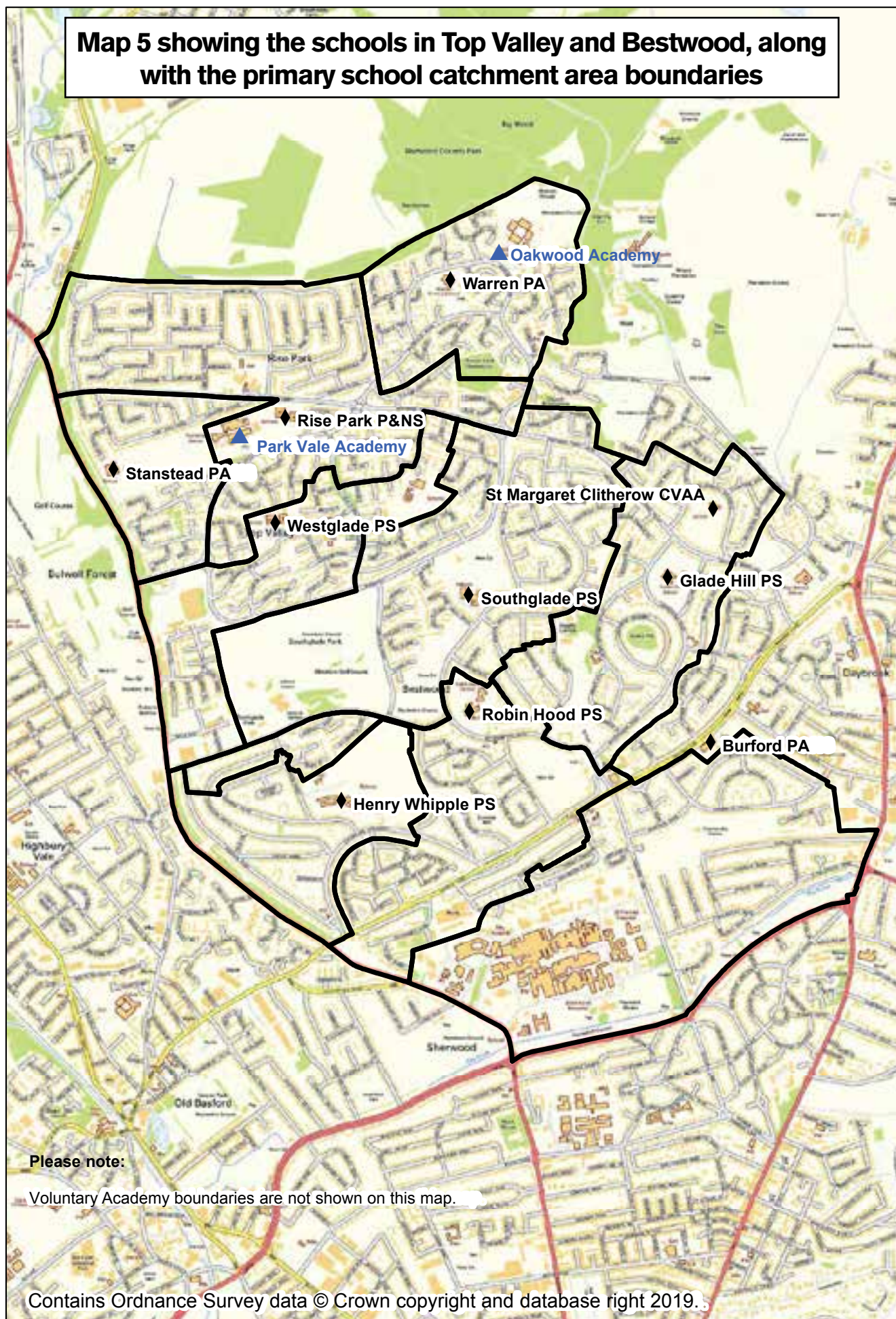
Map 3 showing the schools in Hyson Green, Radford and Dunkirk, along with the primary school catchment area boundaries



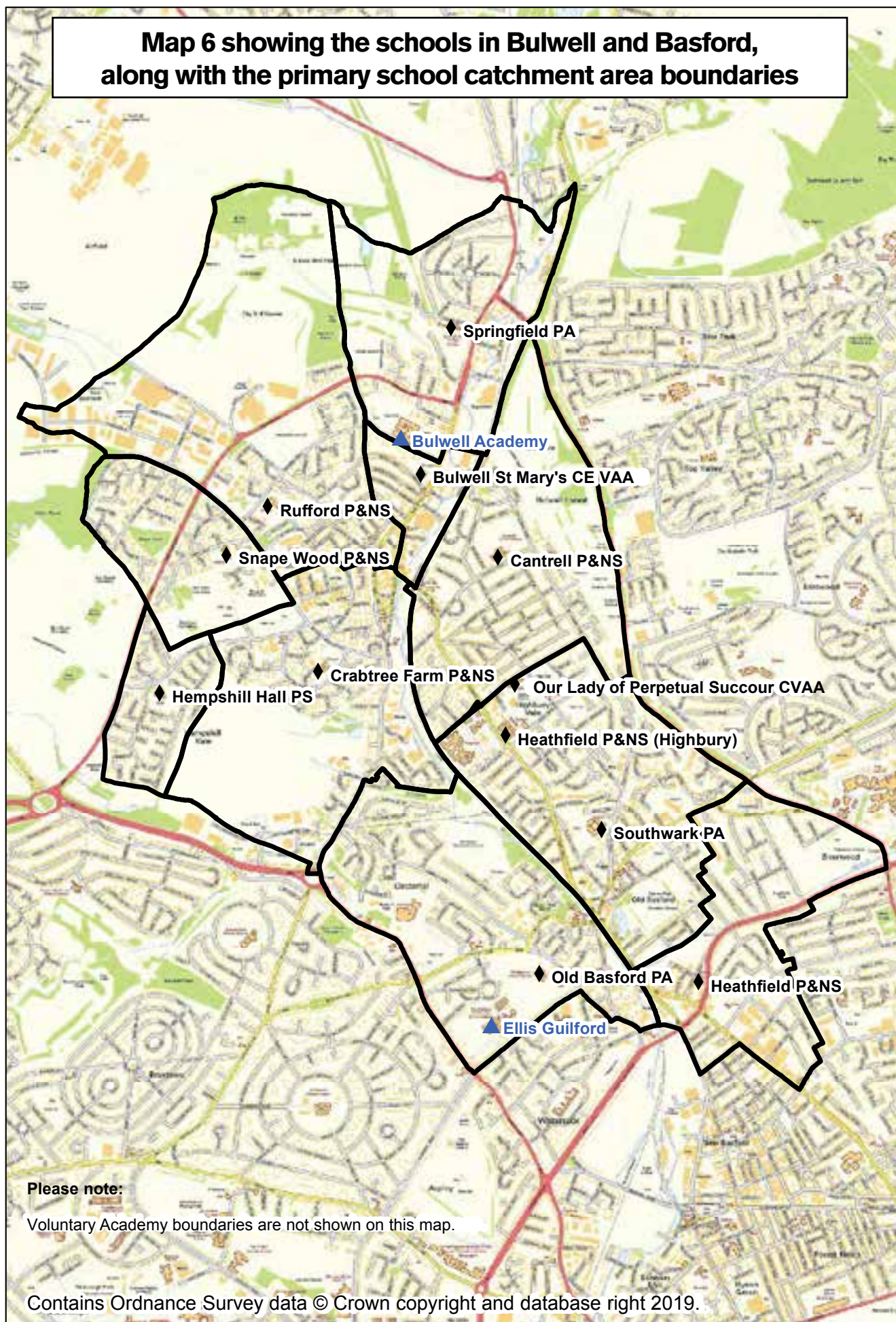
Map 4 showing the schools in Sherwood and St Ann's, along with the primary school catchment area boundaries



Map 5 showing the schools in Top Valley and Bestwood, along with the primary school catchment area boundaries



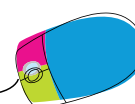
Map 6 showing the schools in Bulwell and Basford, along with the primary school catchment area boundaries



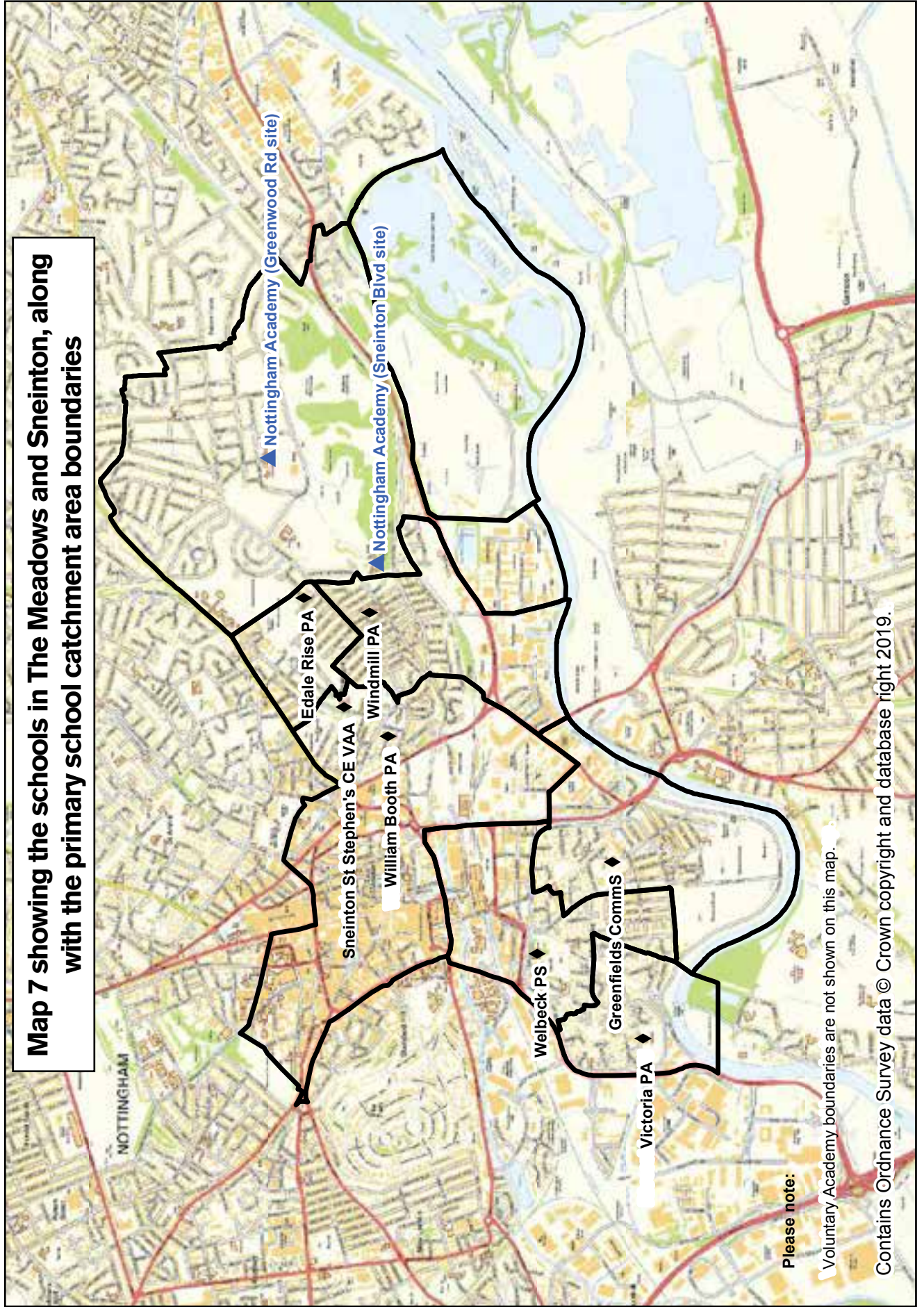
Please note:

Voluntary Academy boundaries are not shown on this map.

Contains Ordnance Survey data © Crown copyright and database right 2019.



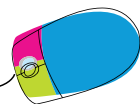
Map 7 showing the schools in The Meadows and Sneinton, along with the primary school catchment area boundaries



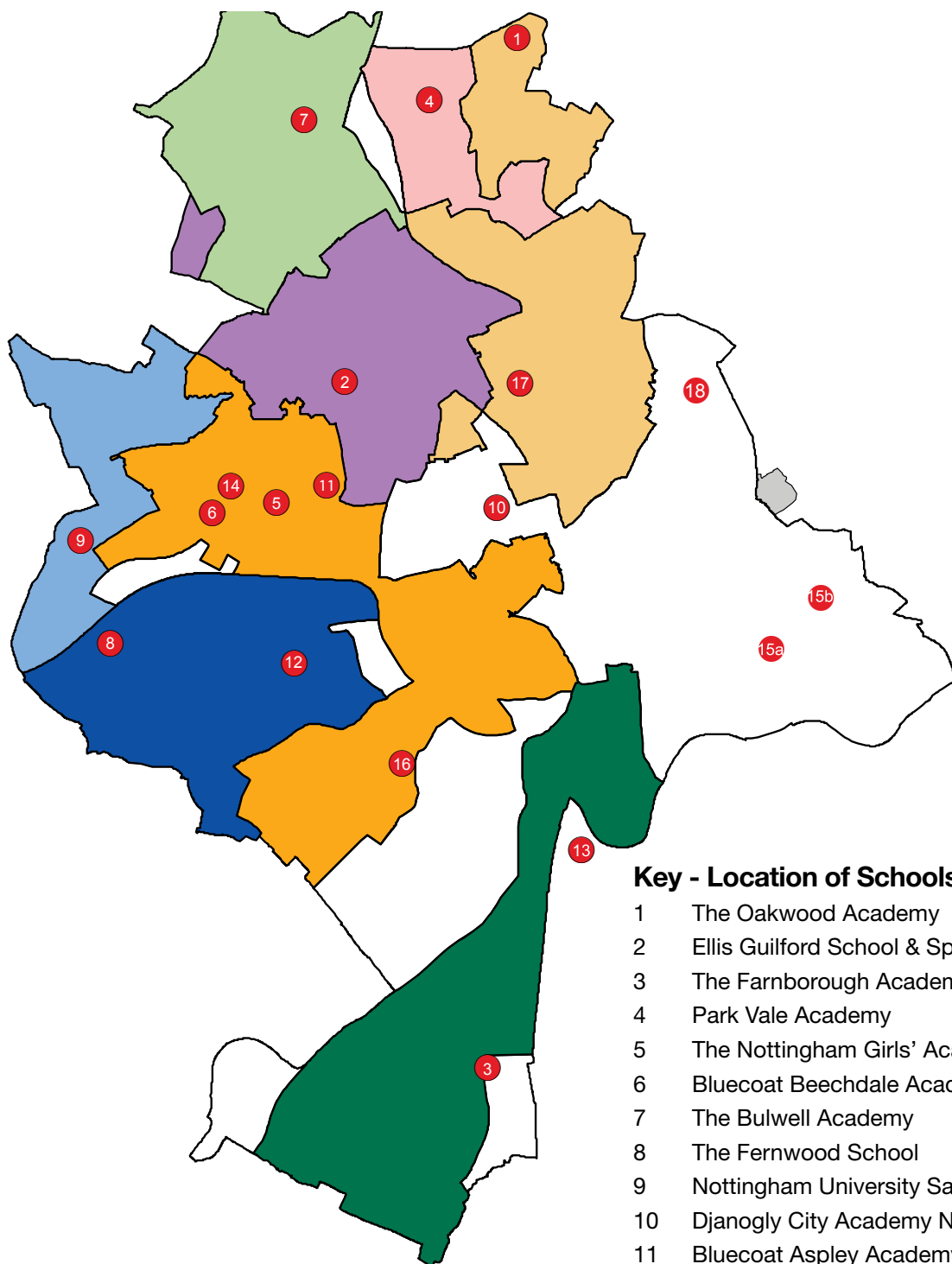
Please note:

Voluntary Academy boundaries are not shown on this map.

Contains Ordnance Survey data © Crown copyright and database right 2019.



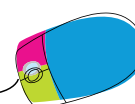
Map of secondary schools/academies in the Nottingham City area



Key - Location of Schools

- 1 The Oakwood Academy
- 2 Ellis Guilford School & Sports College
- 3 The Farnborough Academy
- 4 Park Vale Academy
- 5 The Nottingham Girls' Academy
- 6 Bluecoat Beechdale Academy
- 7 The Bulwell Academy
- 8 The Fernwood School
- 9 Nottingham University Samworth Academy
- 10 Djanogly City Academy Nottingham
- 11 Bluecoat Aspley Academy
- 12 Bluecoat Wollaton Academy
- 13 The Nottingham Emmanuel School
- 14 The Trinity Catholic School
- 15a Nottingham Academy
- 15b Nottingham Academy
- 16 Nottingham University Academy of Science & Technology
- 17 Nottingham Free School
- 18 The Wells Academy

Contains Ordnance Survey data
© Crown copyright and database right 2019



Directory of secondary schools/academies

School name and address	Contact details	Head Teacher/Principal	Age range	Estimated number on roll - Sept 2019	Published admission number	Total number of preferences received for year 7 by closing date	Oversubscribed at closing date last year? See page 23 for details	Type of School	Admission criteria
Bluecoat Aspley Academy Aspley Lane, Nottingham NG8 5GY	0115 929 7445 office@bluecoatasplesley.co.uk www.bluecoatasplesley.co.uk Admission enquiries: Miss K Peet admissions@bluecoatasplesley.co.uk	Mrs C Rowell	11 to 18	945	Yr 7 180 Yr 12 50	983	Yes	VA - Academy	See Appendix 1
Bluecoat Beechdale Academy Harvey Road, Bilborough, Nottingham NG8 3GP	0115 913 5211 office@bluecoatbeechdale.uk.com www.bluecoatbeechdale.uk.com Admission enquiries: Mrs Mehmood tmehmood@bluecoatbeechdale.uk.com Tel: 0115 913 5211	Mr Carl Elder	11 to 16	858	180	324	Yes	Academy	See Appendix 1
Bluecoat Wollaton Academy Sutton Passeys Crescent, Wollaton, Nottingham NG8 1EA	0115 900 7210 office@bluecoatwollaton.co.uk www.bluecoatwollaton.co.uk Admission enquiries: Miss K Peet admissions@bluecoatwollaton.co.uk	Mr S Anderson	11 to 16	760	150	692	Yes	VA - Academy	See Appendix 1
The Bulwell Academy Squires Avenue, Bulwell, Nottingham NG6 8HG	0115 964 7640 info@bulwellacademy.co.uk www.bulwellacademy.co.uk Admission enquiries: Caroline Wallis caroline.wallis@bulwellacademy.co.uk	Mrs Michelle Strong	11 to 19	924	210	336	Yes	Academy	See Appendix 1
Djanogly City Academy Gregory Boulevard, Hyson Green, Nottingham NG7 6ND Year 7 Campus Sherwood Rise, Nottingham NG7 7AR	0115 942 4422 contactus@djanogly.notts.sch.uk www.djanogly.notts.sch.uk Admission enquiries: Anisa Ali or Kaya Wragg (Yr 7): DCAGB@reception@djanogly.notts.sch.uk	Mr A Smith	11 to 16	709	Yr 7 210	240	No	Academy	See Appendix 1
Ellis Guilford School & Sports College Bar Lane, Old Basford, Nottingham NG6 0HT	0115 913 1338 enquiries@ellisguilfordschool.org.uk www.ellisguilfordschool.co.uk Admission enquiries: Mrs L Kirkham l.kirkham@ellisguilford.nottingham.sch.uk	Mr D Powell	11 to 16	1348	270	424	No	Academy	See page 71
The Farnborough Academy Farnborough Road, Clifton, Nottingham NG11 8JW	0115 974 4444 ext 107 admindept@thefarnboroughacademy.com www.thefarnboroughacademy.co.uk Admission enquiries: j.collins@thefarnboroughacademy.com	Mr M Jobling	11 to 16	700	210	181	No	Academy	See Appendix 1

School name and address	Contact details	Head Teacher/ Principal	Age range	Estimated number on roll - Sept 2019	Published admission number	Total number of preferences received for year 7 by closing date	Oversubscribed at closing date last year? See page 23 for details	Type of School	Admission criteria
The Fernwood School Goodwood Road, Wollaton, Nottingham NG8 2FT	0115 928 6326 admin@fernwoodschool.org.uk www.fernwoodschool.org.uk Admission enquiries: Mrs A Hopkinson admissions@fernwoodschool.org.uk	Mr P Burke	11 to 16	1030	300	539	Yes	Academy	See Appendix 1
Nottingham Academy Greenwood Road, Bakersfield, Nottingham NG3 7EB Sneinton Boulevard, Nottingham NG2 4GL	0115 748 3380 / 0115 748 3390 www.nottinghamacademy.org Admission enquiries: Mrs T Bieeu adming@nottinghamacademy.org	Mr G Rae	3 to 19	1300	Yr 7 390 Yr 12 20	391	No	Academy	See Appendix 1
The Nottingham Emmanuel School Gresham Park Road, West Bridgford, Nottingham NG2 7YF	0115 977 5380 admin@emmanuel.nottingham.sch.uk www.emmanuel.nottingham.sch.uk Admission enquiries: Mrs Laura Gray lgray@emmanuel.nottingham.sch.uk	Mr Derek Hobbs	11 to 19	970	Yr 7 180 Yr 12 100	488	Yes	VA - Academy	See Appendix 1
Nottingham Free School The Courtaulds Building, 290 Haydn Road, Sherwood, Nottingham NG5 1EB	0115 896 4949 contact@nottinghamfreeschool.co.uk www.nottinghamfreeschool.co.uk Admission enquiries: Ms J Dunthorne & Ms J Nailer (see 'contact' email address above)	Mrs Jenny Brown	11 to 15 for 2019/20	600	115	446	Yes	Free School	See Appendix 1
Nottingham Girls' Academy Robin's Wood Road, Aspley, Nottingham NG8 3LD	0115 748 3410 admin@nottinghamgirlsacademy.org www.nottinghamgirlsacademy.org Admission enquiries: Hazel Thornton	Mr D Tungate	11 to 19	742	Yr 7 150 Yr 12 20	317	Yes	Academy	See Appendix 1
Nottingham University Academy of Science & Technology 93 Abbey Street, Dunkirk, Nottingham NG7 2PL	0115 859 2040 www.nuast.org.uk Admission enquiries: Natalie Astle admissions@nuast.org	Mr Robert White	11 to 19	480	Yr 7 120 Yr 10 120 Yr 12 50	Year 7 490 Year 10 88	Year 7 Yes Year 10 No	Academy	See Appendix 1

School name and address	Contact details	Head Teacher/ Principal	Age range	Estimated number on roll - Sept 2019	Published admission number	Total number of preferences received for year 7 by closing date	Oversubscribed at closing date last year? See page 23 for details	Type of School	Admission criteria
Nottingham University Samworth Academy Bramhall Road, Bilborough, Nottingham NG8 4HY	0115 929 1492 info@nusa.org.uk www.nusa.org.uk Admission enquiries: Stephen Schmidt (s.schmidt@nusa.org.uk)	Mr Mark Trimmingham	11 to 19	750	Yr 7 150 Yr 12 20	204	No	Academy	See Appendix 1
The Oakwood Academy Bewcastle Road, Warren Hill, Nottingham NG5 9PJ	0115 953 9323 Admission enquiries: Mrs S Wright s.wright@oakwoodacademy.org.uk	Mr M Hardy	11 to 16	730	150	324	Yes	Academy	See Appendix 1
Park Vale Academy (formerly Top Valley Academy) Top Valley Drive, Top Valley, Nottingham NG5 9AZ	0115 822 1244 www.parkvaleacademy.org.uk Admission enquiries: admin@parkvaleacademy.org.uk	Mr Steve Bowhay	11 to 16	800	Yr 180	286	No	Academy	See Appendix 1
The Trinity Catholic School Beechdale Road, Aspley, Nottingham NG8 3EZ	0115 929 6251/2 office@trinity.nottingham.sch.uk www.trinity.nottingham.sch.uk Admission enquiries: Mrs K Newham	Mr M Shenton	11 to 18	940	Yr 7 165 Yr 12 40	616	Yes	VA -Academy	See Appendix 1
The Wells Academy Ransom Road, Nottingham NG3 5LR	0115 748 3390 adminr@nottinghamacademy.org	Mr M Shepherd	11 to 16	680	180	N/A	N/A	Academy	See Appendix 1

Admissions criteria

Community schools

The following arrangements apply to all community schools listed on pages 48 to 57.

If a school is oversubscribed (there are more applications than there are places available) and applicants are equal in terms of which criteria they meet, we will offer places to the children who live closest to the school first. This is measured by a computerised geographical information system in a straight line (as the crow flies) from a point on the school site to a point at the pupil's home.

Where two or more pupils are equal in all respects and it is not possible to differentiate between them, we will draw lots to decide who to offer places to (this will be supervised by someone independent of us).

For children who have a Statement of Special Educational Need or an Education, Health and Care (EHC) Plan, we will always offer a place at the school that is named in the child's statement or EHC Plan. This will reduce the number of places available for other children.

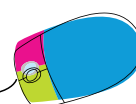
Brothers or sisters – sibling connection

- 1 For admission purposes, we consider a sibling connection to relate to any of the following:
 - A brother or sister (who share both parents)
 - A half-brother or half-sister (where two children share one parent)
 - A stepbrother or stepsister (where two children are related by a parent's marriage or civil partnership)
 - Adopted or fostered children or children living in the same household under the terms of a child arrangements or special guardianship order.

- 2 We do not consider a sibling connection to relate to any of the following:
 - Cousins or other family relationships not included in 1 above
 - Brothers and sisters who will not be registered pupils at the preferred school on 1 September 2019
 - Brothers and sisters on roll in the nursery attached to the school.

Other admissions authorities may use different definitions of a sibling connection.

If we receive applications for twins, triplets and so on, we will try to offer places in the same school, even if this means that a school would have more than the planned admission number. If this is not possible, we will ask you which child (or children) you would like the place (or places) for. You will still have the right to appeal against our decision to refuse one (or more) of your children a place.



Community primary schools

We use the admissions criteria set out below to offer places at Nottingham city community primary schools. There are details of these schools on pages 48 to 57 of this booklet.

- 1 We will first offer places to pupils Looked After by the local authority or a child who was previously Looked After but immediately after being Looked After became subject to an adoption, child arrangements, or special guardianship order. A Looked After child is a child who is (a) in the care of a local authority, or (b) being provided with accommodation by a local authority in the exercise of their social services functions in accordance with section 22(1) of the Children Act 1989 at the time of making an application to a school. An adoption order is an order under the Adoption Act 1976 (see section 12 adoption orders) and children who were adopted under the Adoption and Children's Act 2002 (see section 46 adoption orders). A 'child arrangements order' is an order settling the arrangements to be made as to the person

with whom the child is to live under section 8 of the Children Act 1989 as amended by section 12 of the Children and Families Act 2014.

Section 14A of the Children Act 1989 defines a 'special guardianship order' as an order appointing one or more individuals to be a child's special guardian (or special guardians).

- 2 We will then offer places to children who, at the closing date for applications, **live within the catchment area****, whose parents have requested a place at the school and who have a sibling already attending the school and whom is expected still to be on roll at the proposed date of admission of the applicant sibling.
- 3 We will then offer places to other pupils who, at the closing date for applications, **live within the catchment area**** and whose parents have requested a place at the school.
- 4 We will then offer places to children who **live outside the catchment area**, whose parents have requested a place at the school and who, at the closing date for applications, have a sibling already attending the school and whom

is expected still to be on roll at the proposed date of admission of the applicant sibling.

- 5 We will then offer places to other pupils who **live outside the catchment area** whose parents have requested a place at the school.

We may decide to override numbers 2 to 5 of the above criteria and give priority to a child who:

- has special educational needs that can only be met at a specific school (for example, where the school has specialist provision)*; or
- has medical, mobility or social needs that can only be met at a specific school (for example, because their family are travellers).*

*Applications in the two categories above must be supported by a written statement from a doctor, social worker or other relevant professional. This is necessary because you will be asking us to assess your child as having a stronger case than other children. Each case will be considered on its merits by Nottingham City Council.

**This relates to those pupils living in the catchment area for the school agreed for the 2020/2021 school year.

Please remember that going to a school's nursery does not guarantee your child a place at the main primary school. If the school has more applications than places available, we will follow the admissions criteria set out on this page.

Nottingham City Behaviour Charter



We want every Nottingham city child to get a good education. We know that this depends on pupils experiencing great teaching, behaving well at school and having a positive attitude to learning.

Nottingham City Council is keen to support this good work through the Behaviour Charter.

We believe that poor behaviour can only be improved by working together – with schools, students and parents all recognising that we each have a part to play in achieving great student behaviour in all of our schools.

What we mean by poor behaviour

Poor behaviour takes the form of students disrupting lessons and breaking the school rules. Poorly behaved students can intimidate other young people and disrupt their lessons in a way that disturbs the learning of other students in the classroom.

Schools and academies already have strong policies on behaviour, policies that the vast majority of staff, students and parents use and stick to. Teachers also put a lot of work into ensuring that lessons are interesting and engage students with the right level of stimulation and challenge.





The school's pledge to you

- To effectively engage pupils in a rich and varied curriculum
- To be committed to and have high expectations of pupils' learning
- To promote good behaviour including tolerance, respect and consideration for others
- To consistently apply the behaviour standards set out in the school Behaviour Policy
- To keep students safe and work collectively to prevent all forms of bullying amongst students
- To provide parents with regular updates on the progress their children are making
- To give parents access to a full range of school policies, including the Behaviour Policy, via the school website
- To give the opportunity to have a say on future plans to promote best behaviour
- To allow parents to discuss and resolve any concerns relating to behaviour

Our expectations of pupils

- To come to school every day ready to learn
- To work to the best of their ability
- To understand and accept their school's behaviour policy by showing tolerance, respect and consideration for other students and staff

Your pledge as parents

- To encourage your children to value the opportunities that education in our city's schools provide
- To support the school's Behaviour Policy, in terms of rewards and sanctions
- To ensure that your children attend school every day, on time, ready to work on the challenges that learning should present
- To model behaviour that demonstrates tolerance, respect and consideration for students, staff and the school environment



Useful information and contacts

- **Nottingham City Council Children & Adults**
Loxley House
Station Street
Nottingham
NG2 3NG
Tel: Main switchboard 0115 915 5555
- **The School Admissions Team**
LH Box 14
Tel: 0115 841 5568
Email: schooladmissions@nottinghamcity.gov.uk
- **Special Educational Needs and Disabilities Team**
Tel: 0115 876 4300
Email: special.needs@nottinghamcity.gov.uk
- **Children & Families Information Service:**
Tel: Freephone 0800 458 4114
Email: fis@nottinghamcity.gov.uk
Website: www.nottinghamcity.gov.uk/fis
- **The School Transport Team**
Tel: 0115 876 5049
Email: transport.team@nottinghamcity.gov.uk
- **Education Welfare:**
Tel: 0115 876 2965
Email: EducationWelfareServices@nottinghamcity.gov.uk

To apply online and get general information about the school admissions application process visit www.nottinghamcity.gov.uk/schooladmissions

Choice Advisors

Choice Advice aims to help and support parents, carers and children to make the best and most realistic preference of school. The Choice Advice Service offers impartial, independent advice about schools as well as helping parents/carers to complete the admissions application form. Although

Choice Advisors can give advice, they do not make any decisions for parents/carers and they cannot guarantee a place at any school. Choice Advisors in Nottingham are based within the **Families Information Service**.

The service works across the city offering information, advice and help to parents and carers about a wide range of childcare and family support issues. **The Families Information Service is part of Nottingham City Council. For more information or to contact The Families Information Service, please call 0800 458 4114.**

Elective Home Education

In England, the law states that the responsibility for a child's education, whilst they are within the age of compulsory education (currently 5-16), rests with their parents. Nottingham City Council respects that some parents legally choose to educate their children outside school.

When parents decide to electively home educate, they take on any costs involved and provide resources themselves. Nottingham City Council does not provide tutors, work for children to do, or financial assistance.

We will, however, advise you on educational matters if requested and signpost you to universal services, e.g. Health and Futures. We also give information about finding other local home-educating families, for group activities and parent-to-parent informal support. **For more information contact:**

Tel: 0115 876 2965
Email: admin.educationwelfare@nottinghamcity.gov.uk

Appeals

If you have been refused a place for your child at a city community school and would like to appeal, contact the **School Admissions Team on 0115 841 5568**.

To check that your appeal form has been received and when the appeal will be held, contact:

School Appeals Team
LH Box 28
Loxley House
Station Street
Nottingham
NG2 3NG
Tel: 0115 876 4302
Email:

school.appeals@nottinghamcity.gov.uk

If you have been refused a place for your child at a non-community city school and would like to appeal, please contact the school/academy directly to check that your appeal form has been received and when the appeal hearing will be held.

Pupil Benefits

Information about meals, clothing or footwear:

Loxley House
Station Street
Nottingham
NG2 3NG
Tel: 0115 915 4084
Email:

pupil.benefits@nottinghamcity.gov.uk

A counter service is available Monday to Friday, 8.30am – 4.30pm (except Thursday 9.30am - 4.30pm). Staff will be pleased to help you.

Ask Us

(formerly Parent Partnership)

Information about education for children with special needs and disabilities:

Suite 5
Clarendon Chambers
32 Clarendon Street
Nottingham
NG1 5LN
Tel: 0115 804 1740
Email: enquiries@ppsnotts.org.uk
Website: www.ppsnotts.org.uk

Diocesan Education Service

Information about admission to Catholic schools:

The Diocesan Centre
Mornington Crescent
Mackworth
Derby
DE22 4BD
Tel: 01332 293 833
Website:
www.nottingham-diocesan-centre.org.uk

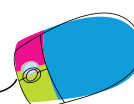
Southwell & Nottingham Diocesan

Information about admission to Church of England schools:

Board of Education
Jubilee House
8 Westgate
Southwell
Nottinghamshire
NG25 0JH
Tel: 01636 814 331
Email: reception@southwell.anglican.org
Website: www.southwell.anglican.org

Information on membership of Churches Together in England

Website: www.cte.org.uk



Information about schools in Nottinghamshire County

(outside the city boundary)

Applications for admission to these schools are considered by Nottinghamshire County Council.

If you wish to make a telephone application call 0300 500 8080. For other admissions enquiries, their contact details are:

Nottinghamshire County Council Admissions Group

Children and Young People's Services

School Admissions Team

Meadow House

Littleworth

Mansfield

Nottinghamshire

NG18 2TA

Tel: 0300 500 8080

Website: www.nottinghamshire.gov.uk

Department for Education

Information on school performance in city schools:

Email: online.publications@prolog.uk.com

Website: www.gov.uk/government/organisations/department-for-education

View the latest Ofsted report for schools

Website: <https://online.ofsted.gov.uk/OnlineOfsted/Default.aspx>

Search for schools/academies and their DfE number:

Website: <https://get-information-schools.service.gov.uk/>

The National Careers Service

Tel: 0800 100 900

Text: 07766 413 219

Website: <https://nationalcareersservice.direct.gov.uk>

CORAM

The Children's Legal Centre who provide free legal information, advice and representation to children, their families and carers on state education, including admissions appeals. You can contact them by calling 0845 345 4345, Mon-Fri 9.00am – 8.00pm or Saturday 9.00am-12.30pm or by visiting their website at

www.childrenslegalcentre.com

Futures (formerly Connexions)

For expert careers advice if you're:

- 16-18 and **NOT in education, employment or training**
- **18+ and unemployed**
- **looking for help** with choices, next steps, job hunting and exam results advice

Contact Futures at:

57 Maid Marian Way

Nottingham

NG1 6GE

Tel: 0115 960 1597

Website: www.futuresadvice.co.uk

Email: info@futuresadvice.co.uk

Nottingham & Nottinghamshire Refugee Forum

Tel: 0115 960 1230

Email: info@nottsrefugeeforum.org.uk

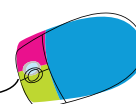
Website: www.nottsrefugeeforum.org.uk

Education and Skills Funding Agency (ESFA)

How to complain about an academy.

Website: www.gov.uk/government/organisations/education-funding-agency

Please see the schools' directory in this booklet for individual school's websites.



Checklist

Please read
the checklist
below before
you apply

This checklist sets out all the steps you need to take for your child to be offered a school place, whether they are starting school for the first time or changing from one school to another.

Priority for places in Nottingham city community schools is given to applicants who live in the school's catchment area (see the admission criteria on pages 69 to 70).

Our website provides full information on everything you need to know about applying for a school place. An interactive map shows the primary catchment school for your address along with other schools.

- Check which is the catchment school for your home address either online at www.nottinghamcity.gov.uk/schooladmissions or by telephone 0115 841 5568. ☐
- Find out about your catchment school and visit the school. ☐
- Request details of other schools and arrange a visit. ☐
- Read the admissions criteria in this booklet and in Appendices 1 and 2. This will help you decide whether your application will receive a high priority. ☐
- Check which schools were oversubscribed in 2019/2020 on pages 21 to 23. ☐
- Think about how your child will get to and from school. ☐
- Find out if you can get help with travel costs, see pages 18 to 20. ☐
- Apply online at www.nottinghamcity.gov.uk/e-admissions and remember to include details of any older brothers or sisters already at the school you name on your application form and the school(s) they attend. ☐
- Attach proof of address if required, see page 28. ☐
- Submit your online application or send your completed form by the closing date. ☐

School Admissions Team

Children & Adults, LH Box 14, Loxley House, Station Street, Nottingham, NG2 3NG

Tel: 0115 841 5568
Email: schooladmissions@nottinghamcity.gov.uk

The information contained is correct at the time of publication. Please do not assume that there will be no change to the information given for the 2020/21 school year or subsequent years.



Safe, clean, ambitious
Nottingham
A city we're all proud of